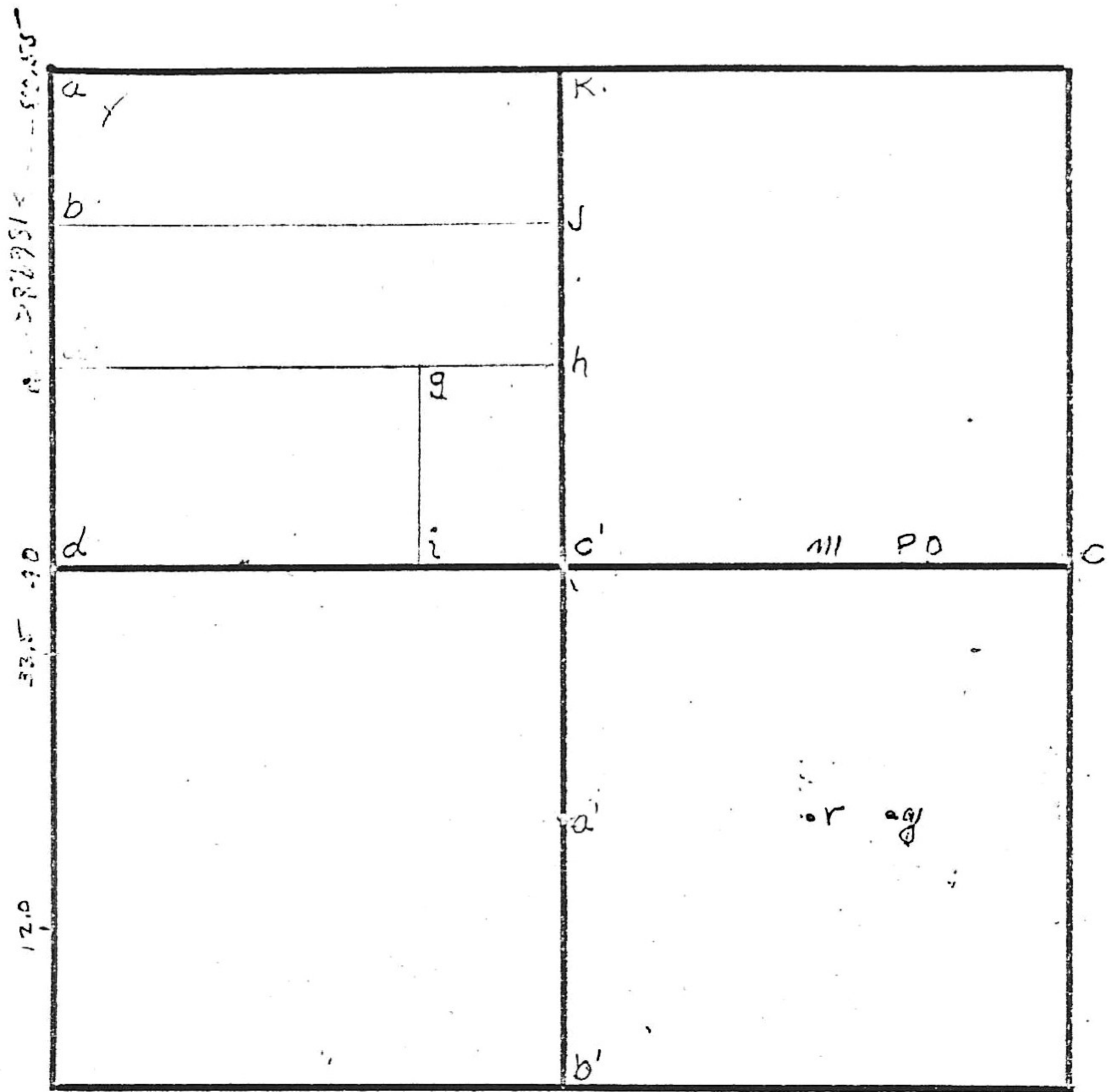
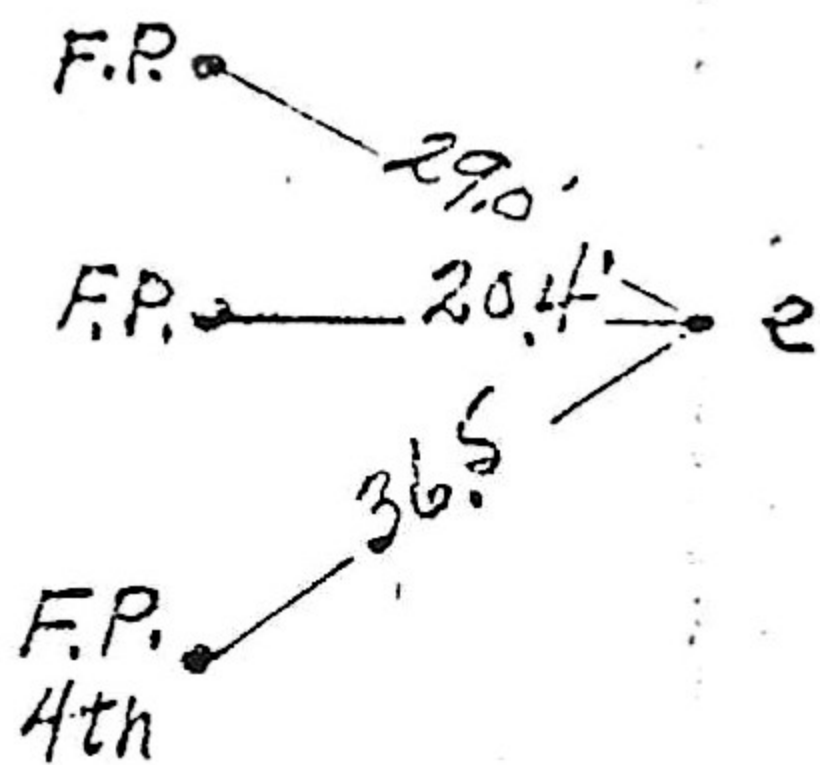
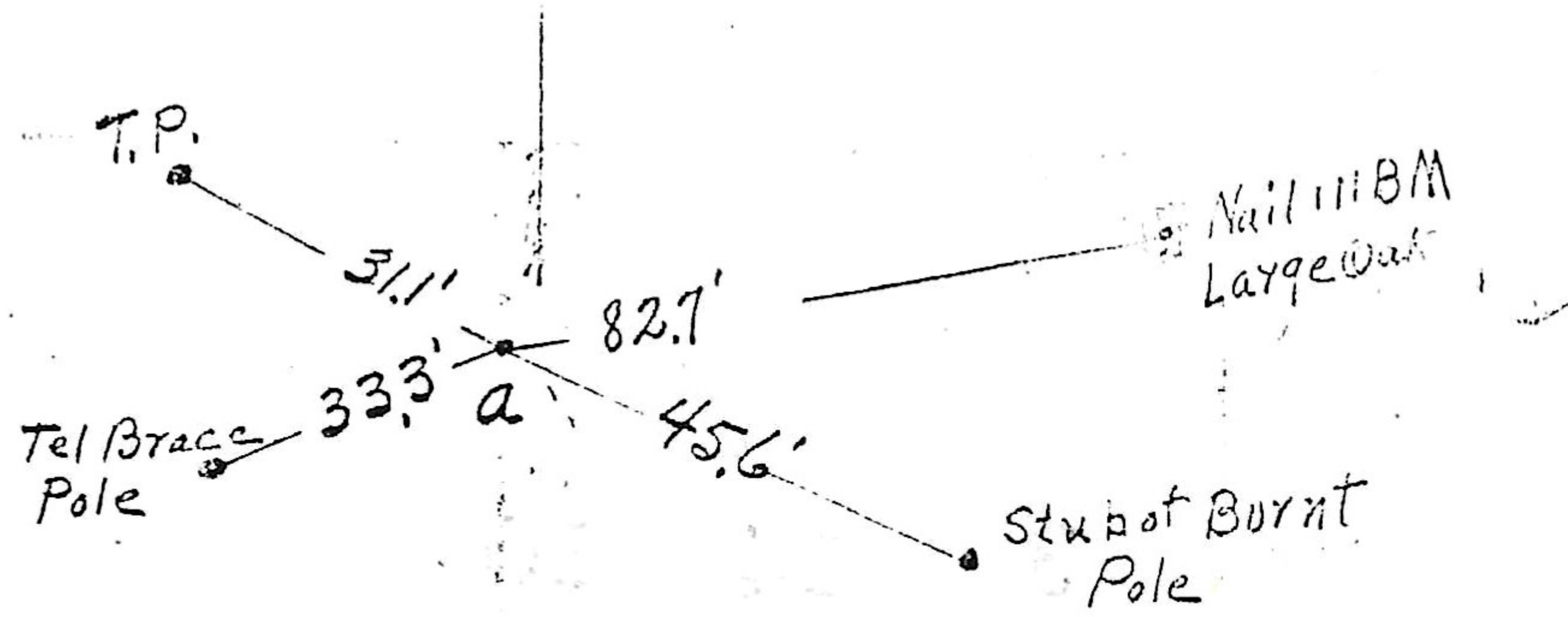


3 14 10

12-Creek 66E.
 335-Branch 41W.
 40- { W.Oak 12 S 66E 17.82
 " 14 N 32W 10.576
 82-55- { B.Oak 12 N 15E 19.6 INTERMOUNTAIN
 " 10 S 15W 27.06 17.16' W. of Cor



- a' - Stone { R.Oak 10° E 44.6' on hillside.
- b' - " { Willow 18° S 70° 30' W 61'
- c' - Old Stone.
- a - Stone - Orig BIK. Wal 20° S 15° W 41.1Ks.
- c' - " - { J. Oak 14" N 70 1/2 W 13.1Ks.
- d - " - { W. Oak 20" S 41 1/2 E 46 "
- " - { Orig PIN Oak N 32 W 16 "
- " - { S. Oak S 27 E 105 "
- c' - Stone { W. Oak 14 S 50 E 21 "
- " 22 N 12 E 45 1/2 "



Handwritten calculations:

$$\begin{array}{r} 28057 \\ 18704 \\ \hline 165935131564 \\ 11000 \\ \hline 1170 \end{array}$$

Survey by Geo Henderson 1877
 Note No Name
 Sec 21 Note No Name
 Survey by N B P Ross
 P-16
 Survey N B P - Franklin Bond