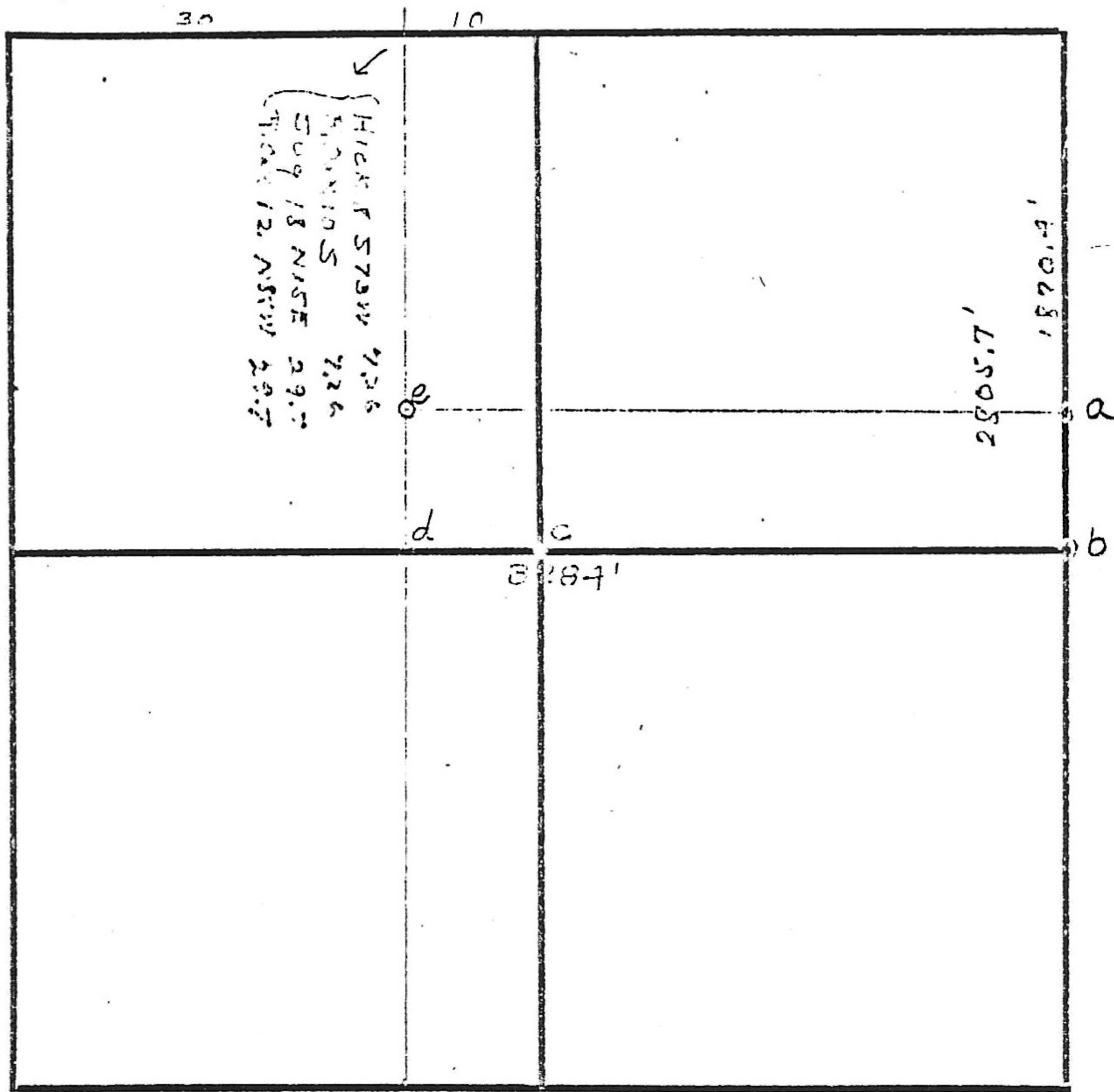


4 14 10



- a - Stone - { W. Oak 36" S 60° W 120.7' }
 { Broken glass under stone e.
- b - " { Hick. 12" N 89° 30' E 66' }
 { Cord in Sec 3.
- c - Stake. Elm 6" S 19° 30' E 5.3'
- d - " on ST LINE - Br Oak 20" S 40° E 20.4'
- e stone on hillside near creek { Elm 6" N 3° 30' W 24.5' }
 { Sug 12" S 55° 15' E 29.7 }
- f - Stake - Walnut 15" S 52° E 3'. - Push 1899