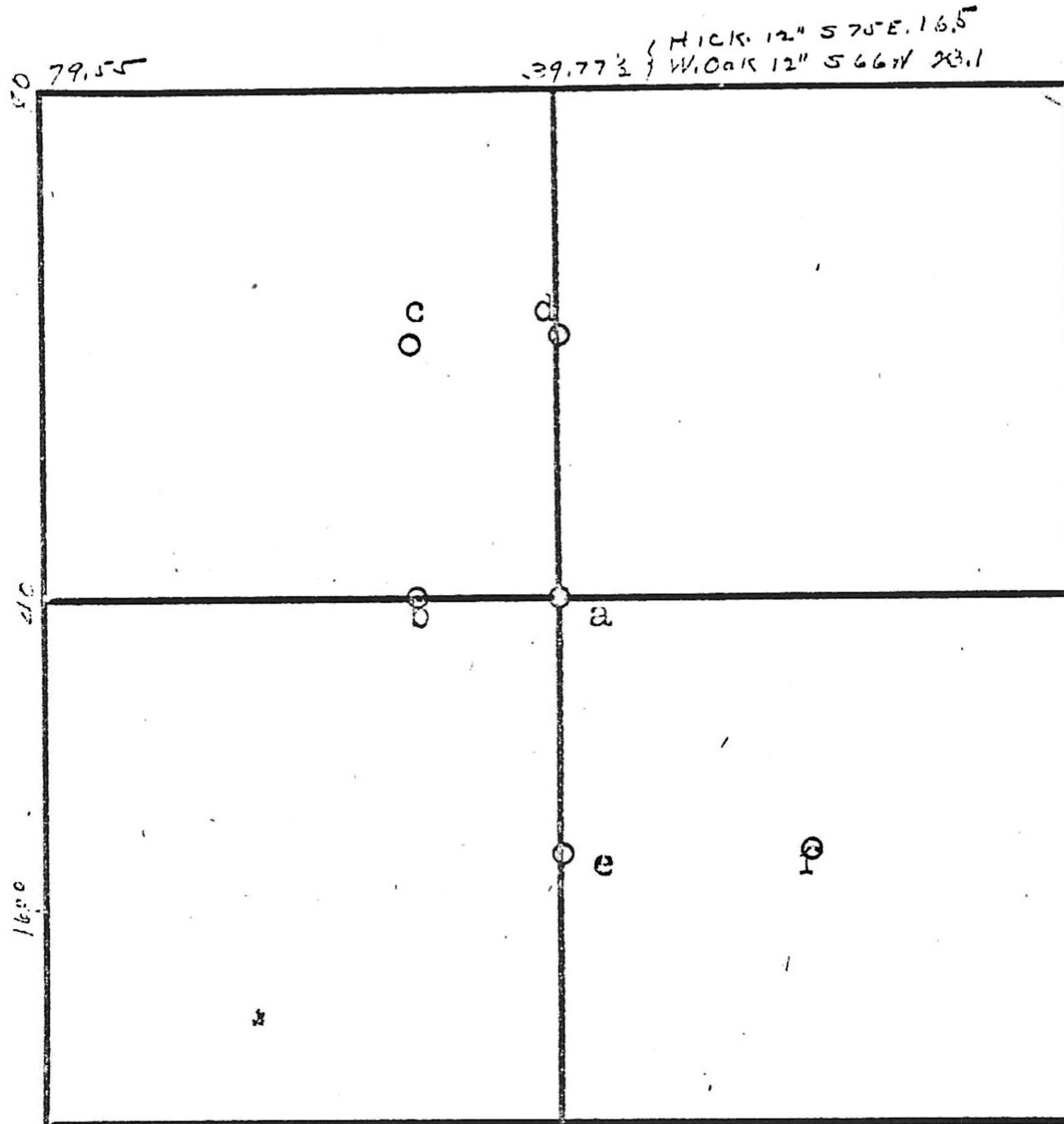


11 14 10

1/4 - Creek to SE.
 To - W. Oak 15" S84E 20.46
 B. " 12" S33W 25.88
 So - B. Oak 10 N15E 13.2
 " 12 S82W 38.28



- a - W. Oak 12" S41W 18.4'
- " 8" S80W 21.8'
- b - Stone
- c - " Sug. 10" N69W 52.3'
- d - Old stone agreed upon
- e - Stone "X" Red Oak 12" s81E 11.0'
- f - " " Hick 102 S20 1/2 W 23.1
 W. OAK 3" S62 1/2 E 11.3 1899

Mate, No Name 1899
Cleider E-23