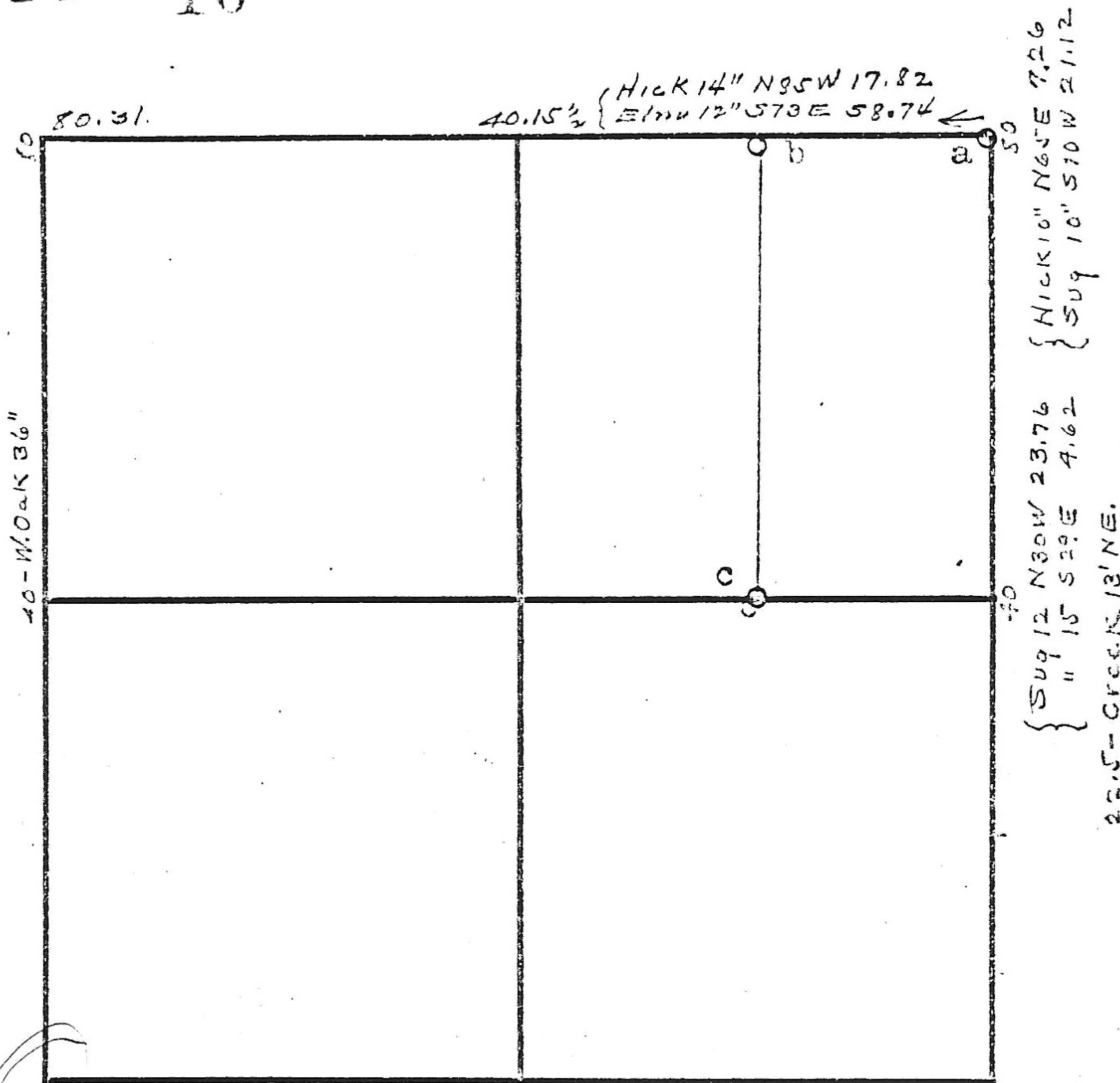


12 14 10

30 - { Elm 10" N 77° E 23.1
 { Hick 10" S 47° W 17.16



- a - Red-oak 10" n47W 31.68'
- Ash 7" N66E 37.62'
- b - Sassafras 6" S34W 9.24
- Red Oak 8" S57E 40.92
- c - W.Oak 24" S84E 11.88
- W.Oak 20" S82½W 33.0

March, 1860 Fleming by Siler

Swed by J. Demming 1860

P. 7

ABP. Wright? Bowley W-31