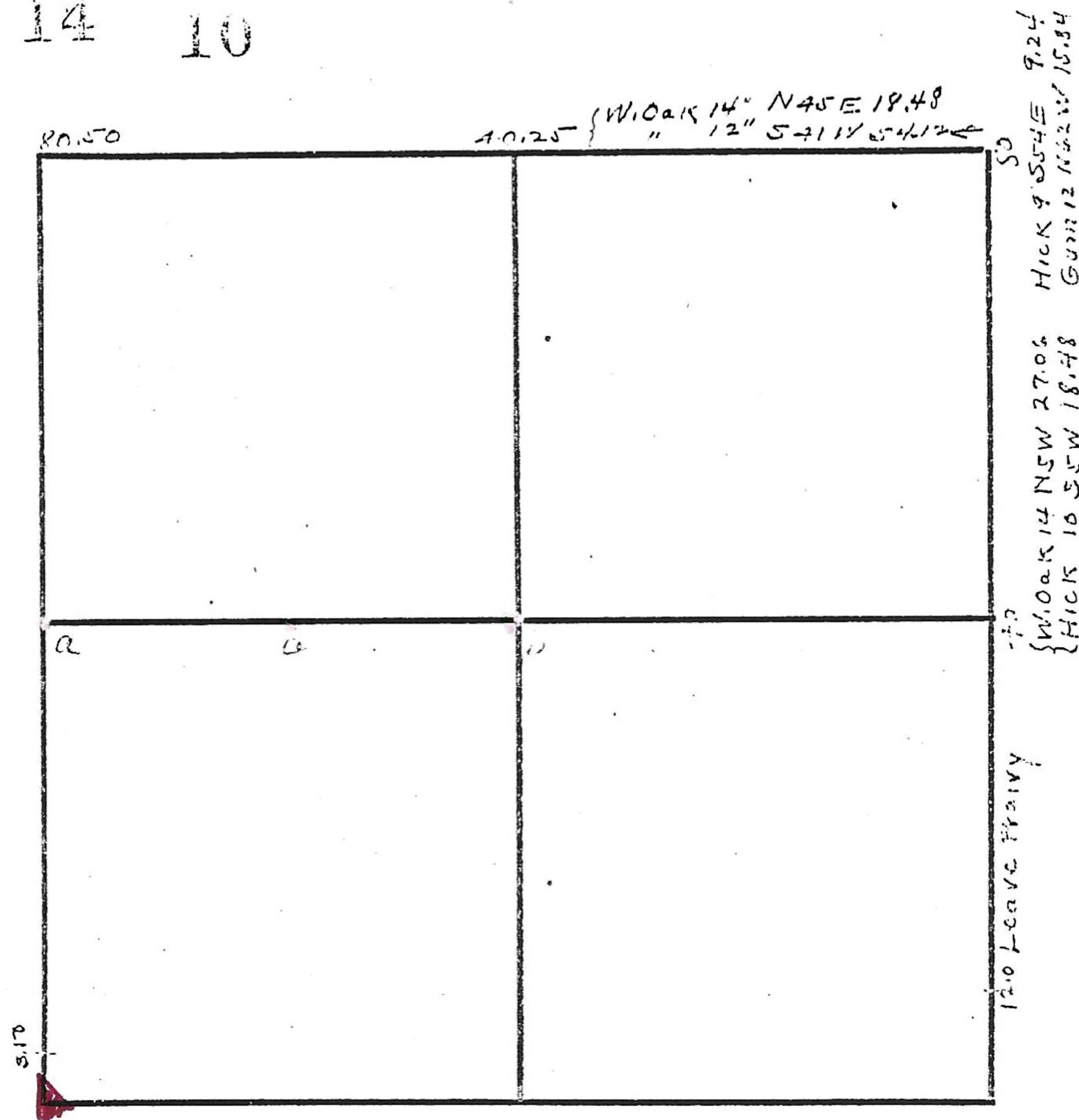


24 14 10

13

3.50 CROWN ST. E.
5.00 FRUIT
- 1.00 LEAVE

40- { 5' 10" S 55° W 24.42
" 12" N 75° E 23.1
80- { Hick 12" S 45° E 9.24
" 10" N 35° E 7.55



- a- Stone Black Wal. 8" N 5-10° W 8.73'
- White " 8" S 45° E 17.7'
- c Stone Blk Wal 5" S 22° 45' W 12.52'
- White Oak 12" N 77° 30' W 6.6'
- b Stone Hick 12" N 15° E 19.8'
- White Oak 10" S 56° 15' E 21.31'

July RAP 1895

" " "

" " N.S.P. -

F-8

H-22 W-37

" " " Road Brick

P. 7 P. 31

Carl Van Dyne FEL Bank E 27