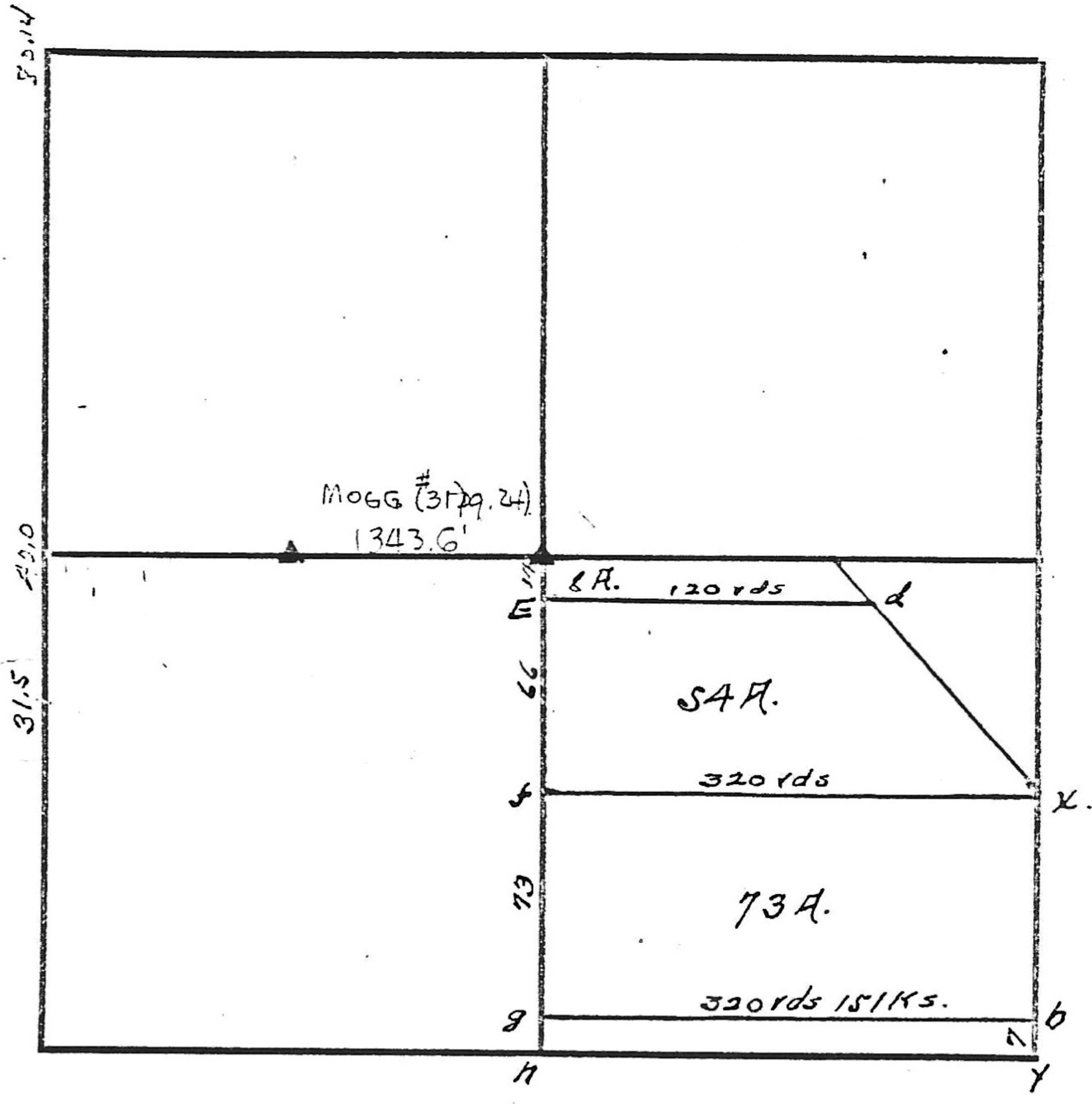


31.50 Brook. 7' S.E.
 40- { B.O.A.K 10" S 39 W. 8.578
 509 10' N 66 E 23.1
 8014- { W.O.A.K 14" S 39 E 15.18
 509 8" S 68 W 34.92
 INTER N. Bd. 45.54' W of Post.



Security M B Charles 1886 H
W-31 " " N B P for Baker VS Coal Co E 22 E 88
" " " " " " Division
" " " Paul _____

p-16

John Roberts E 105