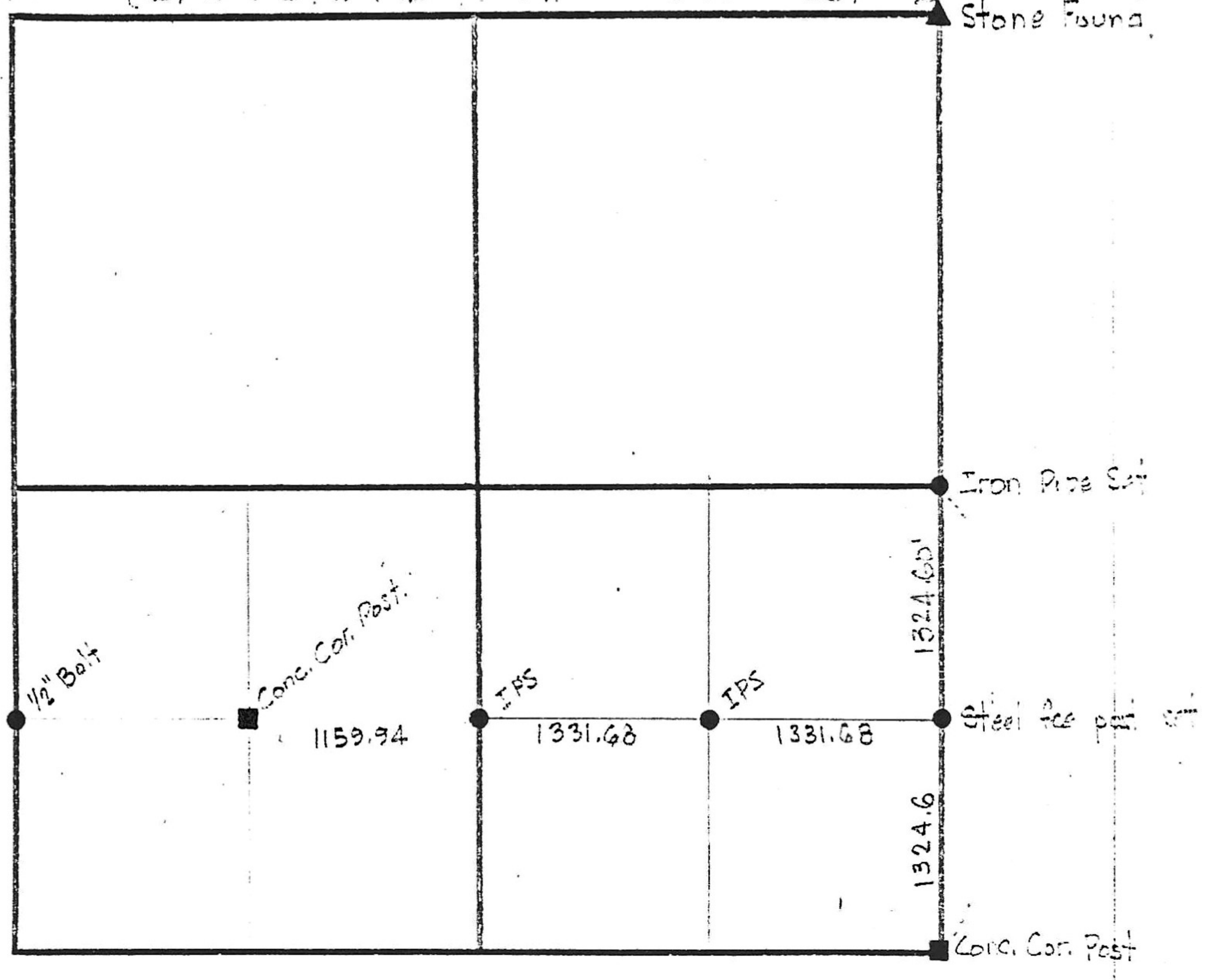


7-15-9

7

INTER W. Bd 49.5' S of Post.

19.27- { B. Oak 20" N 83 E 231 (S. Oak 20" N 75 W 36.3
Lyn 8" S 7 W 115 40-5 W " 20 N 83 E 231



NOTE - FOR INFORMATION ALL POINTS ARE PINS # 2, 4, 6

No record

MSP Clean and Laying Brick Co. E. 98