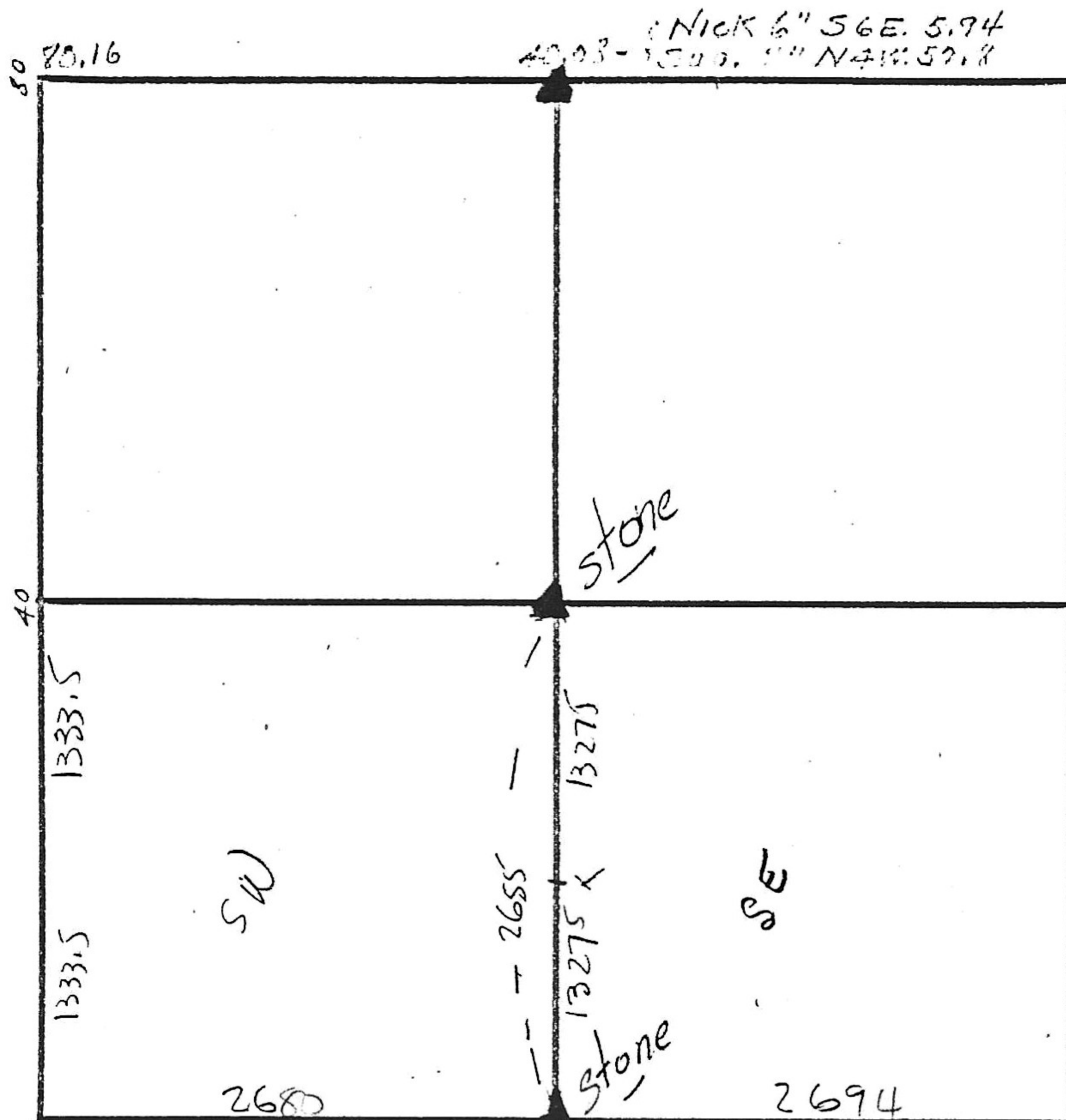


40- { W.C. Oak 12" S, 16.5'
 Lyn 12" N 7 E 33'
 80- { B. Oak 12" N 24 W 16.56
 " 24" S 27 E 40.92



Witness to Stone @ NE cor Sec 21 (C.H.H. Bendcheck & Truma) (No 29) (1945)
 20.94' NW. from Road nail in NE side of car pool So. Side Lane
 33.57 NE " " " " SE cor of R.R. Tie used for
 for post So. side lane.
 about 30' W. of E of gravel in st. and about North side Lane
 (Iron pin on Sec. line 825' W of NE cor.)

Stone No record
See NBP — Groves W-33