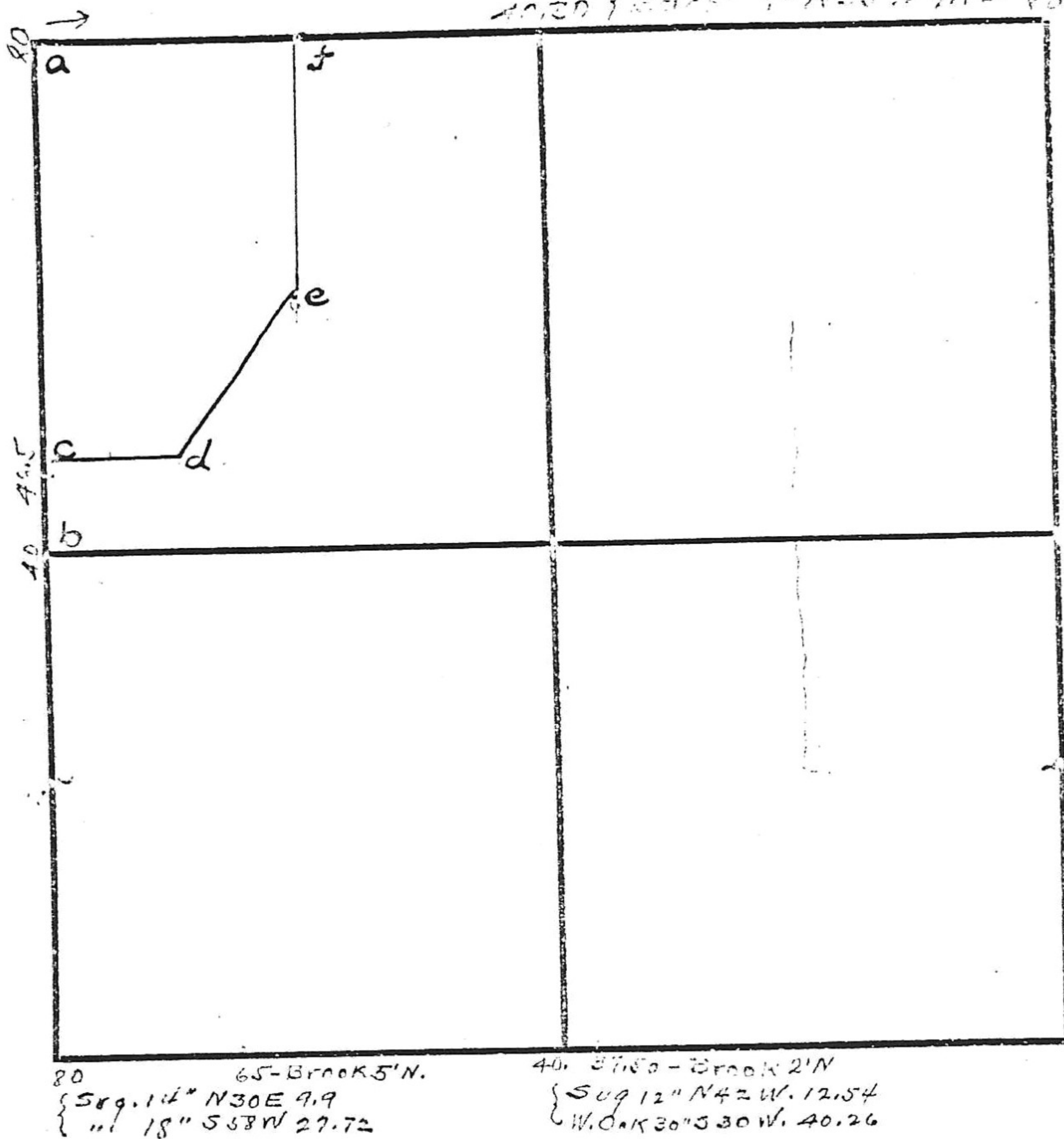


32-14-9

40.30 { W. Oak 10" S48E 72.6
 { Beech 7" N55W 71.2 80.60

46.5 Brook 7'E.
 40- { Iron Wood 7" S21E 13.2
 { W. Oak 7" N24W 21.12
 80- { Dog 8" S67E 9.24
 { Beech 14" N75W 23.1



- a - Stone "SC. 29, 30, 31, 32" Tr. Oak. East, 61.38'
- b - Stone "C. 32"
- c - Stone 29 N. Dog. 10" S21E 20.46'
- d - Stone "76E" Iron 30" S52W 109.56
- e - Stone 14576" Elm. 8" S72W. 76.4'
- f - Stone "70E" B.K. Wal. 12" N87E. 119.76'

40. 5750 - Brook 2'N
 40. 5750 - Brook 2'N

Sur by Fred Reed shown on 19-10-9 1878
" " " " " Aug 22-1898
" " " " " One Hudson Aug 27-1878