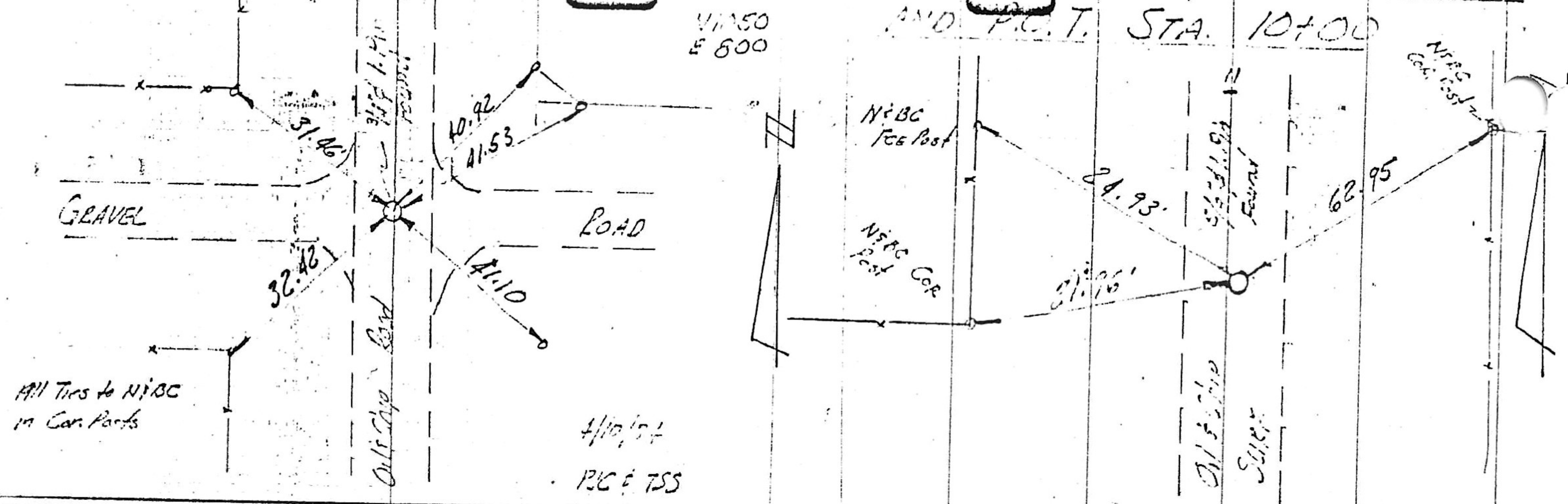
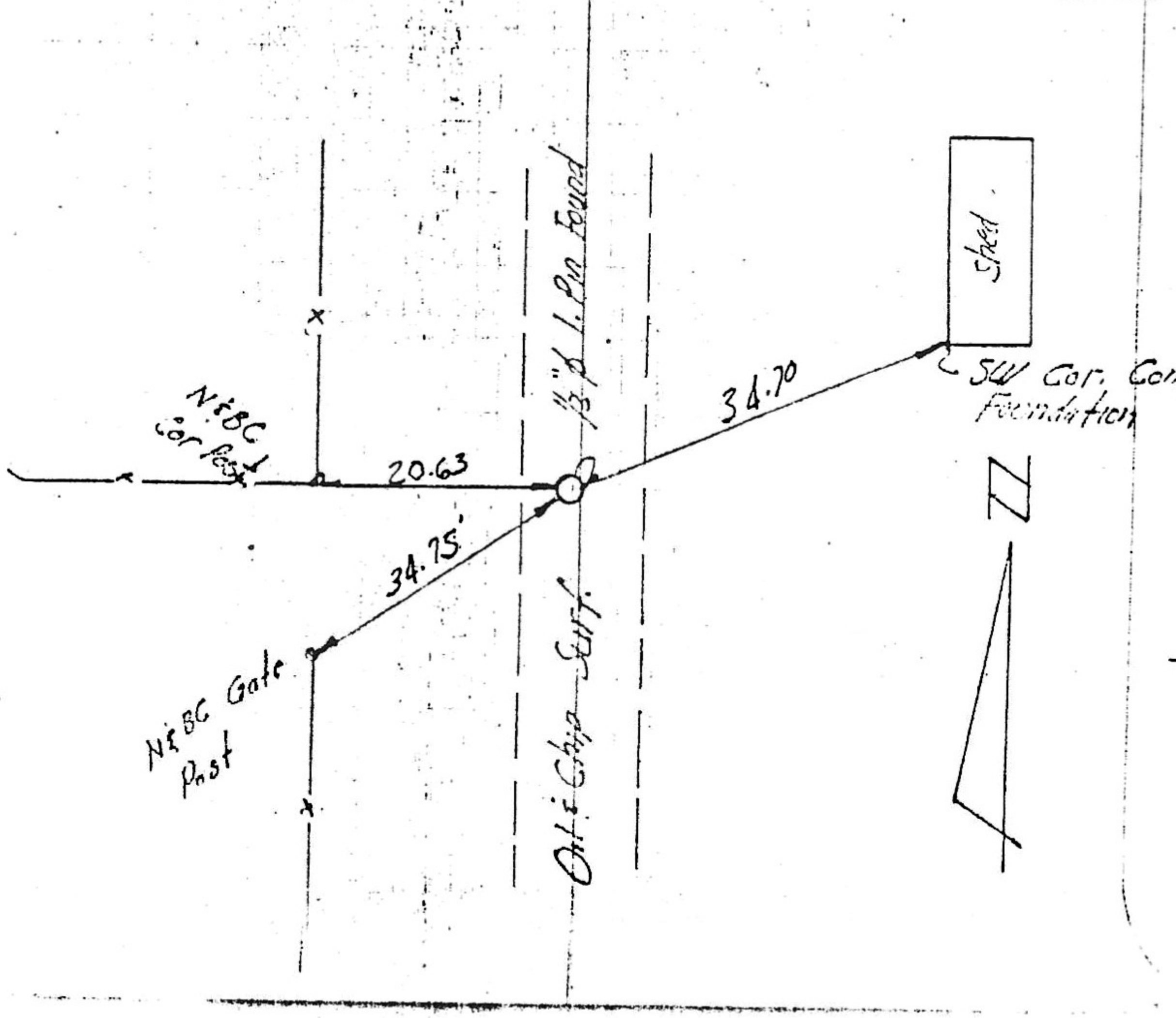


TIES SE COR NE 1/4 SEC. 8, T. 15N, R. 10W. 2ND TIES NE COR SE 1/4, NE 1/4, NE 1/4 SEC. 8, 15-10



TIES NE COR. SE 1/4 NE 1/4 SEC. 8, T. 15N, R. 10W. 2ND



TIES NE COR SEC. 8, T. 15N, R. 10W. 2ND AND P1 STA. 16+54

