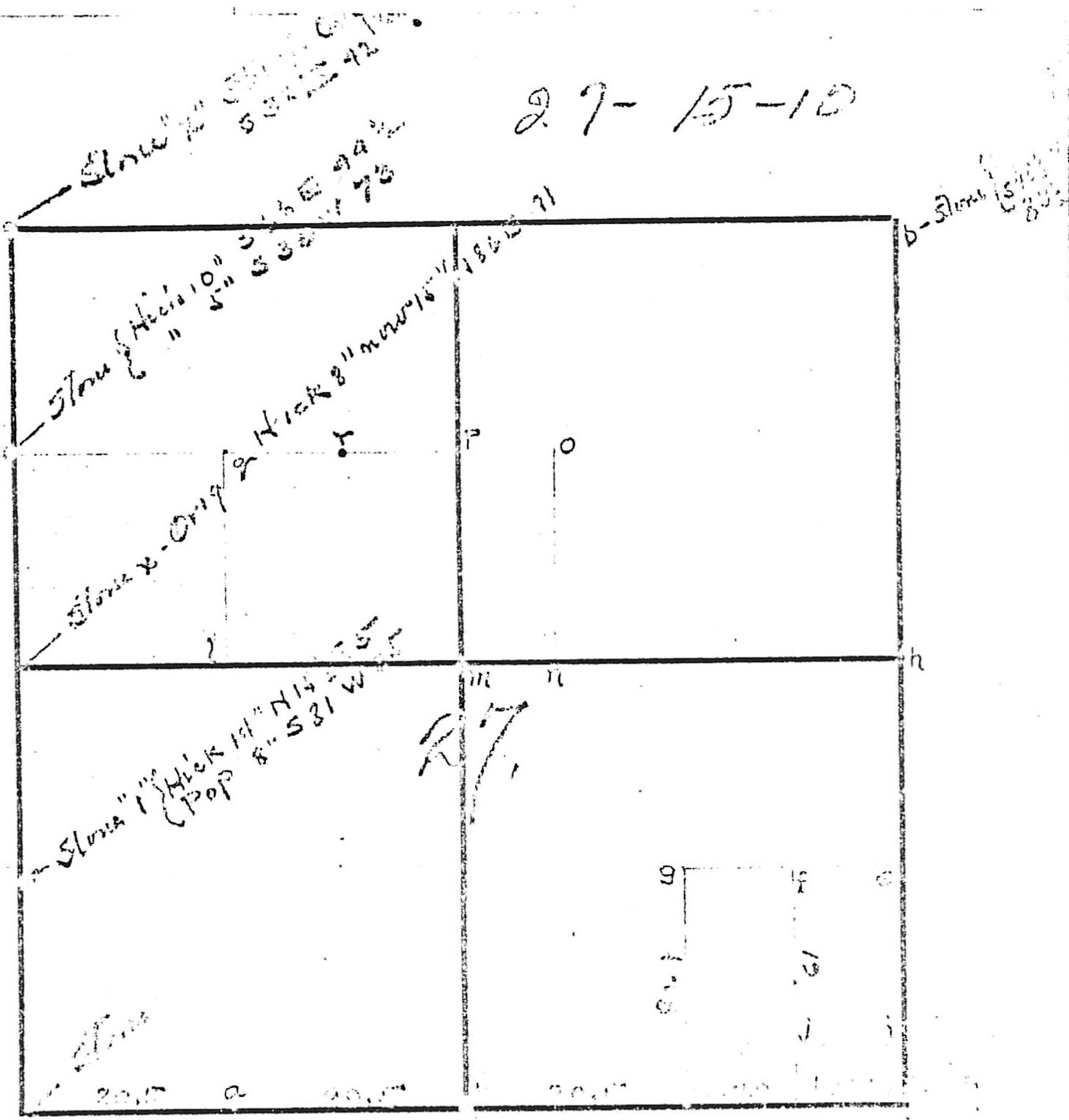


C
O
P
Y

27-15-10



- a - Stone "x" { 50.14" N 14 1/2 W. 77 1/2
- b - Stone "x" { W. Oak 12" N 20 W 1 1/2
- c - Stone "x" { " " 12" S 3 E 41
- h - Stone "x" { Norway 17 1/4" S 20 E 50
- g - Stone "x" { " " 5" S 2 E 49 1/2
- l - Stone "x" { W. Oak 18" N. 30 E. 117
- q - Stone "x" { W. Oak 40 N 55 W 14 1/2
- r - Stone "x" { W. Oak 40 S 20 W 20 1/2
- l - Stone "x" { W. Oak N 14 1/2 W. 5 1/2
- m - Stone "x" {
- n - Stone "x" {
- o - Stone "x" { W. Oak 12" S 20 E 44
- p - Stone "x" {
- q - Stone "x" {
- r - Stone "x" {
- s - Stone "x" {
- t - Stone "x" {
- u - Stone "x" {
- v - Stone "x" {
- w - Stone "x" {
- x - Stone "x" {
- y - Stone "x" {
- z - Stone "x" {

Handwritten notes and signatures, including '1877' and '1881'.

SECTION PLAT SHEET

OWNER _____

DATE _____

SECTION

27

TOWNSHIP

15

RANGE

10

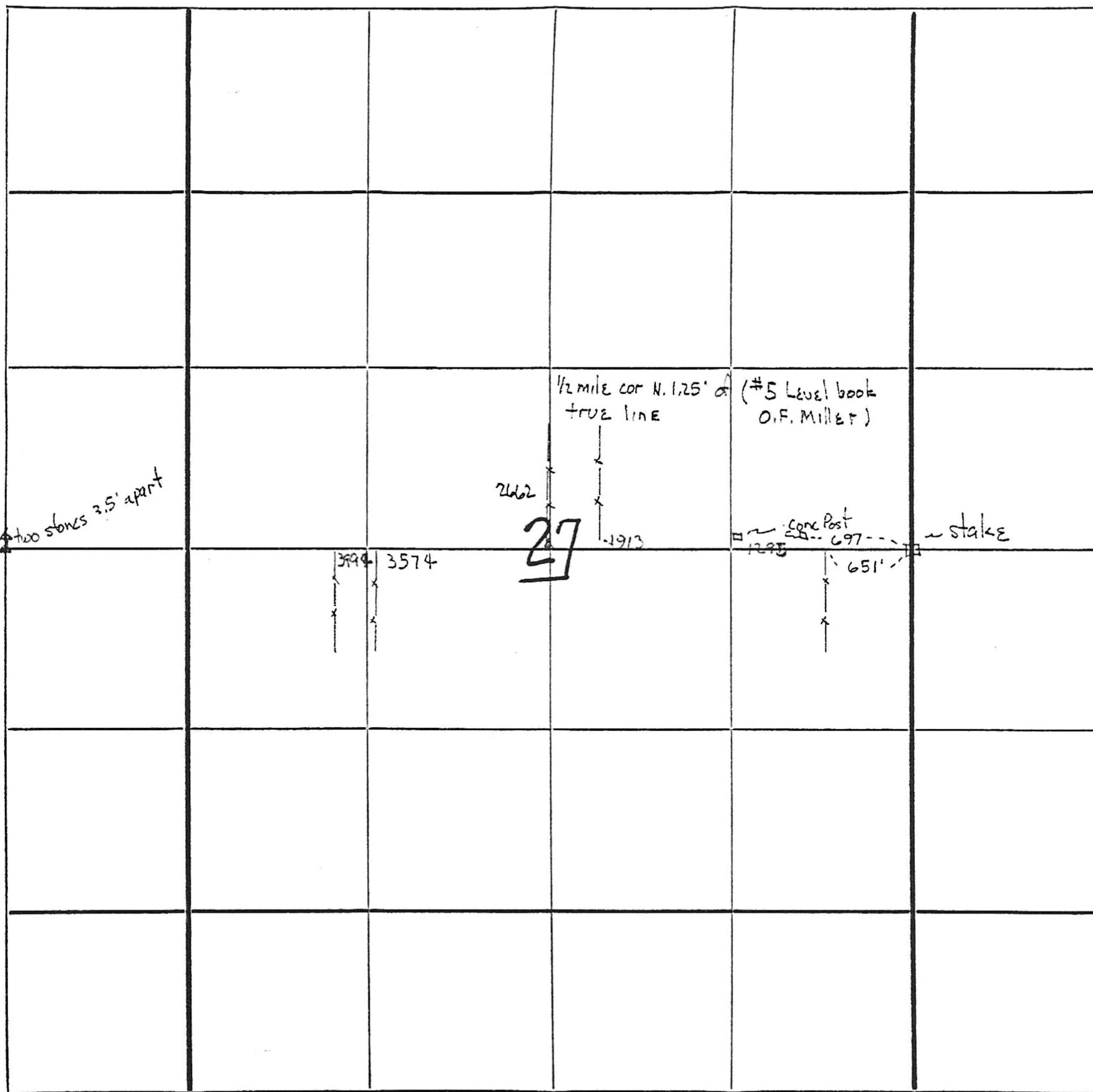
COUNTY

Vermilion

STATE

Ind.

SCALE _____



SEE FILE

#

	31					36
1	6					1 6
36	31					36 31
	6					1

Stone Set & of Sec 27
 by W.G. Parrott - 1925
 Charles F Millars 1st Add.
 Shows Stone 1337.7' N & 332'
 E of above Stone also
 a Stone 1660.8' W of this
 Stone.

Copied from Records of
 Capt. Halverson - Surveyor of
 Vermilion Co. 1973

Field note - no name - 1877 & 1878
_____ add by NBP E54 H21

- w 31
- w 13 Smith Reed add by NBP
- w 23 Frank C Miller by NBP
- NBP Chas Miller add H-3 H-21
- " G. M. Reese 3rd add H21
- " Smith Reed add
- " Ernest Dultz
- " Frank Miller W-5
- " August Sevic ^w #28
- " Ben _____