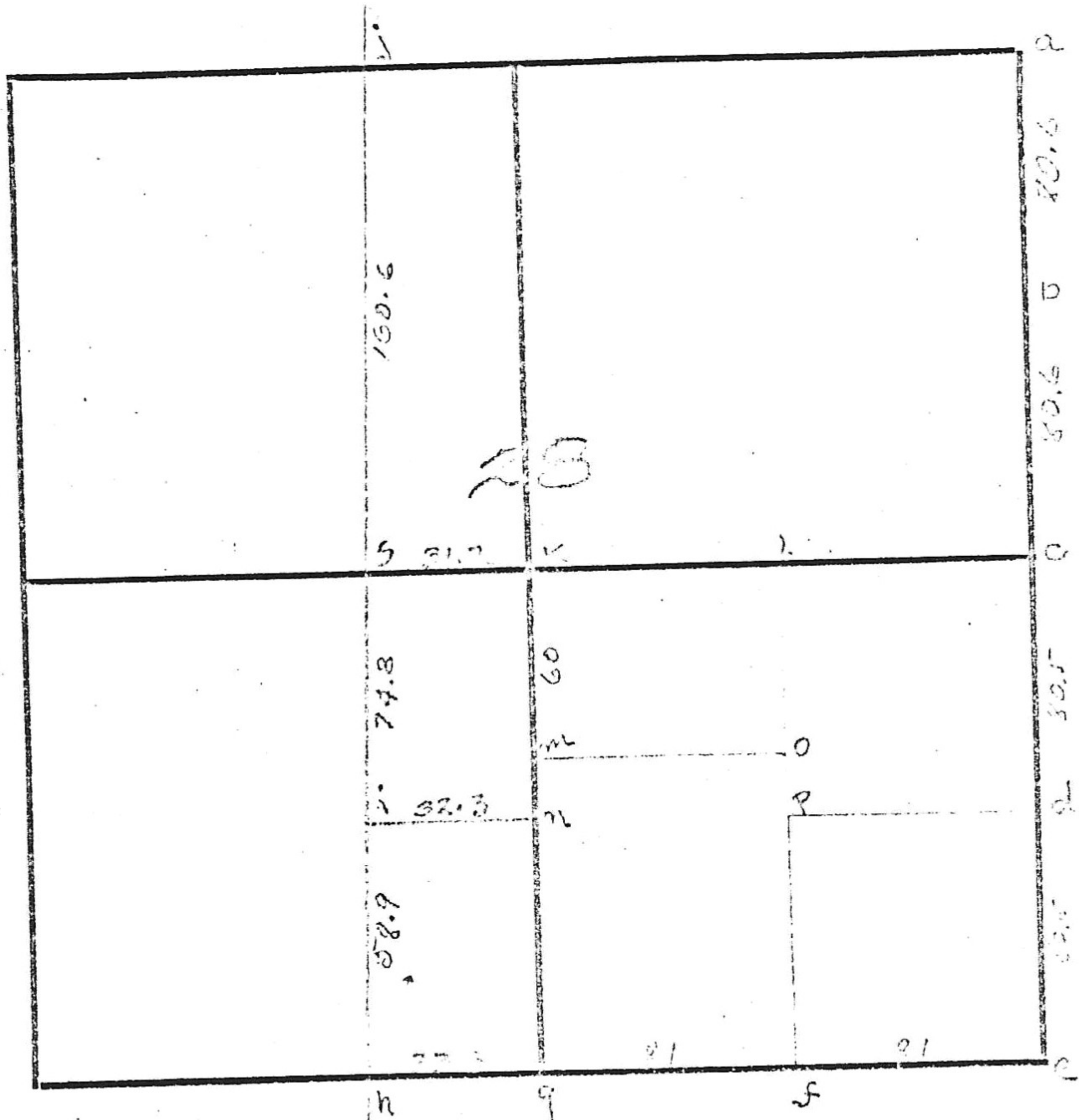


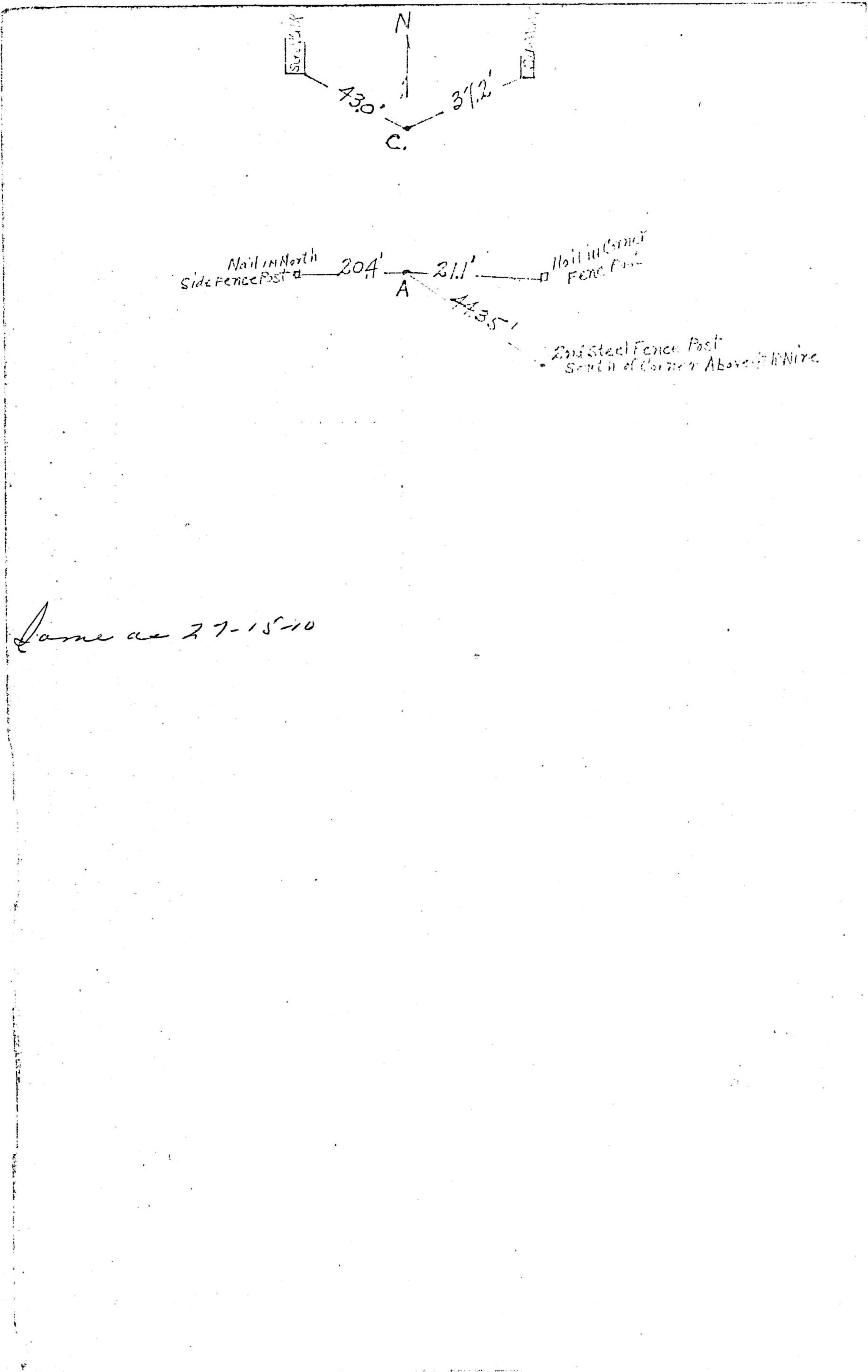
28-15-10



- a - stone "x" Origin Oak stump 20' S 23° E 112
- b - Stone { Hich 10" S 66° E 40'
- " 2" S 20° W 22'
- c - Stone { Origin Oak 20' S 23° E 41
- d - Stone "1" { Hich 14" N 10° E 5'
- " Popl 91 S 51° W 32'
- e - Stone "x" { W. Hich 8" S 57° E 42'
- " Corn 10" S 77° E 82'
- f - Stone "1" { W. Oak 20" N 8° W 57'
- " Oak 8" N 32° W 23'
- g - Stone "y" { Aug 26" N 47° E 5'
- " Oak 26 S 37° W 17'
- h - Stone { Oak Aug 18 S 41° E 17'
- " Oak 26 17° N 41° E 13'
- i - Stone "1" { W. Oak 12 9° N 77° E 30'
- " Oak 10" N 33° W 43'
- j - Stone - Aug 11, 5' 30" N 15° E 25'
- k - Stone "x" 20' S 11° W 20'
- l - Stone "y" Hich 22 S 57° E 75 1/2'
- m - { Oak 12 N 35 1/2° E 17'
- " Oak 12 S 75° W 20'
- n - Stone "1" { App 14" S 23° E 17'
- " 14 12° S 32° W 27'
- o - Stone "1"

Stone "x" { Oak 20' S 23° E 112  
 Stone "y" { Oak 26' S 37° W 17'  
 Stone "1" { Oak 20" N 8° W 57'  
 Stone "x" { Oak 20' S 23° E 112  
 Stone "y" { Oak 26' S 37° W 17'  
 Stone "1" { Oak 20" N 8° W 57'

(SEE NEXT SHEET)



*Same as 27-15-10*

S  
 O  
 C  
 Y