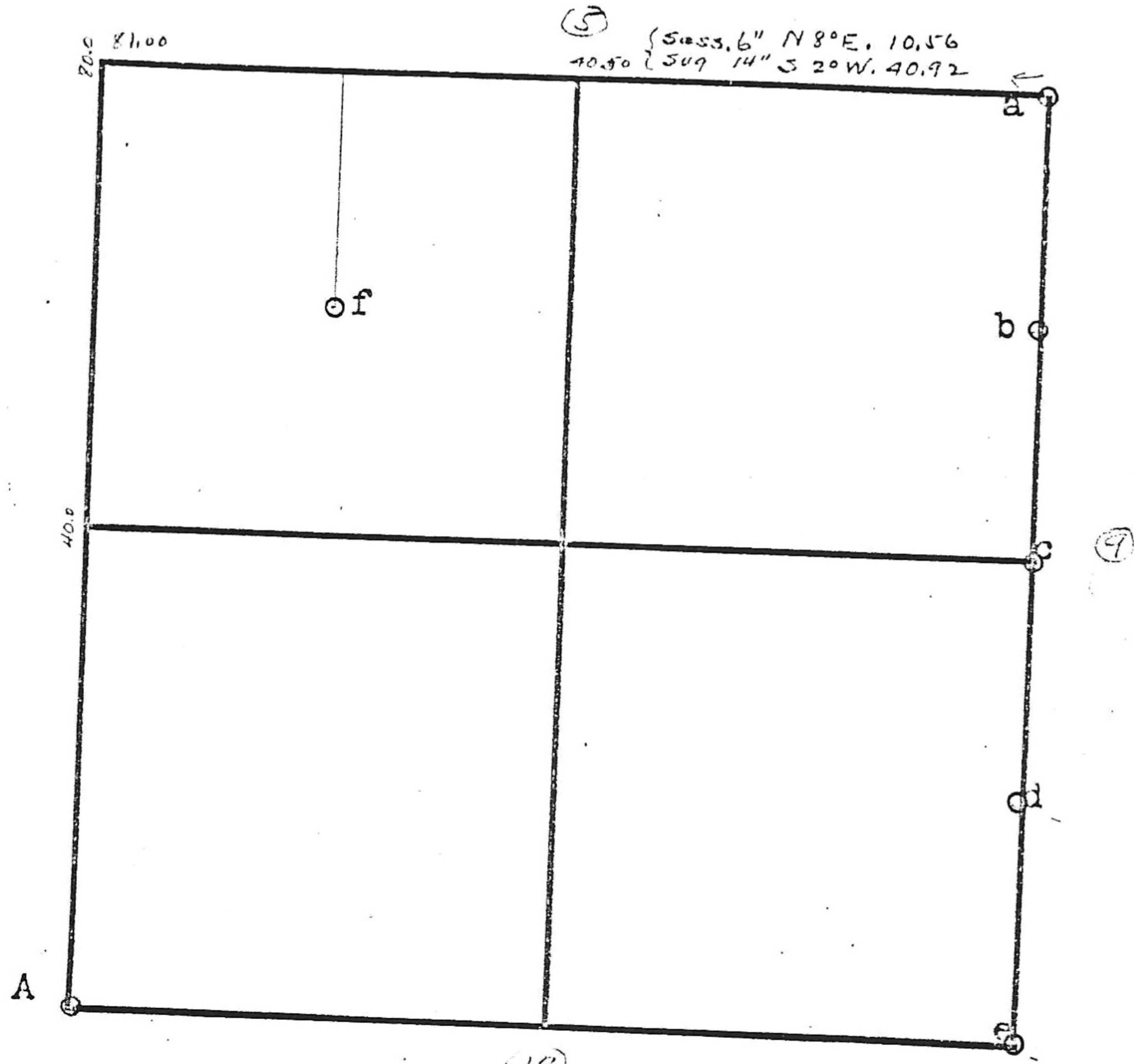


SEC. 8 - 15 - 9

40.- { 509 15" N14E 12.54
 { E. Oak 12" S11E 19.8
 80.- { 509 12" S25W 11.88
 { W. Oak 10" N11E 33.66
 4.50 E. Oak 6.6 S.E.
 78.50 Creek 9.9 S.E.



(5) { 509 14" N8°E. 10.56
 { 509 14" S 2°W. 40.92

- a- stone ORIG. Cor. W. Oak 24" N10E 13.2'
- b- stone $\frac{1}{2}$ mi
- c- stone $\frac{1}{2}$ mi
- d- " in lane
- e- " See A sec. 17
- f- Sugar 9" N $\frac{1}{2}$ W 18.4 M.G. Rhoads 1866
 Ex. Oak 9" Zell 1903

Swan by — 1903

p. 18