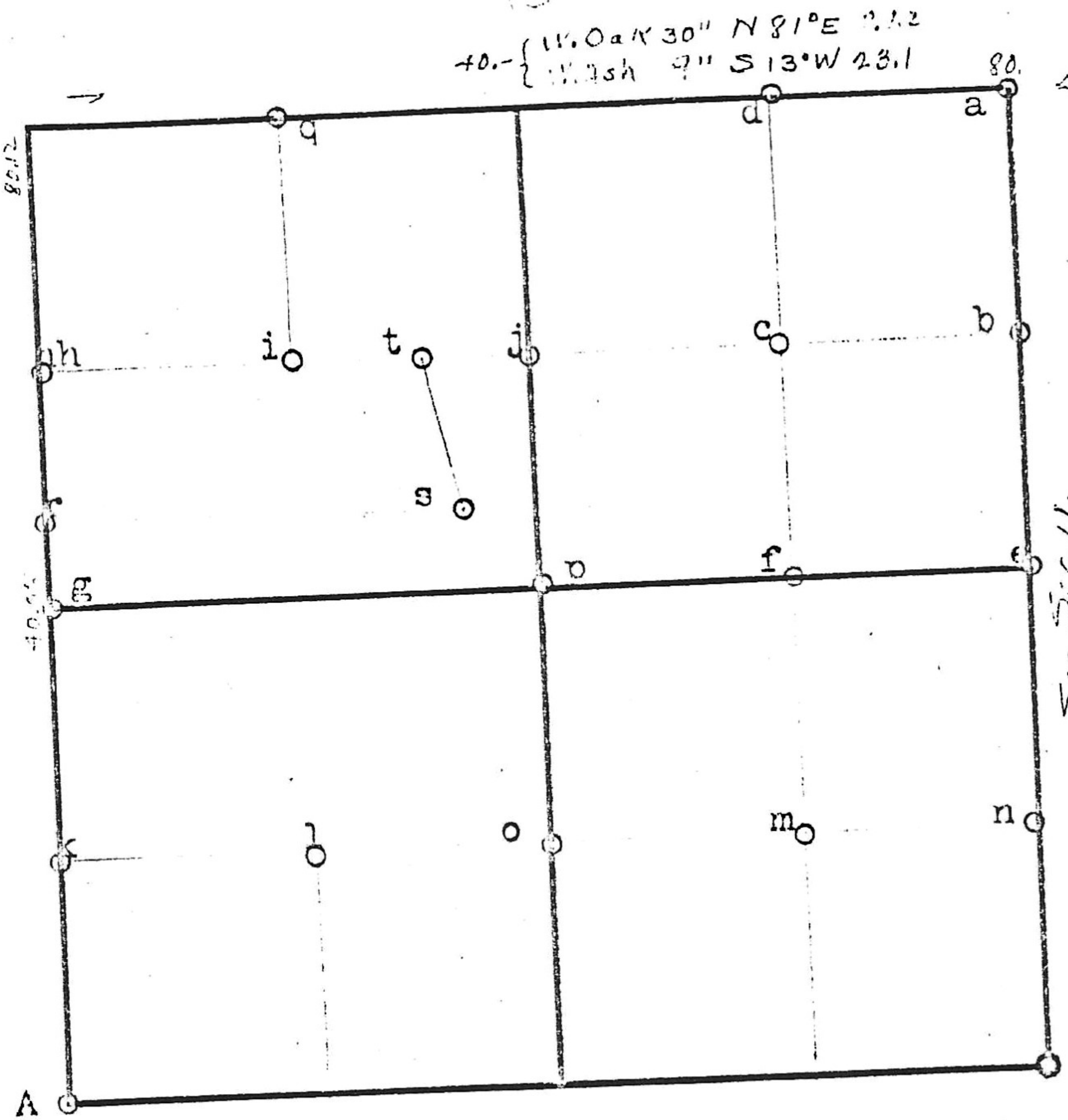


SEC. 10 - 15 - 9.



40.05 - { W. Oak 18" N 75° E 18.1
S. Oak 18" N 75° E 18.1

40. - { W. Oak 30" N 81° E 21.2
W. Oak 9" S 13° W 23.1

S. Oak 30" N 75° E 7.26
S. Oak 30" S 23° W 27.05

See Sec. 11.

- a- Stone on hill Hick 7" N61½E 21.1
" 6" S48½E 19.8
 - b- stone "X" W.Oak 30" S61½W 28.4
 - c- " in lane
 - d- " "X" W.Oak 32" N52E 33.0 Rhoads 1866
 - e- "
 - f- stone Sug. 4" N37W 11.5
W.Oak 36" S10¼W 50.8 Rush 1885
 - k- stone W.Oak stump 40" S66W
 - o- " Hick & Wal. 21.1
 - p- " Hick 18" S24½W 79.2
 - h- " W.Oak 40" N41¼W 32.3
 - j- " Elm 6" N45W 13.2 Rush 1888
 - s- " in center road 40' from W.end of culvert
Conley 1905
- s-t-538.3', t-h- 2075.4', h-r-809.1, r-s-2231.8',

June by M. G. Charles 1866
" .. Bret Keck 1885 N. H. James. Mrs. Geo. Dord
" .. " .. 1888

June^w — N. B. P. Andy Jones; Geo —

P. 18 P. 6