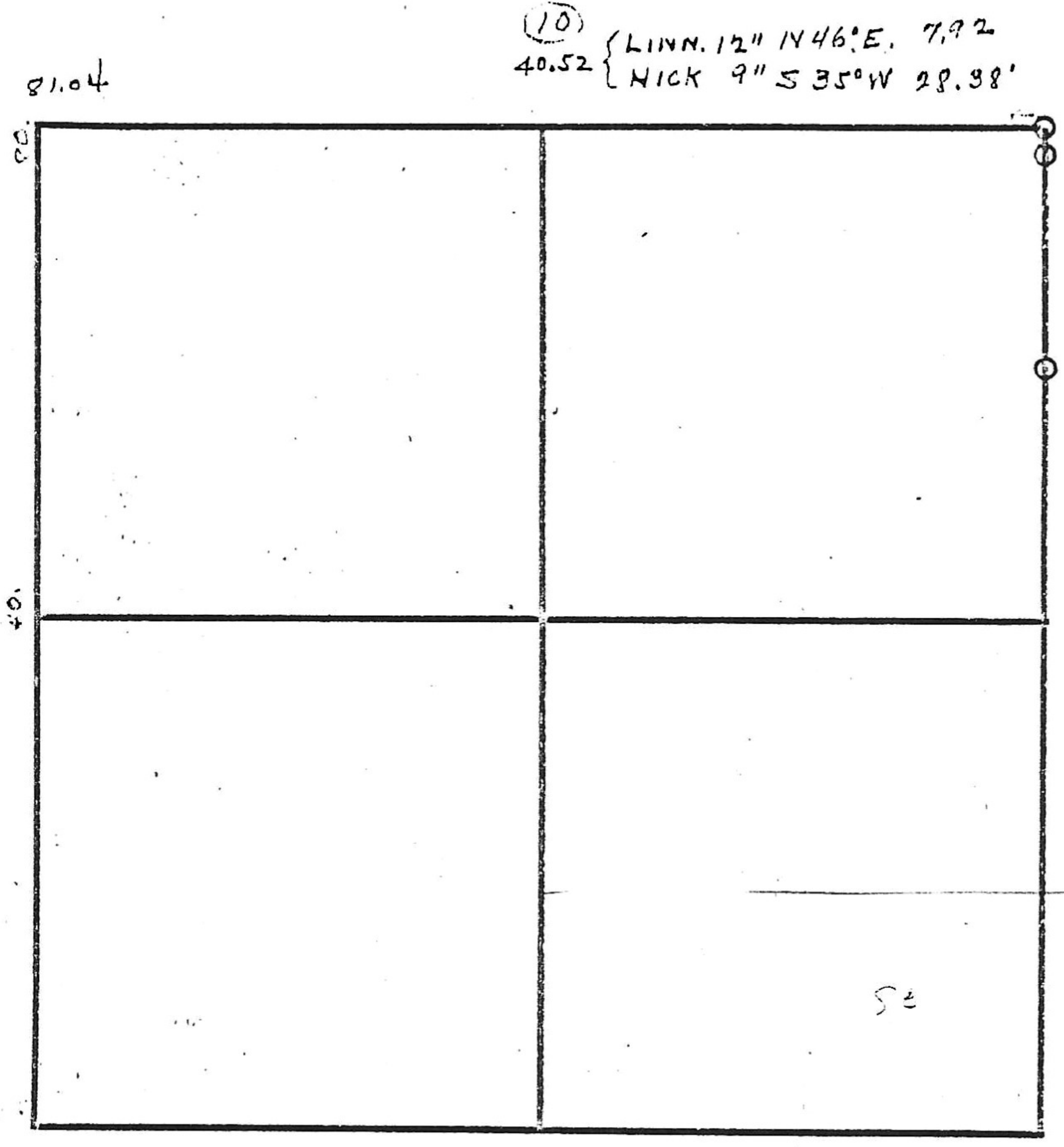


SEC. 15 - 15 - 9.

40- { NICK 11" S 25° E 5.94'
 { BRICK 12" N 50° W 19.8'
 50- { W. Oak 30" N 70° W 12.54'
 { Elm 10" S 77° E 16.5'



(10) 40.52 { LINN. 12" N 46° E. 7.92
 NICK 9" S 35° W 28.98'

(14)

(22)

Stone
 NW or SE 1/4 SE 1/4 - 16 - 15 - 9.
 22.32 NW to a spike nail/BC in SW root