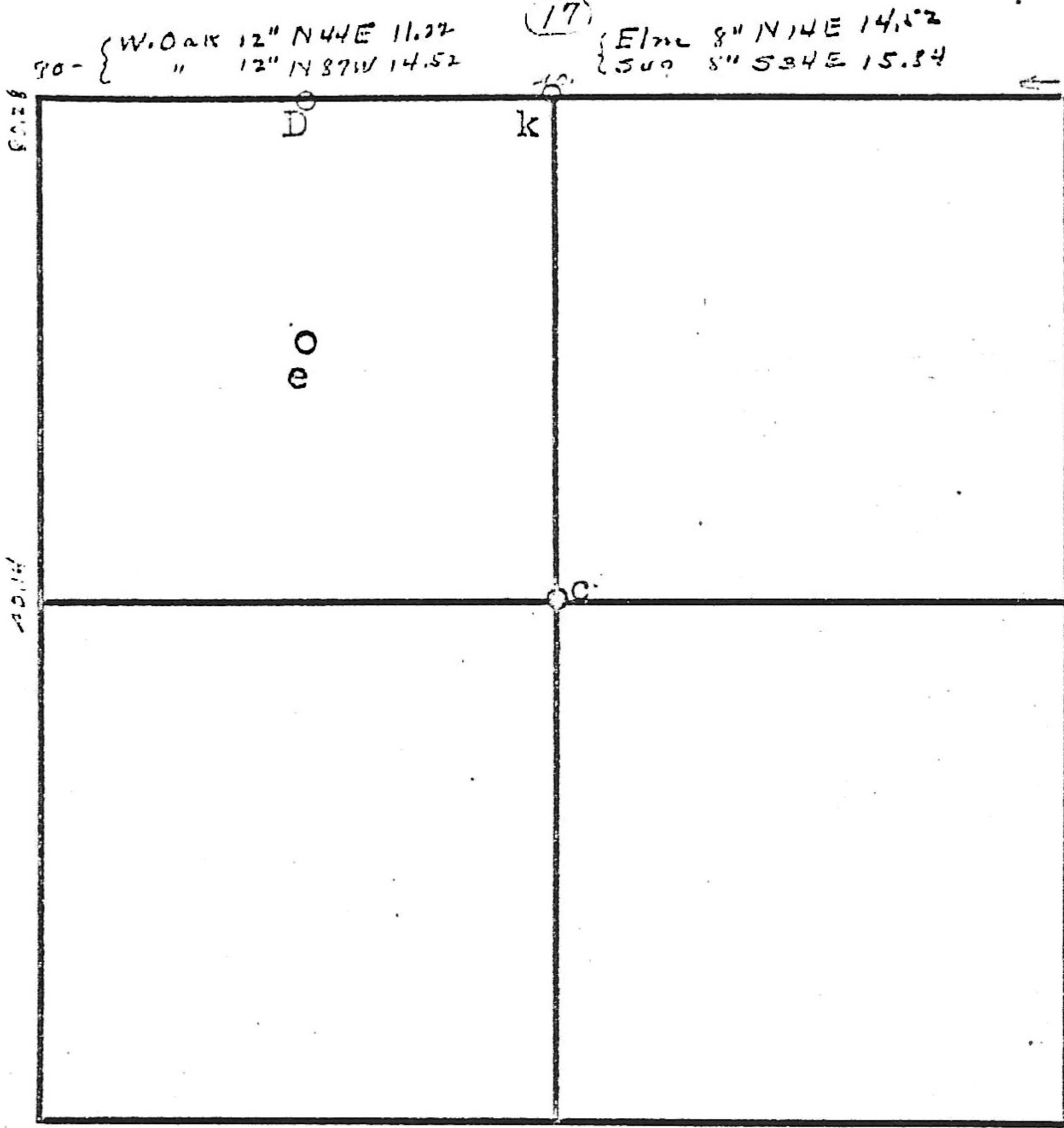


SEC. 20 - 15 - 9



42.14- { W. Oak 14" S 71 1/2 W 13.56
 { E. Oak 6" S 77 E. 21.15

- D- stone in road "X" Stone S31E 17.82
 " S22 1/2 W 27.06
- e- " "O" Sug. 8" N29E 9.24
 Hick 7" N31W 15.2
- k- " Dbl. E. Wal 10" S27E 31.02
 Hick 8" N52W 67.32 R.A.P. 1891
- c- " Ash 18" S16E 40.7
 Hick 12" S50 1/2 W 30.9 Conley 1907

from by CAP Conley 1907

P. 18