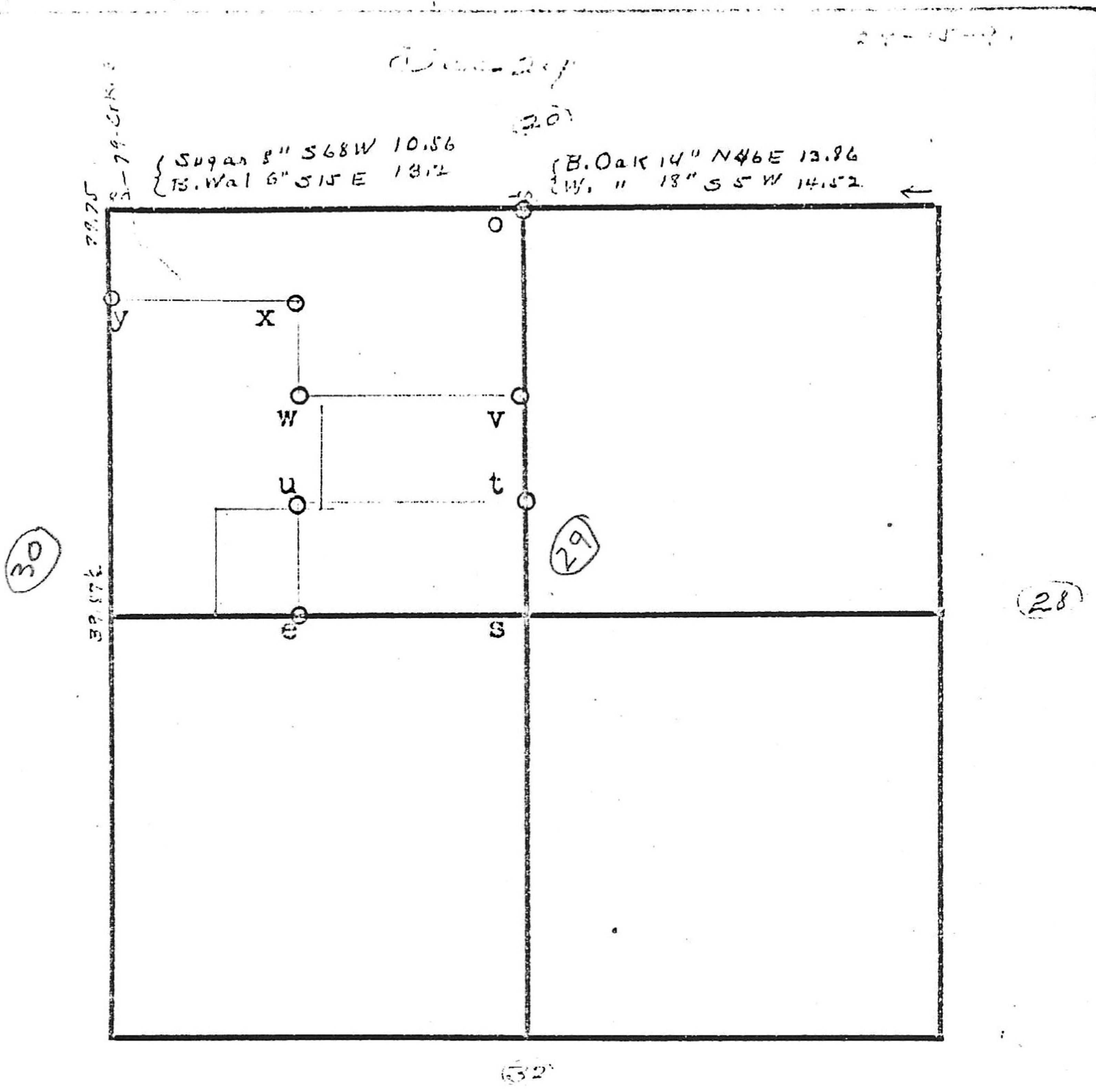


29-15-9



W. Oak 24" S47W 17.16  
 Sug 10" N80E 27.72  
 W. Oak 10" S60E 4.62

o- ORIG.  
 s, t, u, v, - stones "X"  
 w- stone "X" W.Oak 24" N15E 66.0  
 x- " Sug 10" N80E 27.72  
 W.Oak 10" S60E 4.62  
 y- " Hick 6" N55E 33.3 Henderson 1873

Com. at NW Cor, West 163 rds, set stone, east 162 rds  
 " " SE " N. 161 rd. found Orig trees, set stone  
 W.Oak 18" N41W 16.5', Lyn 15" S2E 37.62, thence W.  
 163 rds, set stone, Pop 16" S62E 16.8, W.Oak 10" N14E  
 10/8', thence west 163 rds to orig. stone.

Com. at 1/4 stone on W, east 40 rds, set stone, Mul 8" N41  
 E 85.8, north 40 rds, set stone Wal SW 61.8, East  
 40 rds set stone B.Oak 10" N16E 40' thence north 40  
 40 rds set stone R.Oak 10" N73E 38.28  
 P.Z. Anderson 1878

Survey by J. H. Anderson 1873

" " P. Anderson 1878

P. 1.