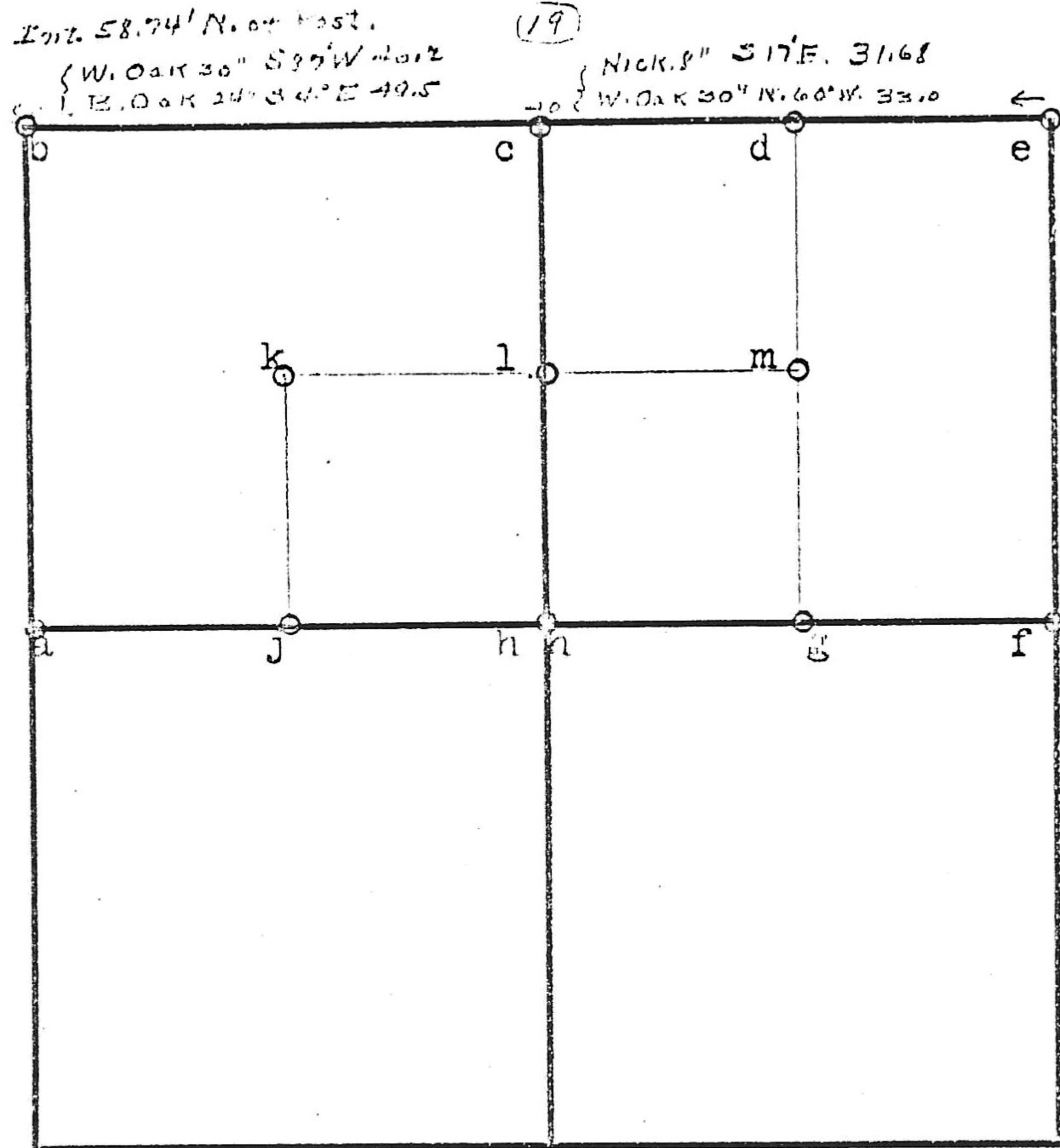


SEC 30 ) 15 - 9/



Found 6/23

37

- a- stone
- b- stone
- c- Orig oak standing, Sug 4" S26E 27.06
- e- Syc 14" N56½E 46.2  
B.Wal 18" S26½E 50.16
- f- Stone (large granite)
- g- "
- h- " Hick 8" NW 32.0  
Sass 8" SW 23.1
- j- "
- k- "
- l- " W.Oak 36" S34W 23.4  
" 10" N5½E 25.08 Henderson 1872

Given by Geo. Anderson 1872