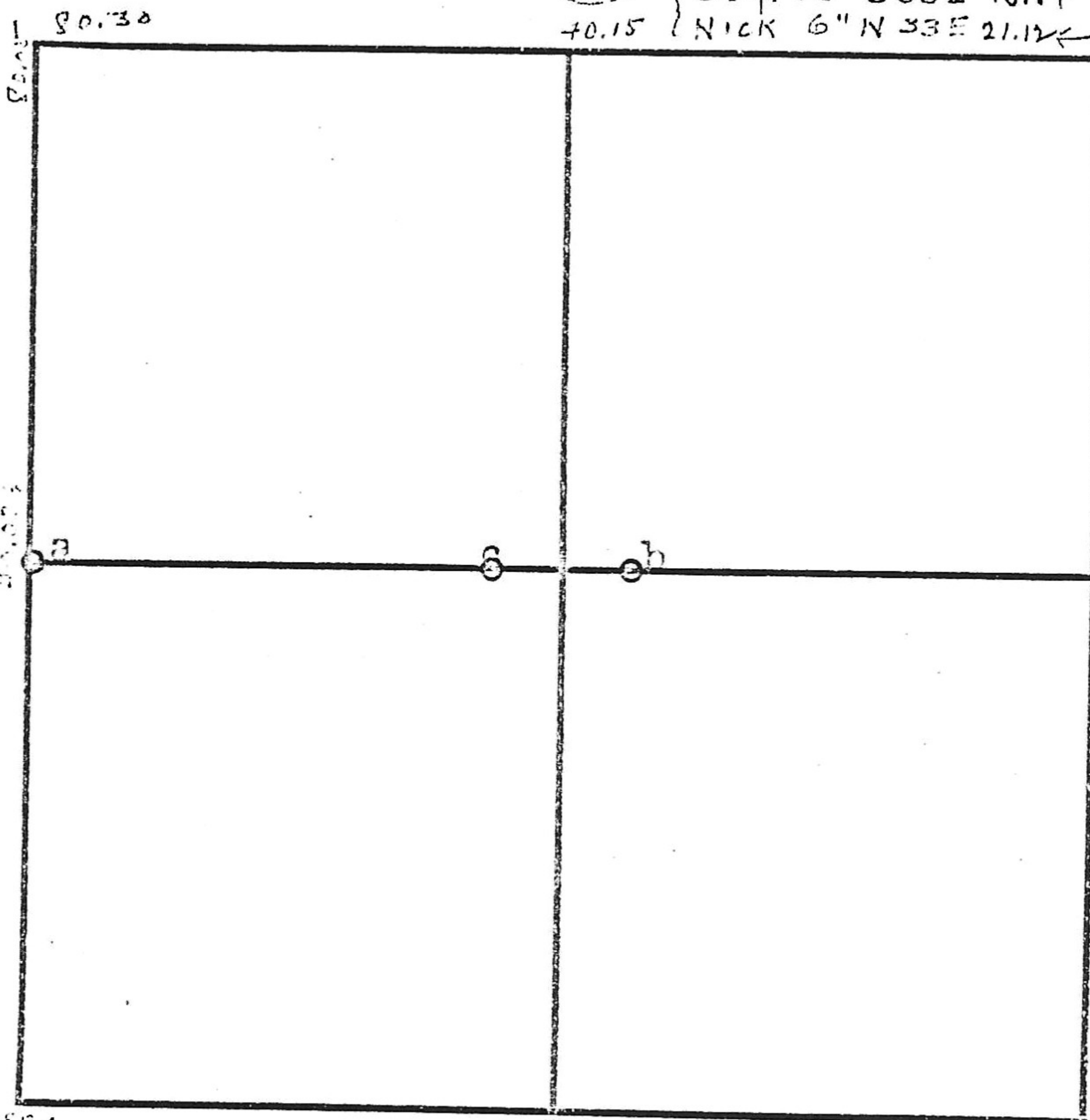


SEC. 33 - 15 - 0.

(28) { 509, 20" S33E 15.94
 40.15 { NICK 6" N 33E 21.12 ←



40- W. Oak 10" N 26° W 12.54'
 B. " 50" S 49° E, 8.58.

(34)

- a- stone (old) Stone "W" W. 25'
 Twin Locust 3" N33E 25.5
- b- " "X" W.Hick 7" N62E 6."
 " 8" S33W
- c- " on top hill W.Oak 28" S3W 10.5
 R.Oak 20" S56E 20.5
 J.Booe by O.B.Zell 1914

Sur by J A Bone July 1914
Land sure by N B P