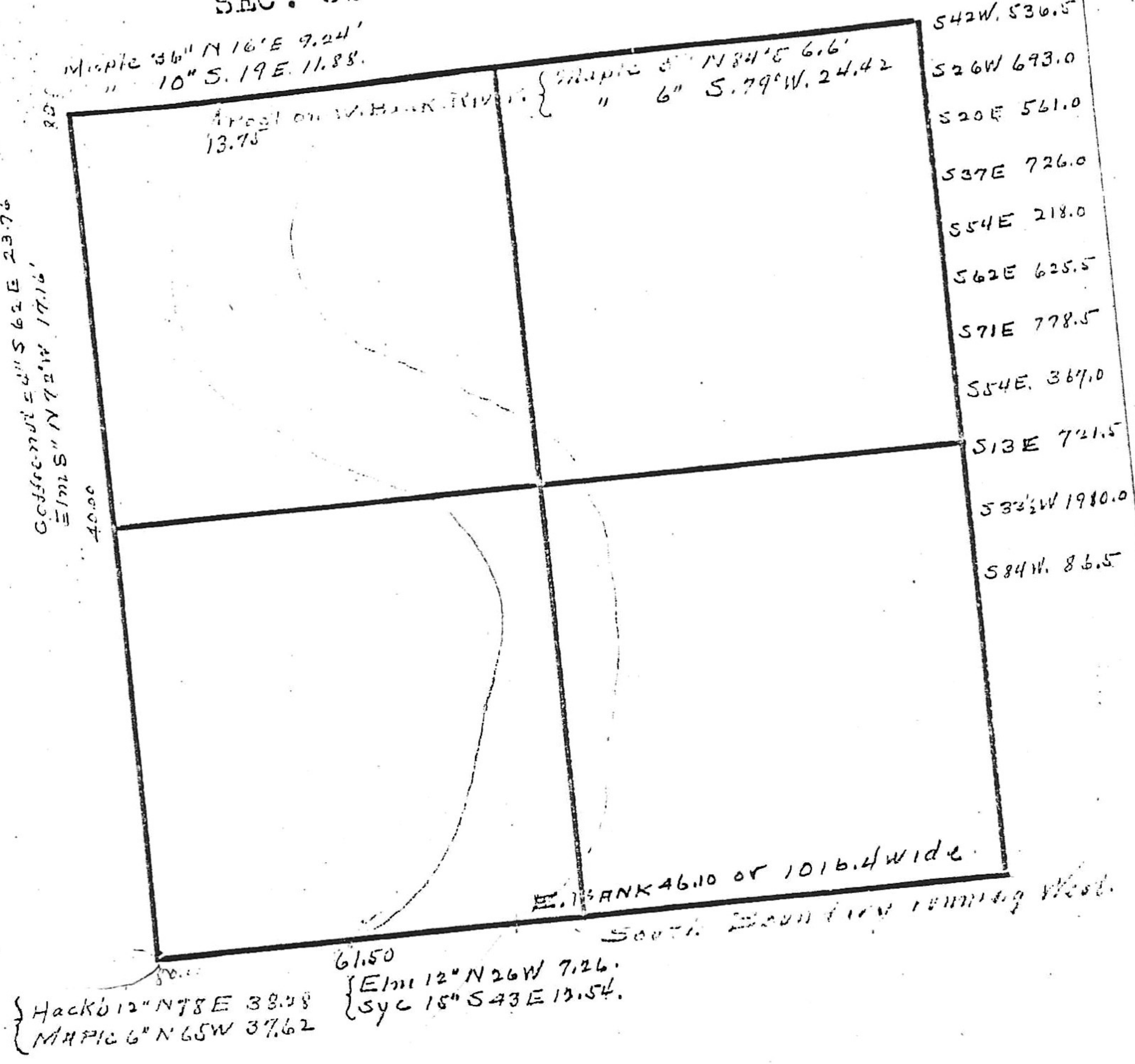


SEC. 35 - 15 - 9.



Hack 12° N 78 E 38.58  
 Maple 6° N 65 W 37.62

61.50  
 Elm 12° N 26 W 7.26  
 Syc 15° S 43 E 13.54

E. BANK 46.10 or 1016.4 wide.

South boundary running West.

S42W, 536.5  
 S26W, 693.0  
 S20E, 561.0  
 S37E, 726.0  
 S54E, 218.0  
 S62E, 625.5  
 S71E, 778.5  
 S54E, 367.0  
 S13E, 721.5  
 S32 1/2 W, 1910.0  
 S84W, 86.5

23.76  
 40.00  
 17.16

Maple 36° N 16 E 9.24  
 " 10° S 19 E 11.88

Maple 5° N 84 E 6.6  
 " 6° S 79 W 24.42

Post on W. BANK RIVER 13.75