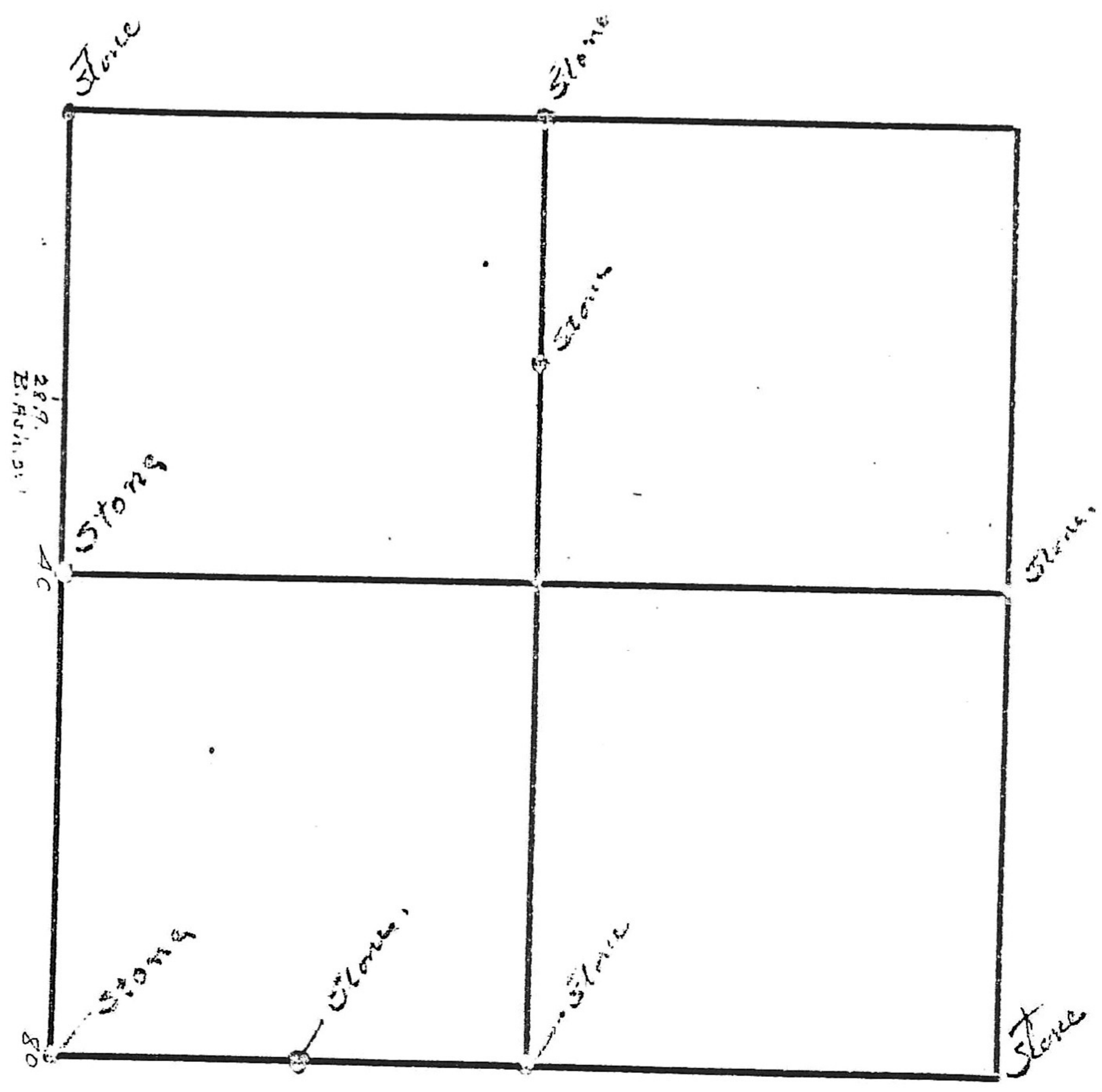


3-16-9



28.9
E. 1/4 Sec. 34
40- { 509.15" N47°E. 12.54
 { 100.45" W. 18.46
80- { HICK 20" N45E 9.24
 { BIRCH 18" S35W 9.9

From PARRETT
Stone NE Cor. Sec 34
No witnesses

Stone NE Cor NW 1/4 NW 1/4
No witnesses

P. 2
Served by N. S. P. Aug. 1861