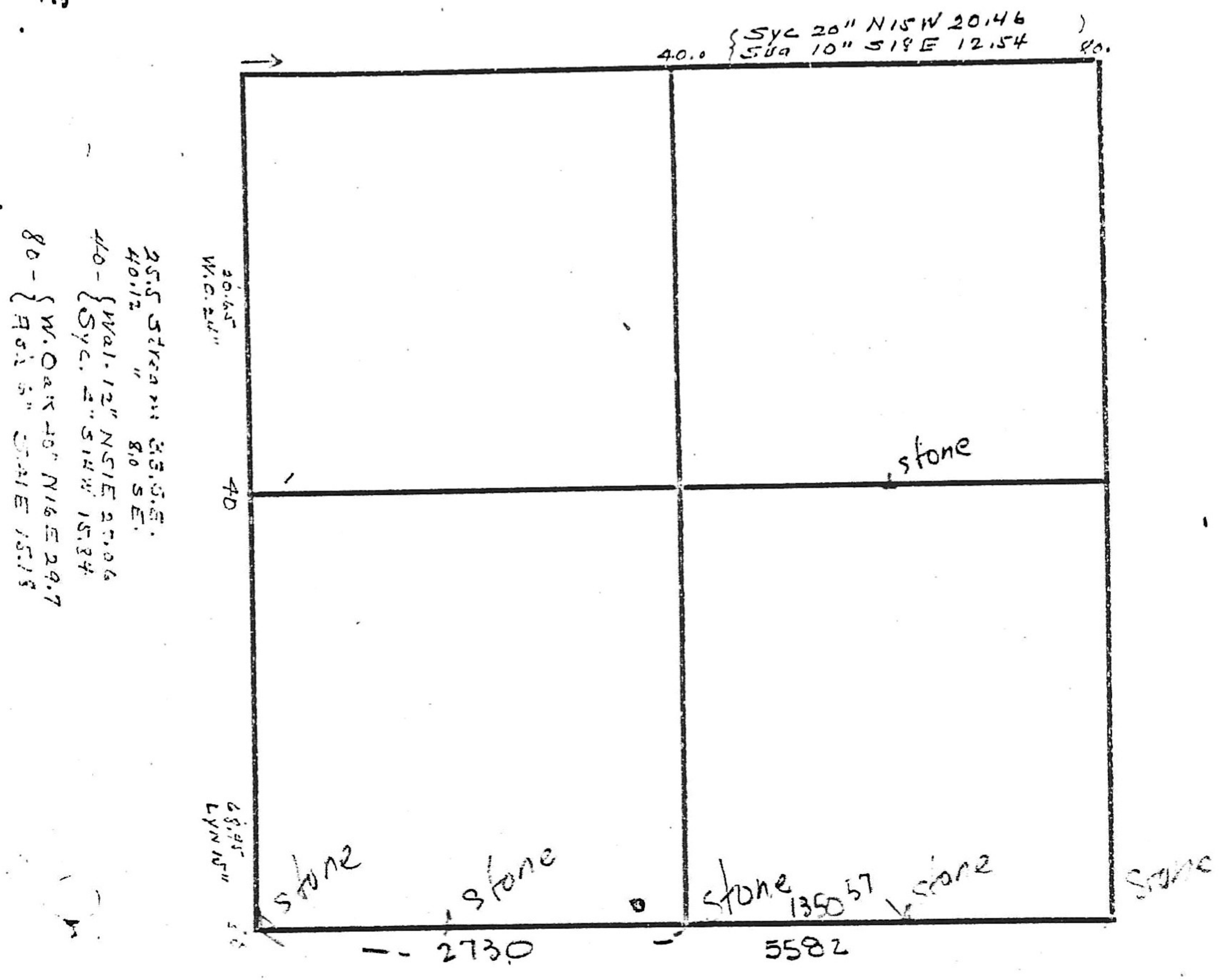


21-16-9

16



25.5' STREAN 33.5' E.
 40.12' WAL. 12" NS 1 E 27.06'
 40 - { SYC 2" S 14 W 15.34'
 80 - { W. OAK 10" N 16 E 29.7'
 { 9.5' S 1" S 1 E 15.13'

Wm G. PARETT

Stone 16 rds N. of SW. Cor SE $\frac{1}{2}$ SE $\frac{1}{4}$ - Sec 21-16-9
 Stone 419.5 North of former - Stone N. of 419.5
 Stone 1141.5. Stone on West line Sec 22-16-9
 E $\frac{1}{4}$ from last stone, Stone 294.75 N. of last
 stone - Walnut 12" NW 11.8'
 Stone N. of Post at S end of Lane - 1322' E
 of last stone

See Key West 1886