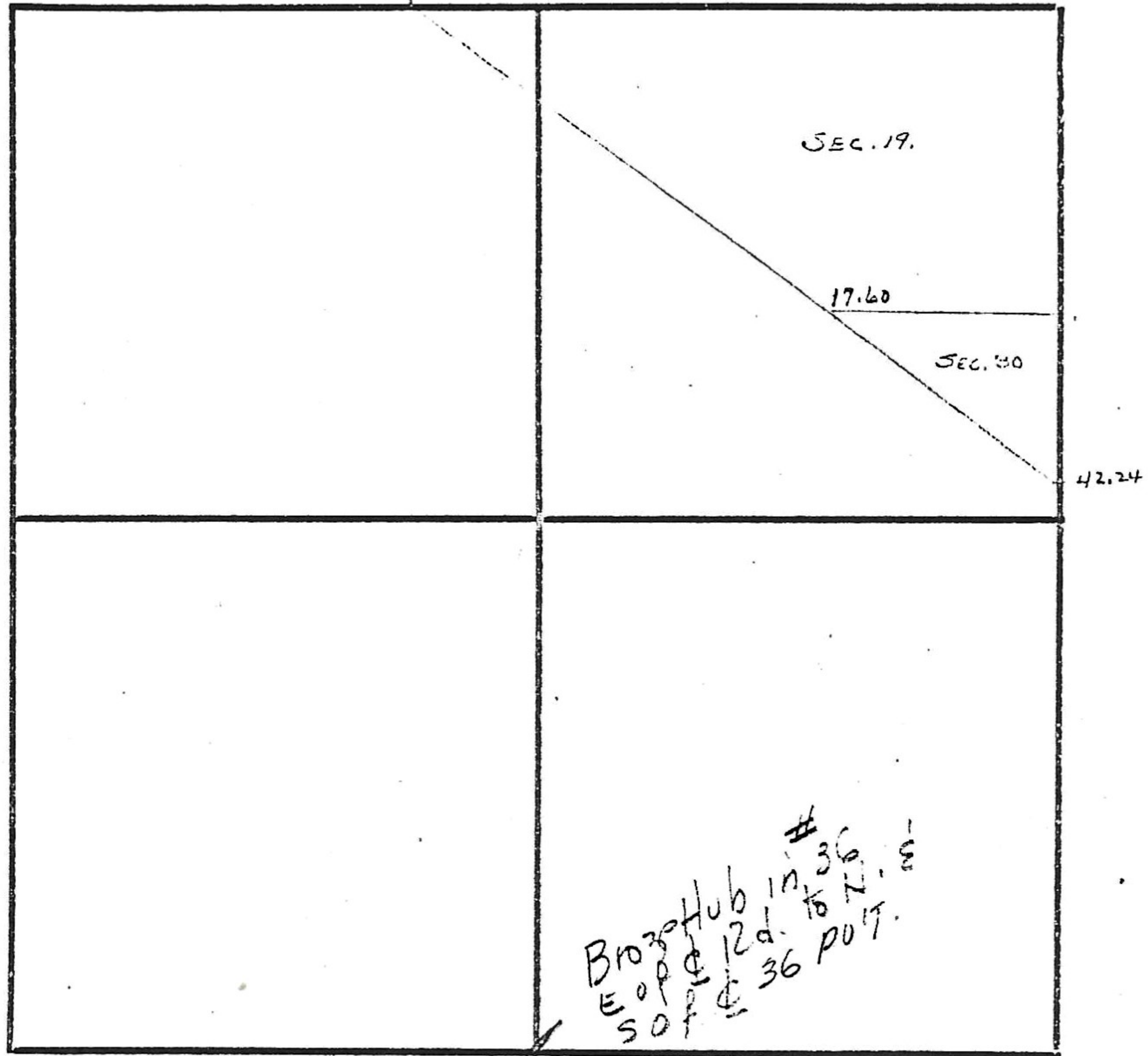


30-16-9

(19)  
{ W. Oak 40" S 35° E 13.86  
{ NICK 12" N 74° W 23.1 N.B.  
N.B.L. not found. 30.60

17.60 { P. Oak 36" N 64° W 5.28  
{ Elm 10" S 74° E 7.92.



Wm G. PARRETT

SE Cor Sec 30-16-9

Plug near  $\phi$  Pavement US RT 36

SW or NE Fr  $\frac{1}{4}$  old fence Post 2640.8' from N  
Twin Walnut NE 14'

Done by N. B. P. Ordinaire