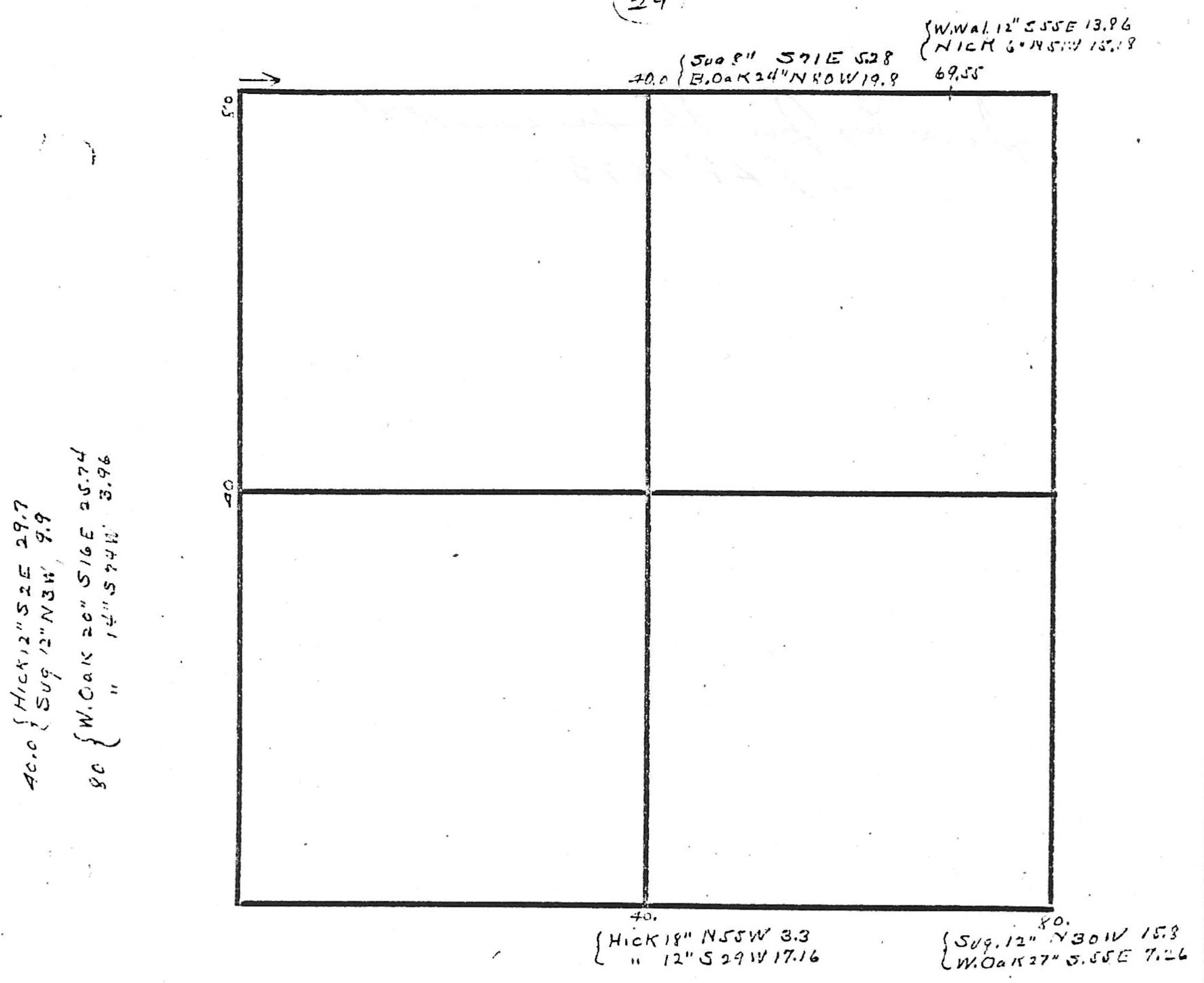


32-16-9

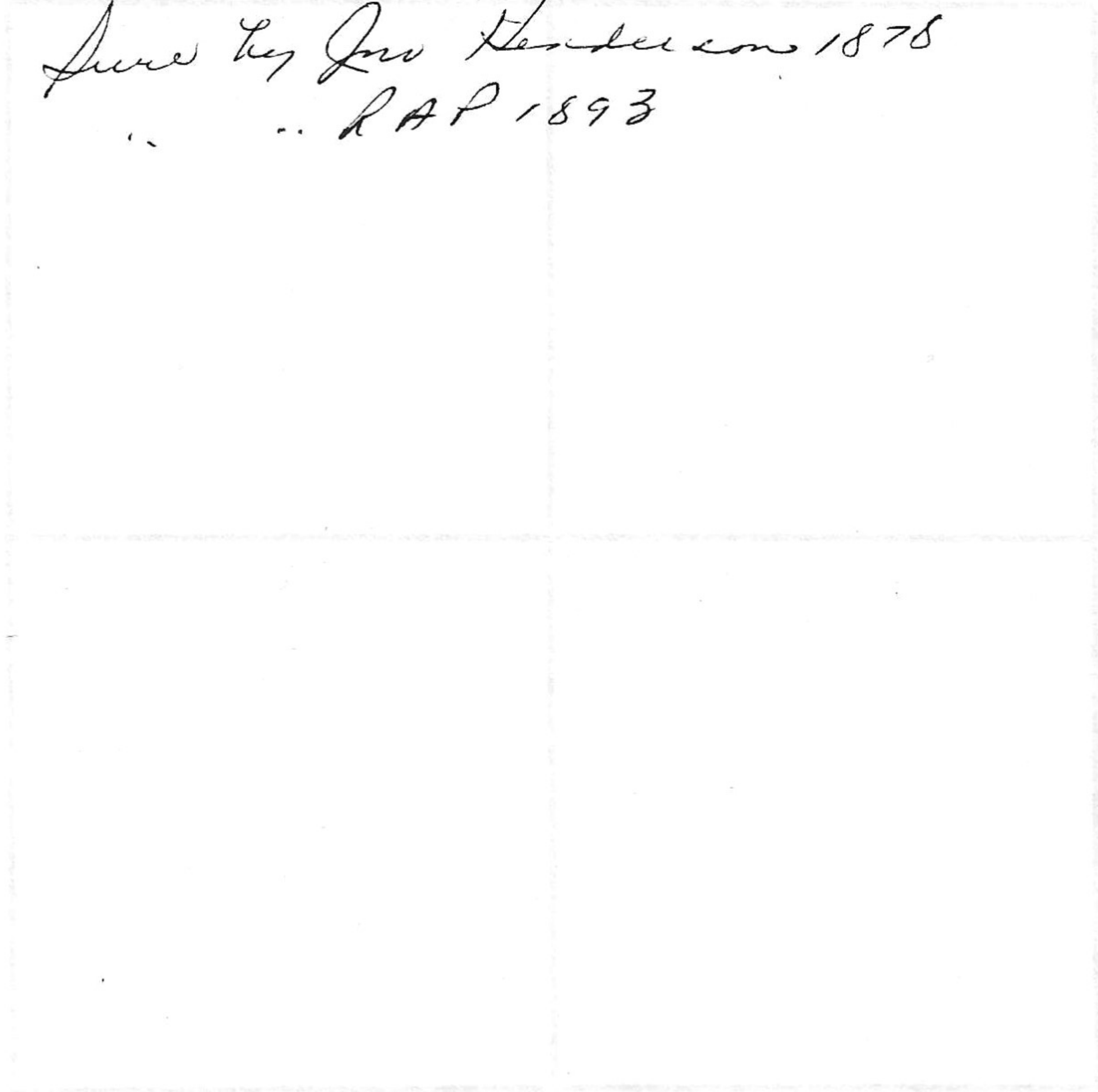
32-15-9

(29)



From Wm G. PARRETI  
 Stone NW Cor NE  $\frac{1}{4}$  NE  $\frac{1}{4}$   
 in fence W Oak 30" N 30.5'

35-12-1  
Survey by Geo Henderson 1878  
" " R.A.P. 1893



Faint, illegible text, possibly bleed-through from the reverse side of the page.