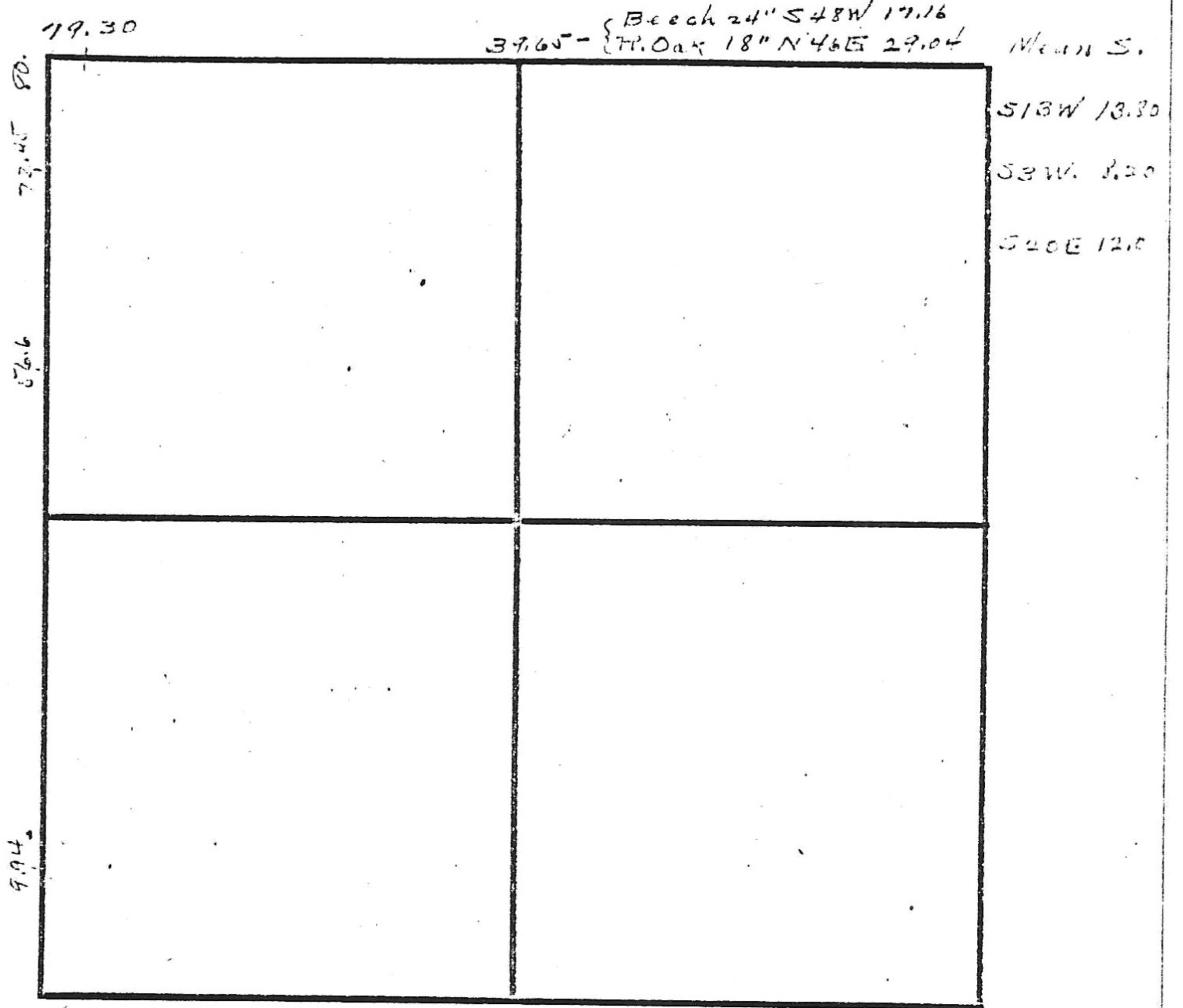


9-17-9

7.94 W Oak 20"
 56.60 - { Birch 22" 10' E.
 72.45 - S 22.18"
 70 - { Red Oak 36" S 68 E 9.24
 80 - { Hick 10" N 46 E 4.62
 { Birch 15" S 20 W 1.65



Recorded P-14-4-13-11-28-27
 Surv. by RAP 1896 Thomas-Porter
 Surv. by WGP 1930 J.W. Thomas Estate E-87

Not Recorded Surv. by WGP for McDonald Bros. W=28
 WGP J.W. Thomas W-32