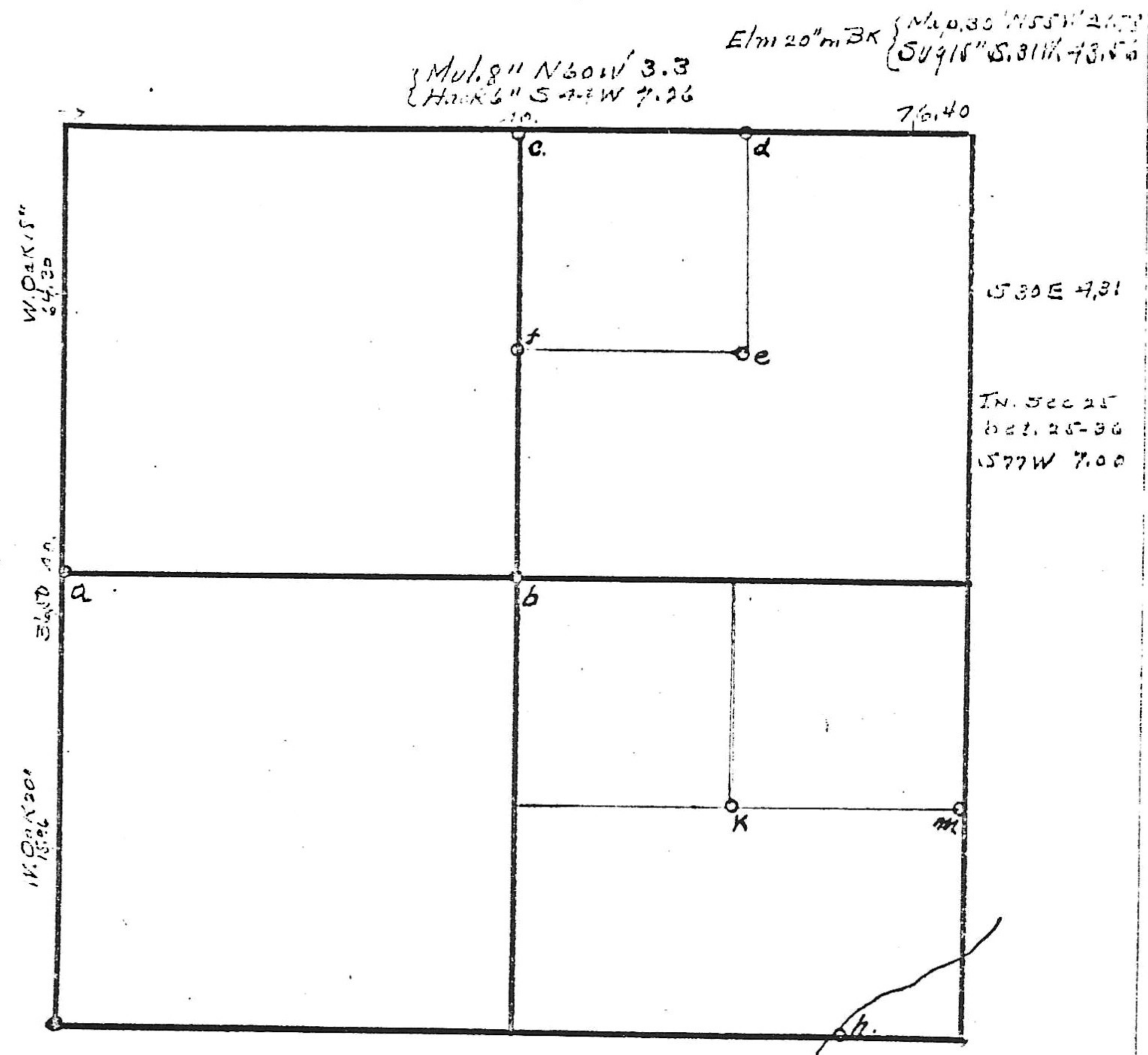


25-17-9

36.50 - Little Run ... 40' S.E.
 70 - { Mul. 15" S. 86° E 46.2
 { Cot. 10" N 79° W 14.52
 80 - { SUG 12" N 80° W 11.58
 { W. Oak 24" N 25° W 5.97



- a - Cotton-wood 12" N. 83° W 21.17'
 Hack-berry 18" N 29° E 60.72'
- b - Stone { Elm 6" S. 84° W. 34.32'
 " 10" S 36° E. 25.74'
- c - Stone { Orig.
- d - Stone { Buckeye 12" N. 39° W. 9.9'
 " 14" S. 47° W 25.74'
- e - Stone { Hackberry 6" - N. 10° W. 24.42'
 { Birch-Walnut 18" S 88° E 33'
- f - In Creek.
- h - Stake { Maple 5" N 40° W. 7.26
 " 7" S 75° W 13.86
- m - Stake { Red Haw 8" S. 64° W. 18.48
- n - Stake { Elm 20" N 87½° E 27.72.
- k - Stake { Elm 48" N 72° W. 11.88'
- l - " { Honey-Locust 10" N 33½° E 16.2° By Rush

By M.G. Rhoads.
 1867 By Siler
 1869.

P-14-4-15

Notes lost no name

Surv. by N. S. P. Brickyard. Other notes

... .. Fred Rush. No notes

Receipt Brickyard E90-43