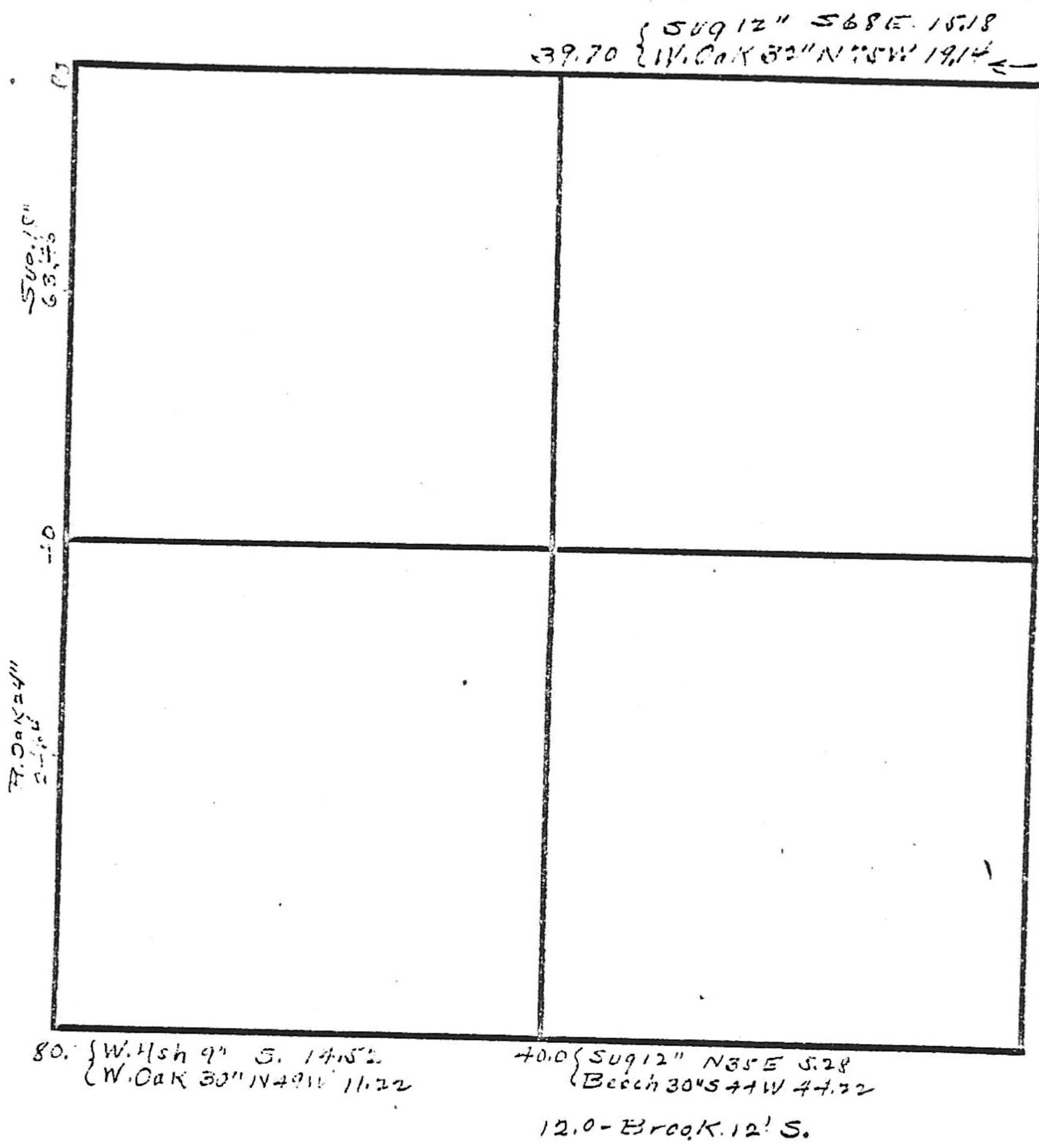


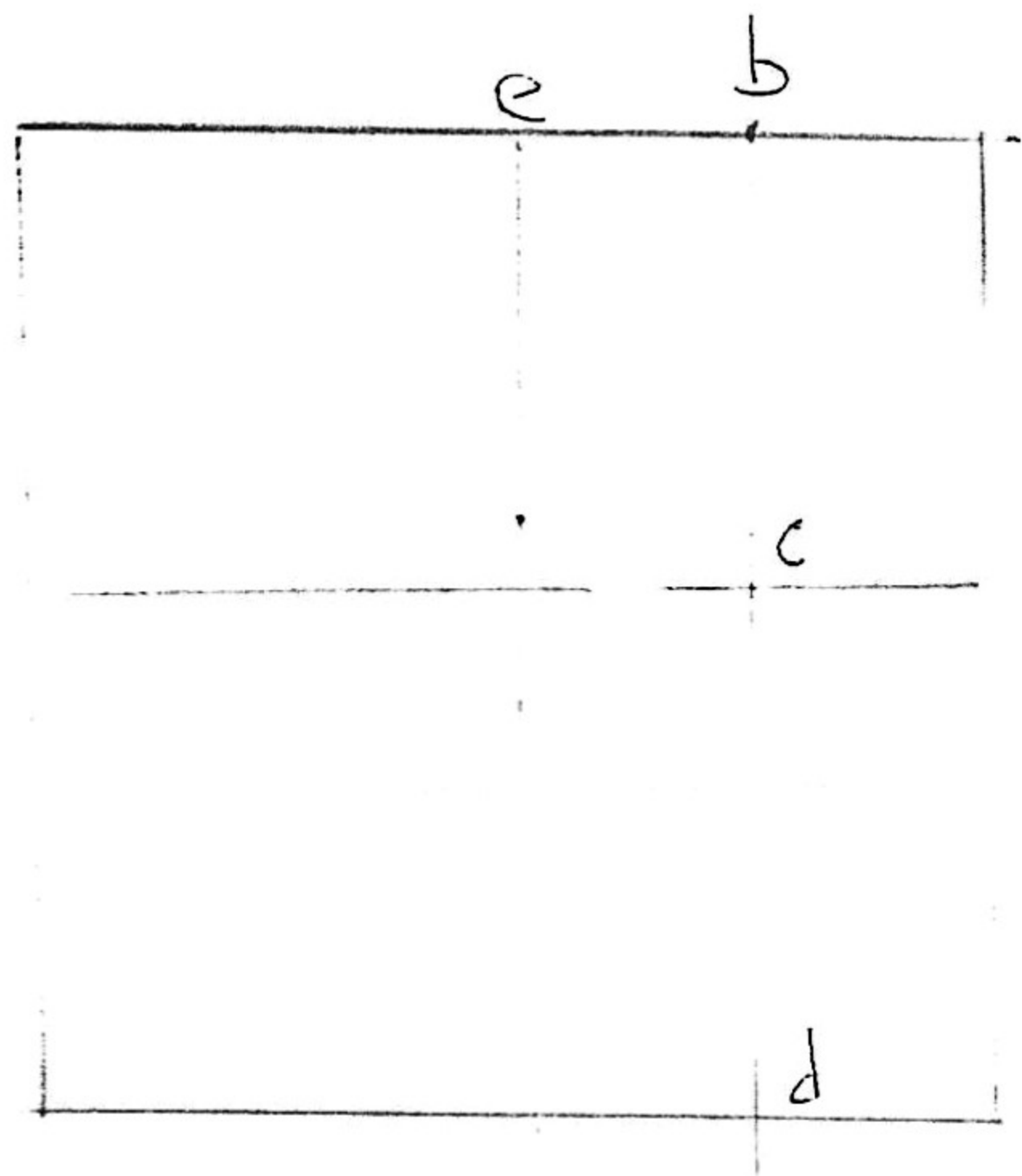
34-17-9

40- { E 1/4 5" N 61 E 12.54  
      { 45.1 5" S 22 E 21.12  
80- { W. Oak 30" N 34 E 9.9  
      { Hick 10" S 8 E 17.82



stone SW cor SE 1/4 NE 1/4 34-17-9  
S 09 12" S 16.5'  
W. oak 18" S 65 W - 37'

(SEE OVER)



Wm G. PARRETT

b. Stone - m<sup>e</sup> "S 1/2" - Pin oak 40" S 40 1/2 W 46' -  
 Beech 26" N 4 1/2 E 65'  
 Survey by Mat. Zenzel - E.C. Siler Dep  
 June 1, 1860

c. Stone m<sup>e</sup> "X" Pin oak, stump 26 S 37 W 11 -  
 B. Wal. N 3 1/2 W 53'

d. Stone m<sup>e</sup> "X" - B. Wal. S 17 1/2 W 31 1/2 - B. Wal S 1 1/2 E 40'  
 B. W. stump N E 30.95'

e. Stone - Hickory 8" E 9.5' - Beech 5" SE 17.0' -  
 Beech 14" 20' 6" - Granite Stone 2.0'