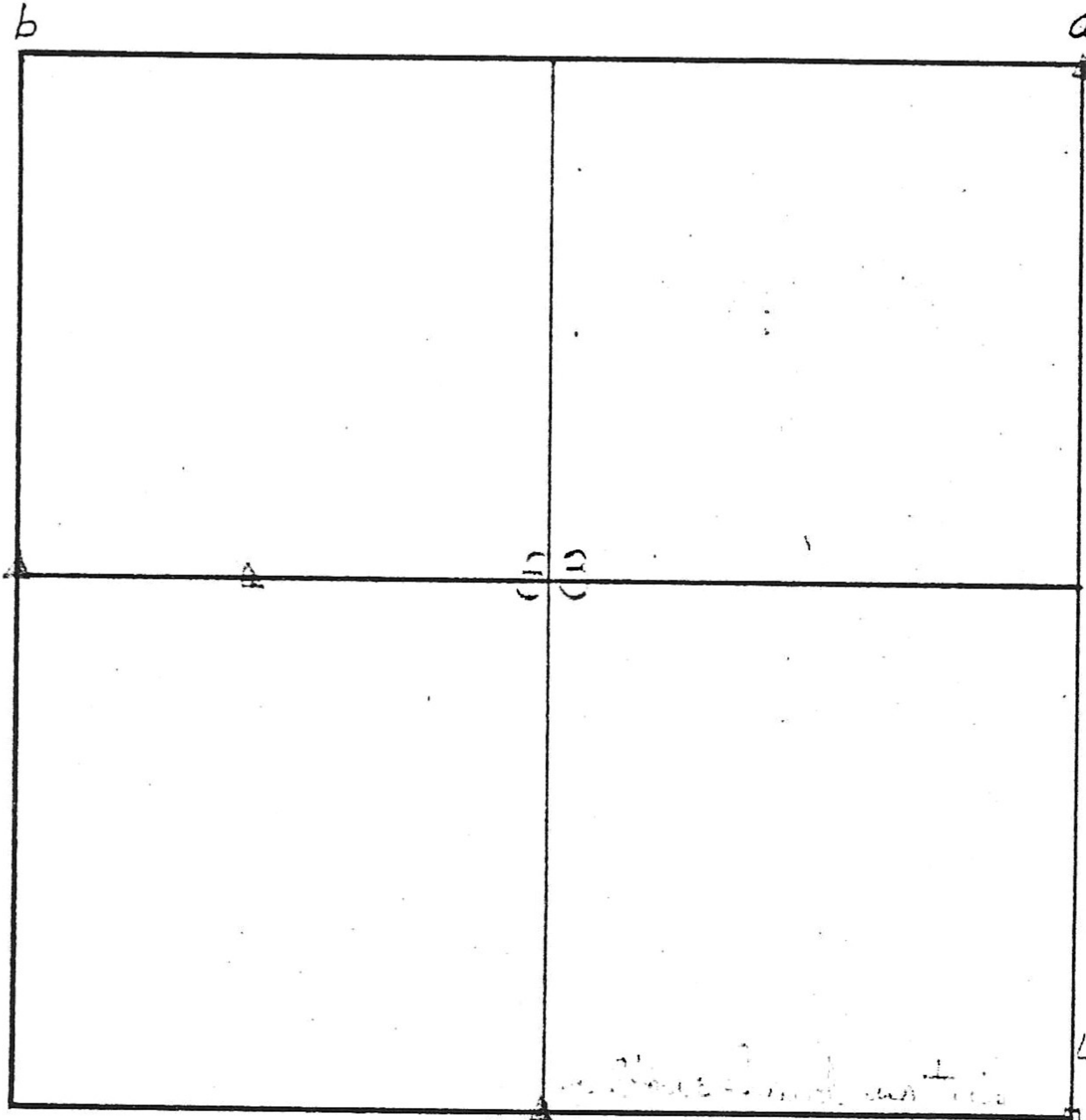


33-17-1



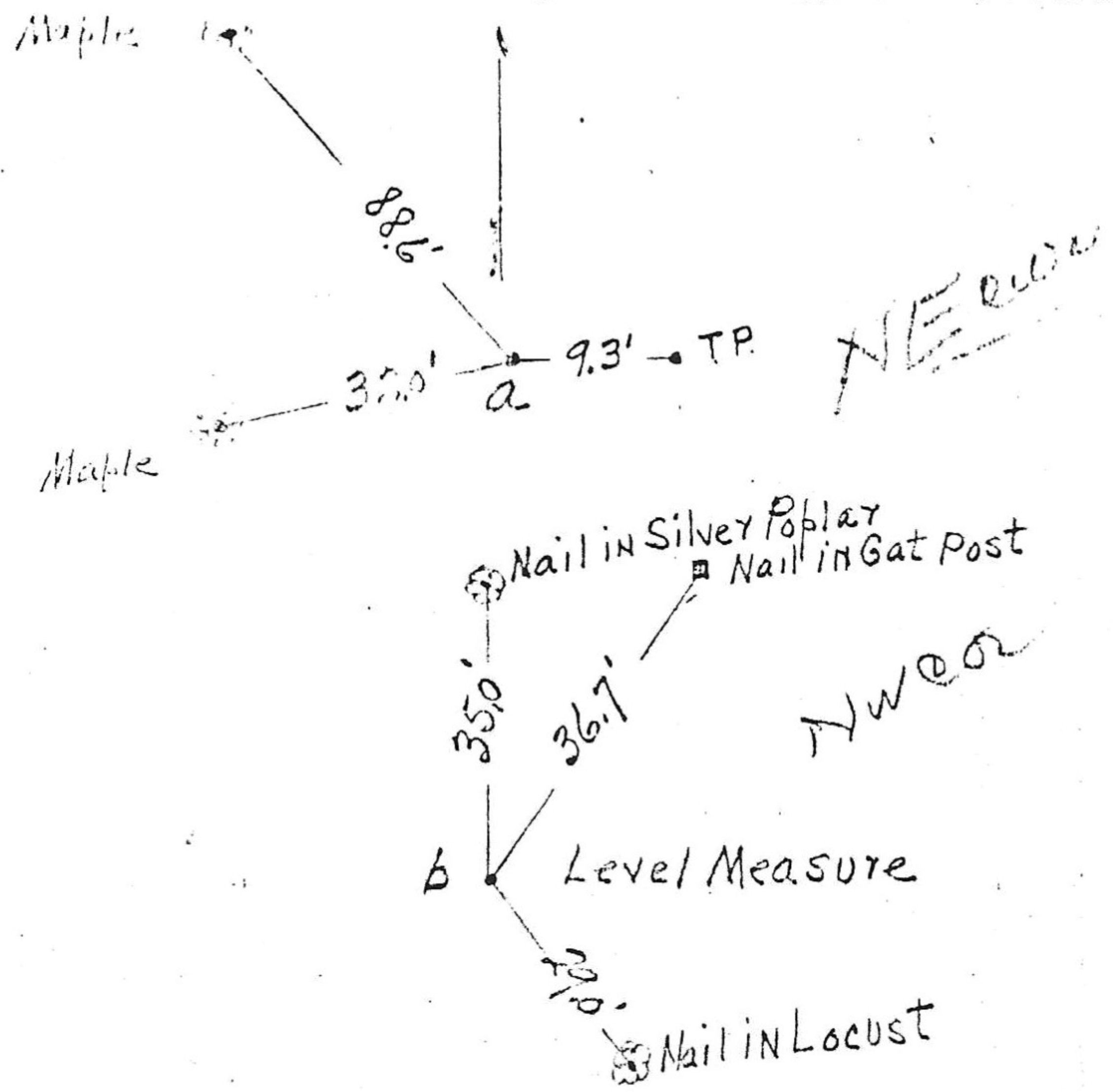
Stone witness
 by Isaac Coulter
 set cor. 20' E and
 11' N - here cor
 22' NE at end of
 driveway

Stone @ W 1/4 Cor Witnessed
 by Kuckberry 2" E 37.3
 Kuckberry 8" N 37.7
 Stone @ S 1/4 Cor NW 1/4
 Witnessed by
 with corner 3.7.8'
 Cone. fence post W 10.2

2652.5
 1190 to E State Highway
 199.4 to E
 4-18-9

SEE TIES OVER

L. Nelson Survey
 Stone found
 peg set witness
 by Edm 24" N. 11
 19.8' and near
 Tree S.E. 24.2
 E. 198 peg set f
 N.E. Cor. 4-18-9
 Witnessed by
 blazed trees



P-4-20-4-4

Survey by Jas Henderson 1875

" " RAP 6/17/07

" " NSP

" " " Road — #32

" " " Ant Lots H-3

" " " Perryville Corp H-15

— & Myers E-118

OK-E —