

VIGO COUNTY, IND. "MONUMENT RECORD"

OF

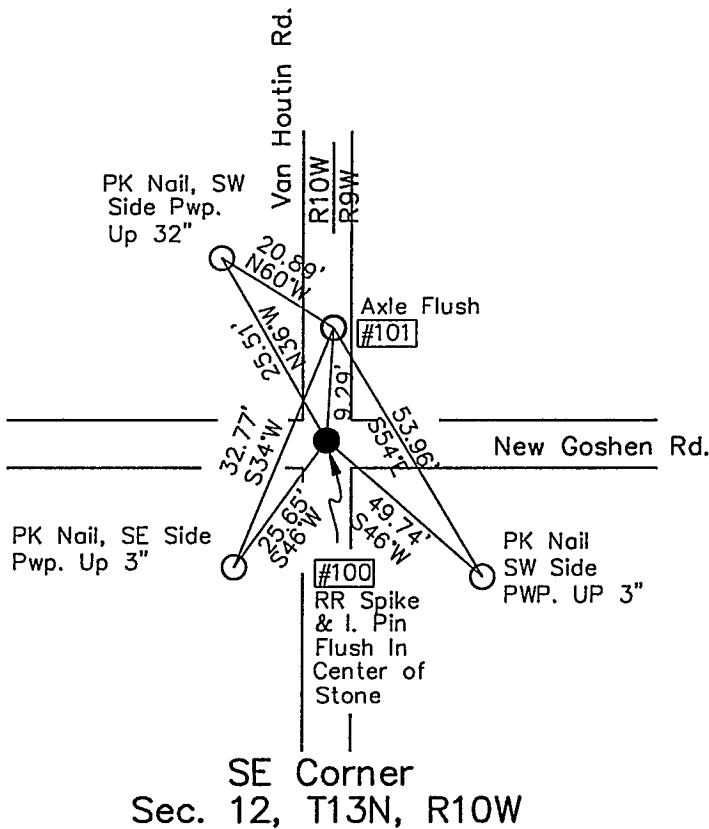
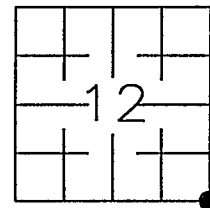
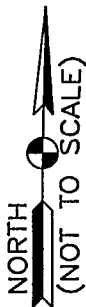
LAND SURVEY MONUMENTS SITUATED IN SECTION 12, TOWNSHIP 13 NORTH

RANGE 10 WEST, OF THE 2nd PRINCIPAL MERIDIAN, VIGO

COUNTY, INDIANA

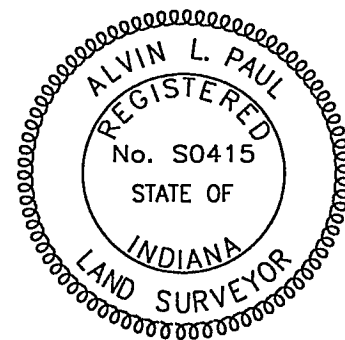
MONUMENT DESCRIPTION AND REMARKS: RR SPIKE & IRON PIN FLUSH IN CENTER OF STONE

RECOVERY TIE DRAWING



100 = Point No.

Alvin L. Paul 3-4-97



SPACE RESERVED FOR
RECORDING OFFICER

[Signature]
DATE FILED 3/12/97