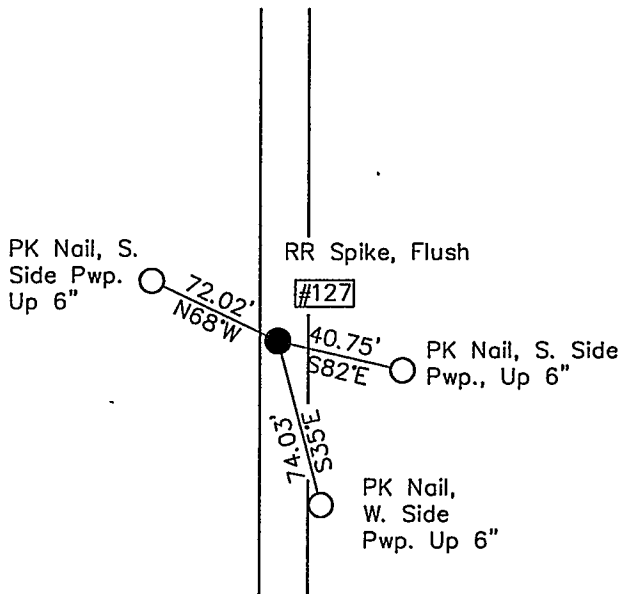
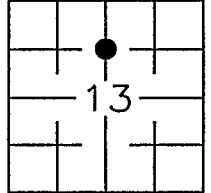
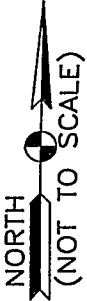


**VERMILLION COUNTY, IND.  
"MONUMENT RECORD"  
OF**

LAND SURVEY MONUMENTS SITUATED IN SECTION 13, TOWNSHIP 14 NORTH,  
RANGE 10 WEST, OF THE 2 ND PRINCIPAL MERIDIAN, VERMILLION  
COUNTY, INDIANA

MONUMENT DESCRIPTION AND REMARKS: RR SPIKE, FLUSH

RECOVERY TIE DRAWING



1/4, 1/4 Corner  
Sec. 13, T14N, R10W



127 = Point No.

*Alvin L. Paul* 3-4-97

STATE OF \_\_\_\_\_  
COUNTY OF \_\_\_\_\_ SS

I, \_\_\_\_\_, HEREBY  
CERTIFY THAT THIS DOCUMENT WAS PREPARED  
UNDER MY DIRECTION IN ACCORDANCE WITH  
IND. CODE 36-2-12-11-(D)-(3) AND THE ABOVE  
DATA IS GIVEN UNDER MY HAND AND SEAL

THIS \_\_\_\_\_ DAY OF \_\_\_\_\_, 19 \_\_\_\_\_ A.D.

INDIANA REGISTERED LAND SURVEYOR NO. \_\_\_\_\_

OR \_\_\_\_\_  
UNITED STATES GOVERNMENT AGENCY

TITLE

SPACE RESERVED FOR  
RECORDING OFFICER

*John W. [Signature]*  
DATE FILED 3/12/97