

VERMILLION COUNTY, IND.  
**"MONUMENT RECORD"**  
 OF

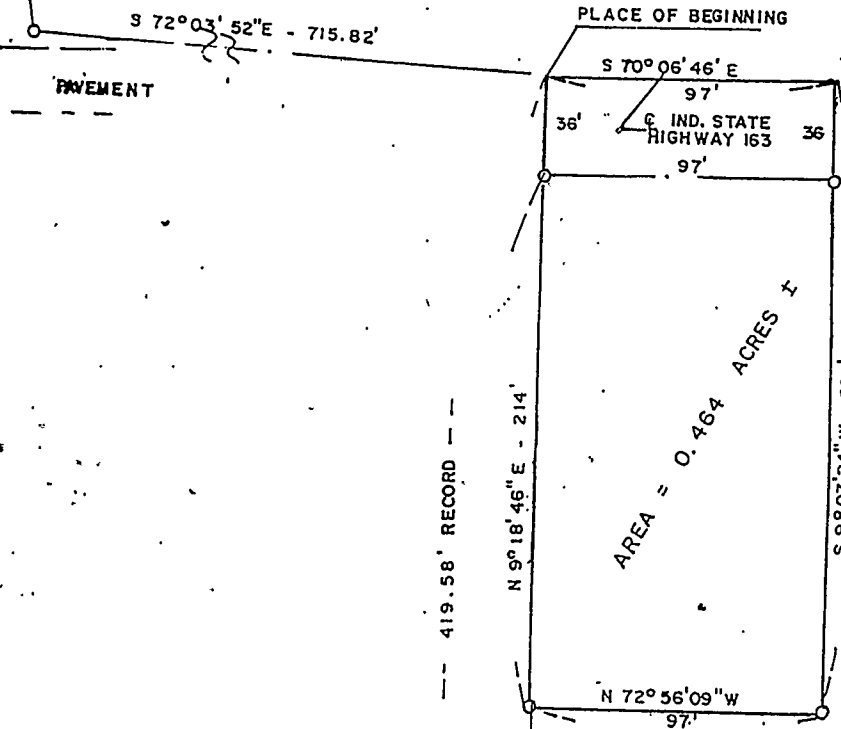
LAND SURVEY MONUMENTS SITUATED IN SECTION 14, TOWNSHIP 14N,  
 RANGE 10W, OF THE 2 PRINCIPAL MERIDIAN,  
 COUNTY, INDIANA

MONUMENT DESCRIPTION AND REMARKS: Iron Pipe w/IRLS Cap Found NW corner  
NE 1/4 Plat of Survey By: Charles J. Becher 5/6/94  
see: Green Map Cabinet Drawer #1 or Survey Record / pg 328

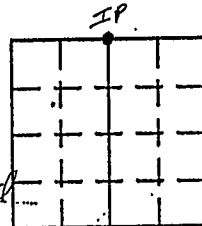
RECOVERY TIE DRAWING

NORTH  
 (NOT TO SCALE)

IRON PIPE (W/IRLS CAP) FOUND  
 NW CORNER NE 1/4  
 SEC. 14-14-10



FEE \$9.00 Pd.



STATE OF \_\_\_\_\_  
 COUNTY OF \_\_\_\_\_ SS

I, \_\_\_\_\_, HEREBY  
 CERTIFY THAT THIS DOCUMENT WAS PREPARED  
 UNDER MY DIRECTION IN ACCORDANCE WITH  
 IND. CODE 36-2-12-11-(D)-(3) AND THE ABOVE  
 DATA IS GIVEN UNDER MY HAND AND SEAL

THIS \_\_\_\_\_ DAY OF \_\_\_\_\_, 19 \_\_\_\_\_ A.D.

INDIANA REGISTERED LAND SURVEYOR NO. \_\_\_\_\_

OR \_\_\_\_\_  
 UNITED STATES GOVERNMENT AGENCY

TITLE

SPACE RESERVED FOR  
 RECORDING OFFICER

DATE FILED \_\_\_\_\_

