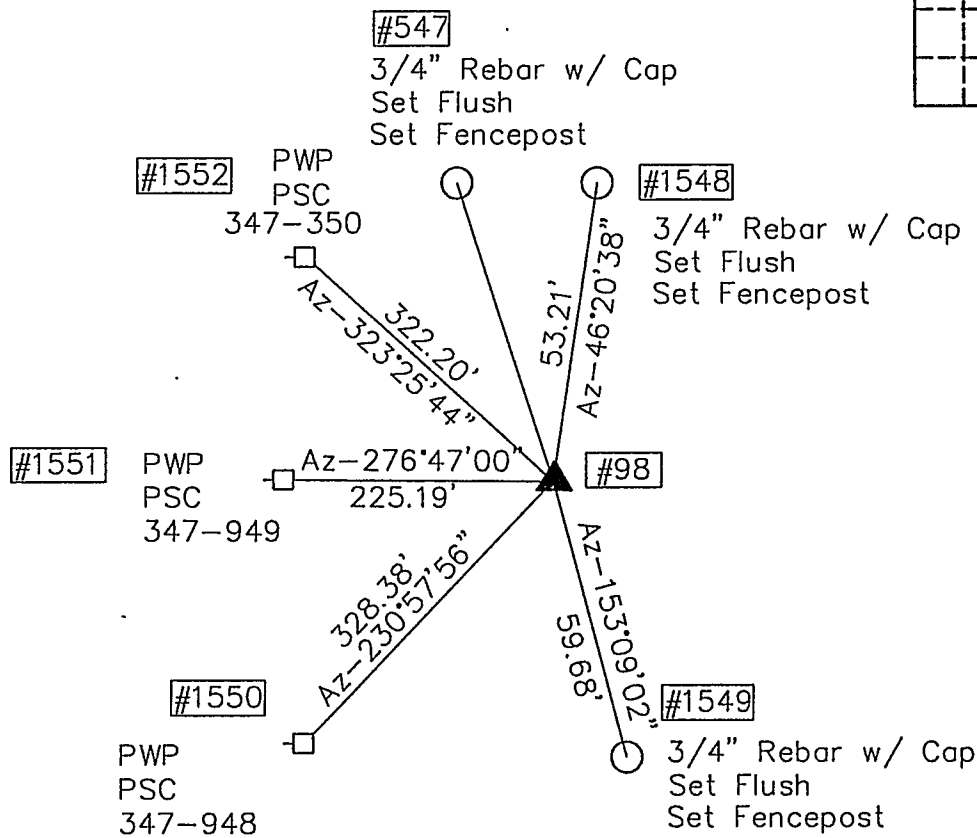
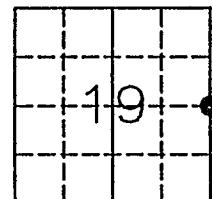
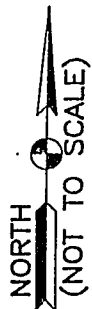


VIGO COUNTY, IND.
"MONUMENT RECORD"
OF

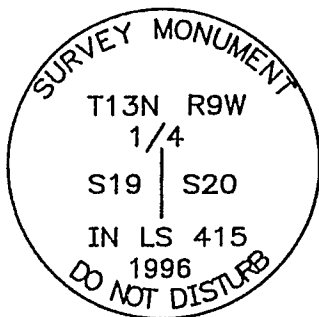
LAND SURVEY MONUMENTS SITUATED IN SECTION 19, TOWNSHIP 14 NORTH,
 RANGE 10 WEST, OF THE 2nd PRINCIPAL MERIDIAN, VIGO
 COUNTY, INDIANA

MONUMENT DESCRIPTION AND REMARKS: 1" IRON PIN WITH 5/8" HOLE AT TOP AND
BRASS PLUG, PUNCHED

RECOVERY TIE DRAWING



= Point No.



TOP OF MONUMENT
 3" BRASS DISC

NOTE: ALL AZIMUTHS NAD83 GRID
 INDIANA STATE PLANE WEST ZONE



Alvin L. Paul March 27, 1996