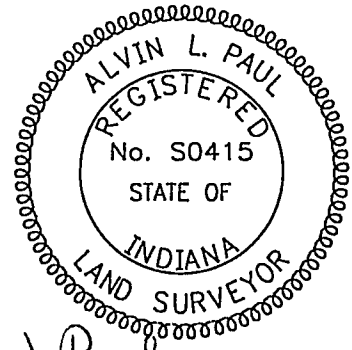
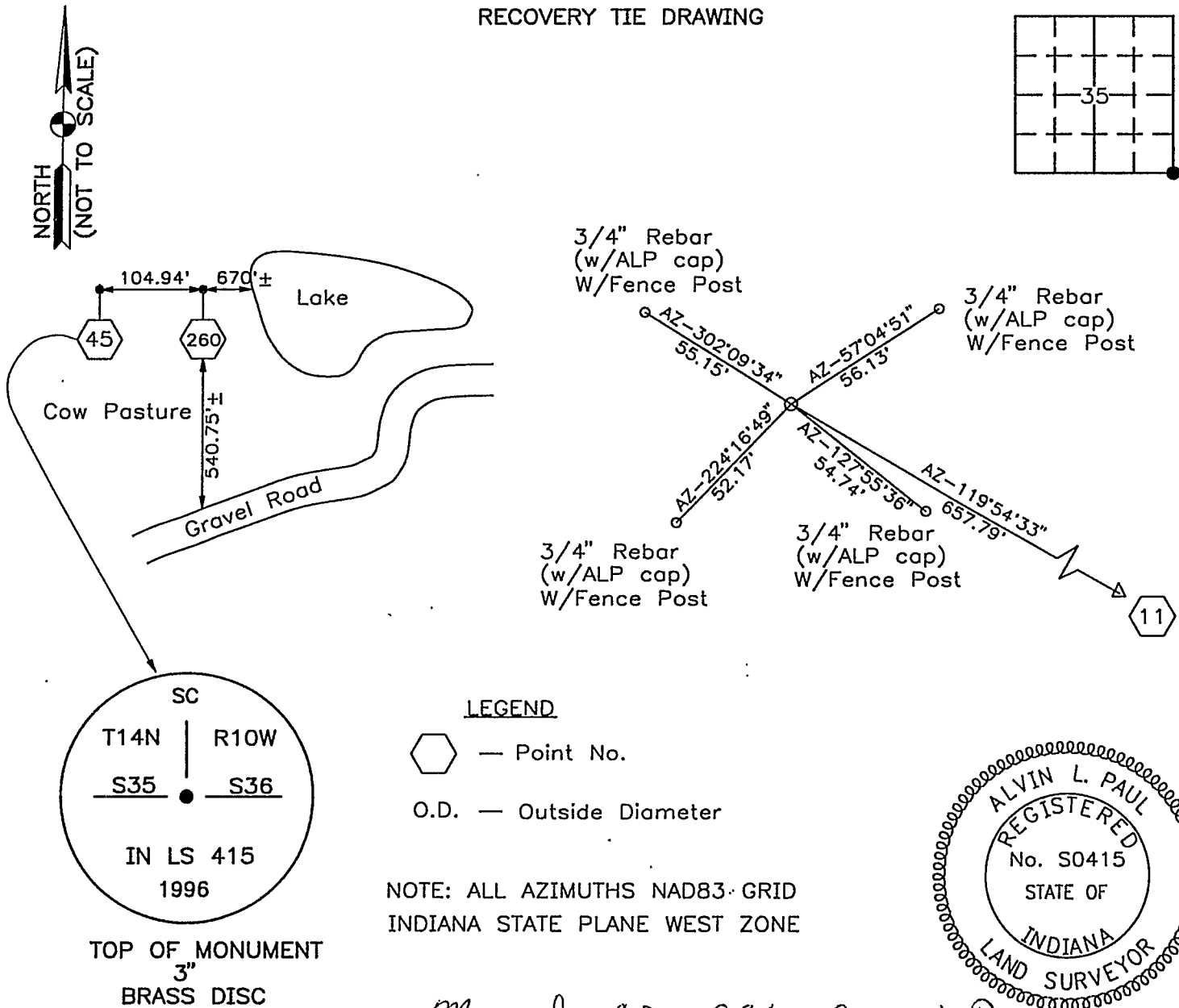


**VERMILLION COUNTY, IND.**  
**"MONUMENT RECORD"**  
**OF**

LAND SURVEY MONUMENTS SITUATED IN SECTION 35,36, TOWNSHIP 14 North,  
 RANGE 10 West, OF THE 2nd PRINCIPAL MERIDIAN, Vermillion - Vigo County Line,  
 COUNTY, INDIANA

MONUMENT DESCRIPTION AND REMARKS: 3" Brass Disc on top of 1 1/2" O.D. Pipe 4' Long  
With "T" Fence Post

RECOVERY TIE DRAWING



*March 27, 1996 Alvin L. Paul*

STATE OF \_\_\_\_\_  
 COUNTY OF \_\_\_\_\_ SS

I, \_\_\_\_\_, HEREBY CERTIFY THAT THIS DOCUMENT WAS PREPARED UNDER MY DIRECTION IN ACCORDANCE WITH IND. CODE 36-2-12-11-(D)-(3) AND THE ABOVE DATA IS GIVEN UNDER MY HAND AND SEAL

THIS \_\_\_\_\_ DAY OF \_\_\_\_\_, 19\_\_\_\_ A.D.

INDIANA REGISTERED LAND SURVEYOR NO. \_\_\_\_\_

OR \_\_\_\_\_ UNITED STATES GOVERNMENT AGENCY

\_\_\_\_\_ TITLE

SPACE RESERVED FOR RECORDING OFFICER  
*John. Evans*  
 DATE FILED 3/12/97