

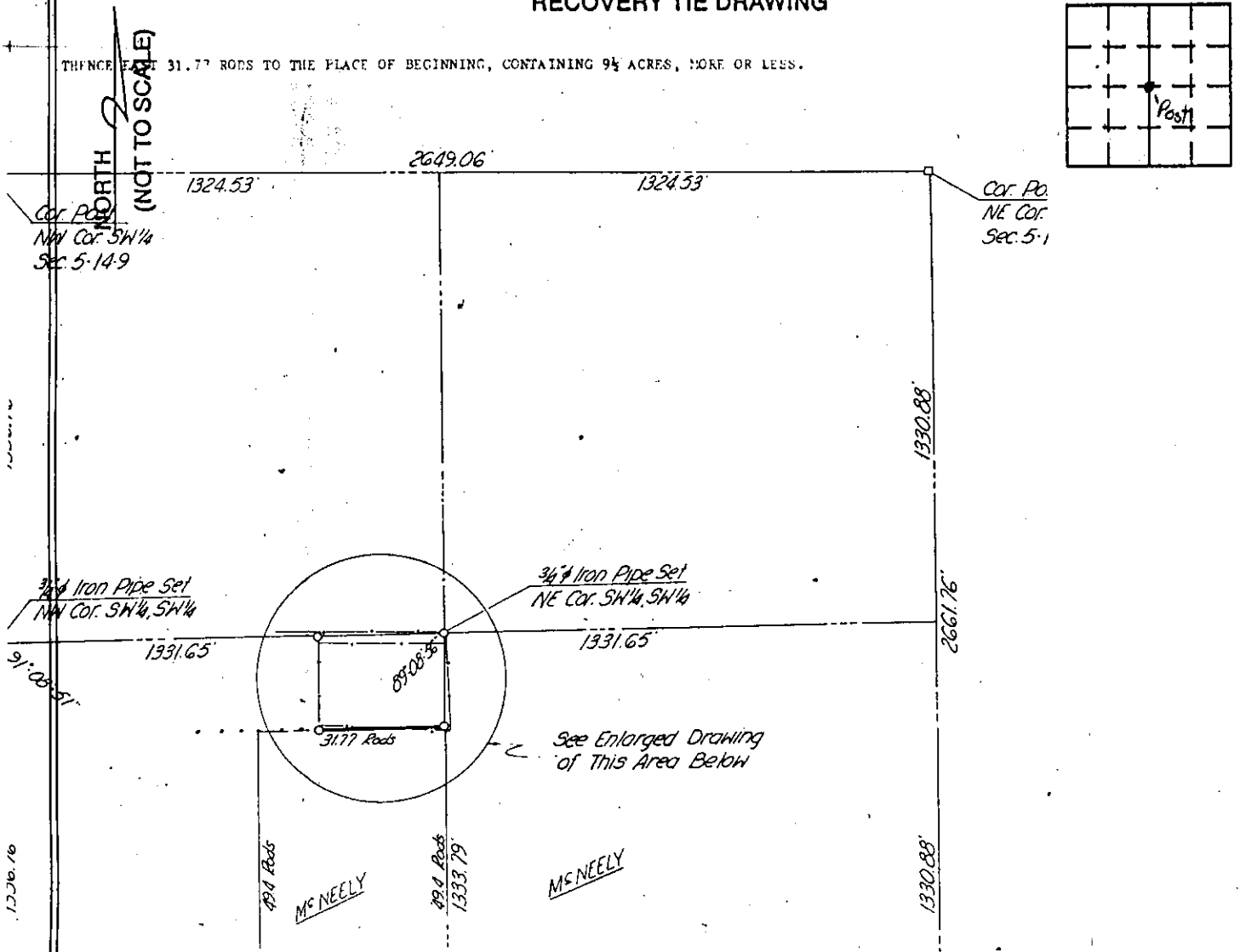
VERMILLION COUNTY, IND.  
"MONUMENT RECORD"  
OF

LAND SURVEY MONUMENTS SITUATED IN SECTION 5, TOWNSHIP 14N,  
RANGE 9W, OF THE 2 PRINCIPAL MERIDIAN,  
COUNTY, INDIANA

MONUMENT DESCRIPTION AND REMARKS: Corner Post NE corner SW 1/4  
McNeely By: Dale E. Francis 6/19/74 #2084  
see: Plat Book 1 pg 49

RECOVERY TIE DRAWING

THENCE EAST 31.77 RODS TO THE PLACE OF BEGINNING, CONTAINING 9 1/4 ACRES, MORE OR LESS.



STATE OF \_\_\_\_\_  
COUNTY OF \_\_\_\_\_ SS

I, \_\_\_\_\_, HEREBY  
CERTIFY THAT THIS DOCUMENT WAS PREPARED  
UNDER MY DIRECTION IN ACCORDANCE WITH  
IND. CODE 36-2-12-11-(D)-(3) AND THE ABOVE  
DATA IS GIVEN UNDER MY HAND AND SEAL

THIS \_\_\_\_\_ DAY OF \_\_\_\_\_, 19 \_\_\_\_\_ A.D.

INDIANA REGISTERED LAND SURVEYOR NO. \_\_\_\_\_

OR \_\_\_\_\_  
UNITED STATES GOVERNMENT AGENCY

TITLE \_\_\_\_\_

SPACE RESERVED FOR  
RECORDING OFFICER

DATE FILED \_\_\_\_\_

