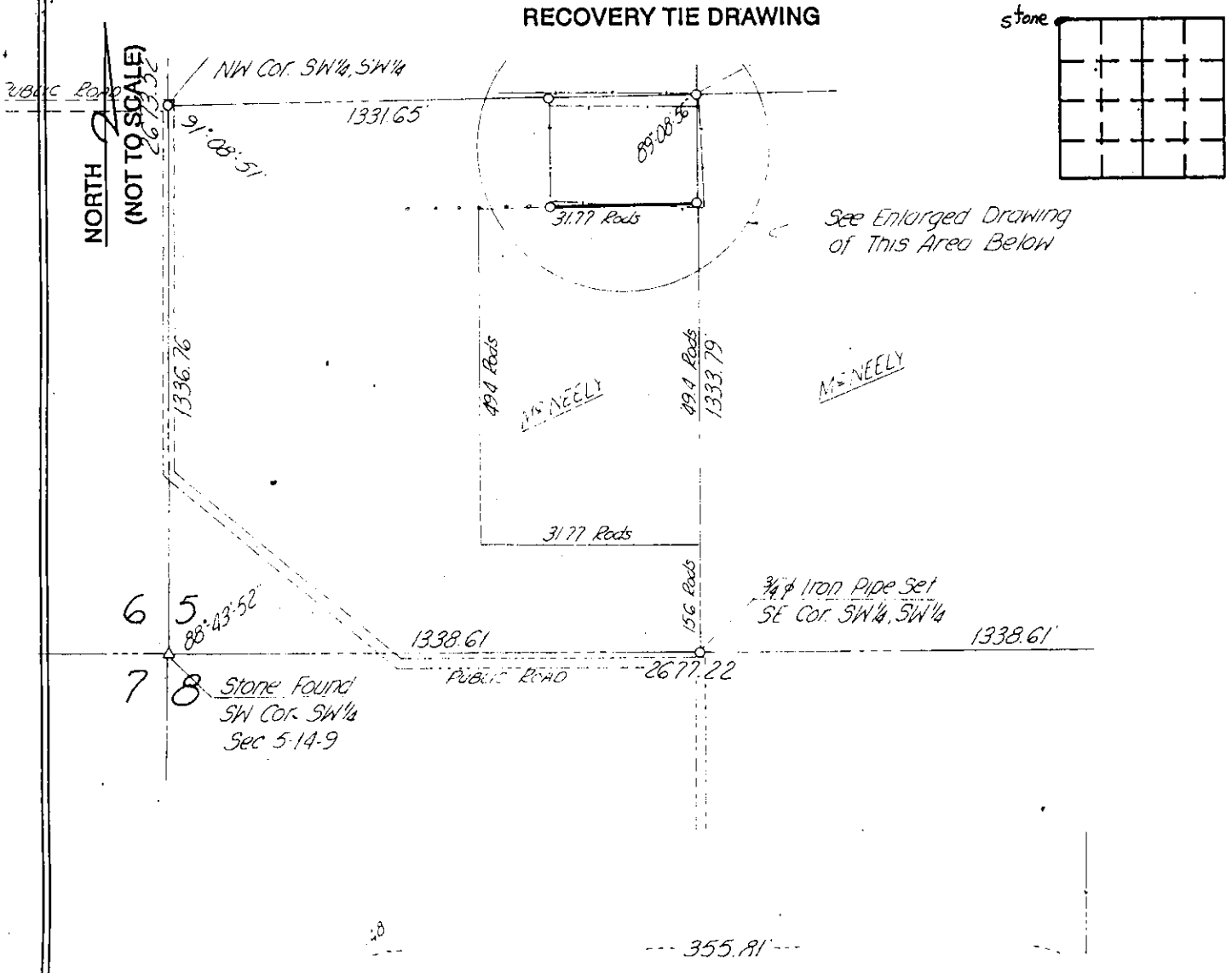


VERMILLION COUNTY, IND. "MONUMENT RECORD" OF

LAND SURVEY MONUMENTS SITUATED IN SECTION 8, TOWNSHIP 14N,
RANGE 9W, OF THE 2 PRINCIPAL MERIDIAN,
COUNTY, INDIANA

MONUMENT DESCRIPTION AND REMARKS: Stone Found NW corner NW 1/4
Plat Done By: Dale E. Francis 6/19/74 File # 3140
see: Green Map Cabinet Drawer #1



STATE OF _____
COUNTY OF _____ SS

I, _____, HEREBY
CERTIFY THAT THIS DOCUMENT WAS PREPARED
UNDER MY DIRECTION IN ACCORDANCE WITH
IND. CODE 36-2-12-11-(D)-(3) AND THE ABOVE
DATA IS GIVEN UNDER MY HAND AND SEAL

THIS _____ DAY OF _____, 19____ A.D.

INDIANA REGISTERED LAND SURVEYOR NO. _____

OR _____
UNITED STATES GOVERNMENT AGENCY

_____ TITLE

SPACE RESERVED FOR
RECORDING OFFICER

DATE FILED _____

SEAL