

# VERMILLION COUNTY, IND. "MONUMENT RECORD" OF

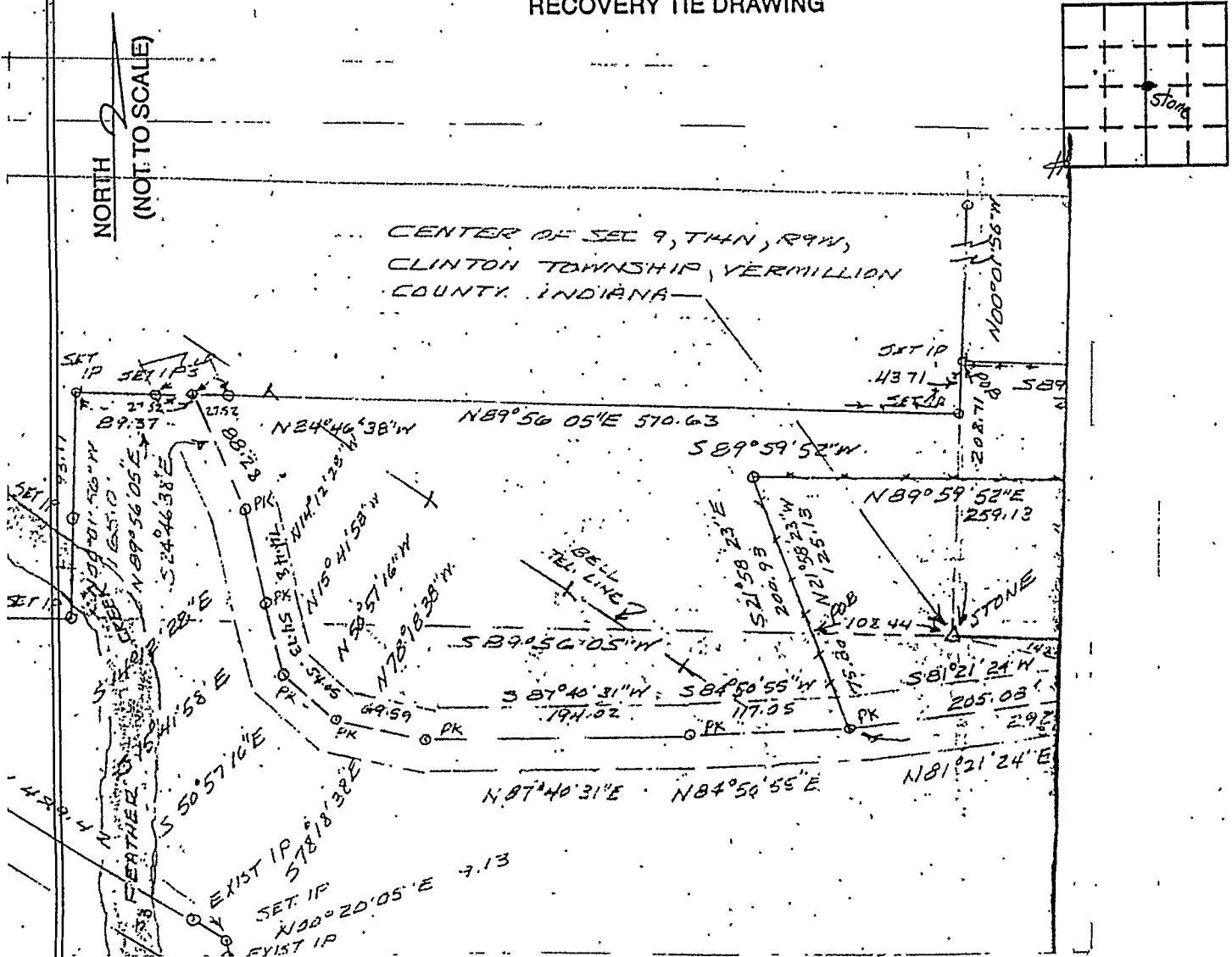
LAND SURVEY MONUMENTS SITUATED IN SECTION 9, TOWNSHIP 14N

RANGE 9W, OF THE 2 PRINCIPAL MERIDIAN,

COUNTY, INDIANA

MONUMENT DESCRIPTION AND REMARKS: Stone Found Center of Section Shirley Tasso Real Estate (Carrera Lands) By: W.T. Crowley Jr. see: Plat Book 1 pg. 83

### RECOVERY TIE DRAWING



STATE OF \_\_\_\_\_  
COUNTY OF \_\_\_\_\_ SS

I, \_\_\_\_\_, HEREBY  
CERTIFY THAT THIS DOCUMENT WAS PREPARED  
UNDER MY DIRECTION IN ACCORDANCE WITH  
IND. CODE 36-2-12-11-(D)-(3) AND THE ABOVE  
DATA IS GIVEN UNDER MY HAND AND SEAL

THIS \_\_\_\_\_ DAY OF \_\_\_\_\_, 19\_\_\_\_ A.D.

INDIANA REGISTERED LAND SURVEYOR NO. \_\_\_\_\_

OR \_\_\_\_\_  
UNITED STATES GOVERNMENT AGENCY

TITLE \_\_\_\_\_

SPACE RESERVED FOR  
RECORDING OFFICER

DATE FILED \_\_\_\_\_

