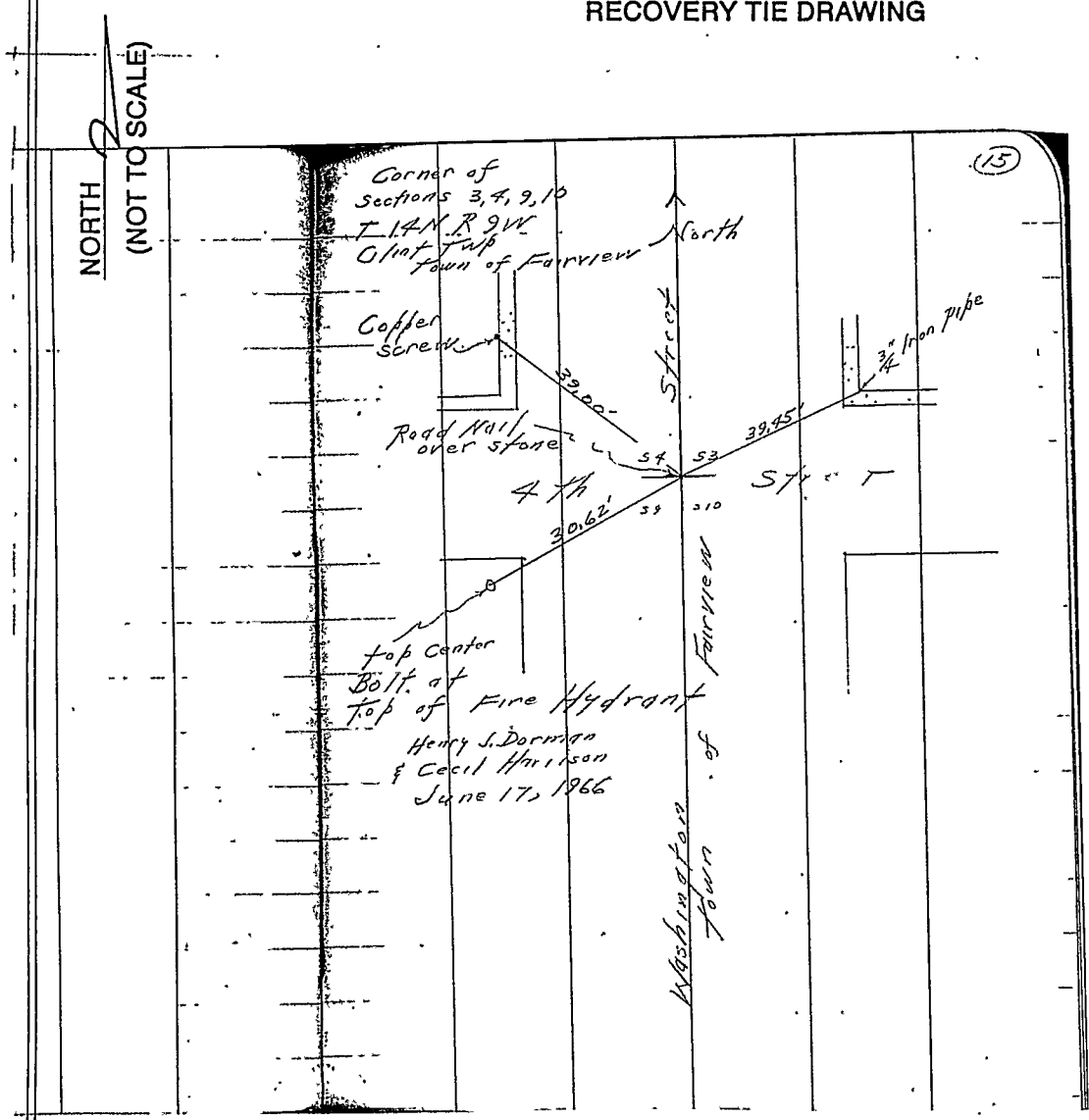
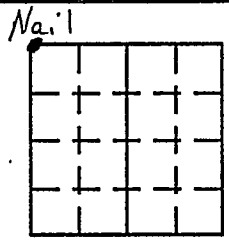


**VERMILLION COUNTY, IND.
"MONUMENT RECORD"
OF**

LAND SURVEY MONUMENTS SITUATED IN SECTION 10, TOWNSHIP 14N,
RANGE 9W, OF THE 2 PRINCIPAL MERIDIAN,
COUNTY, INDIANA

MONUMENT DESCRIPTION AND REMARKS: Road Nail over Stone Found NW corner
6/17/66 From: Brown Corner Stone Book By: Henry J. Dorman
see: Gray File Cabinet Drawer #2

RECOVERY TIE DRAWING



STATE OF _____
COUNTY OF _____ SS

I, _____, HEREBY
CERTIFY THAT THIS DOCUMENT WAS PREPARED
UNDER MY DIRECTION IN ACCORDANCE WITH
IND. CODE 36-2-12-11-(D)-(3) AND THE ABOVE
DATA IS GIVEN UNDER MY HAND AND SEAL

THIS _____ DAY OF _____, 19 _____ A.D.

INDIANA REGISTERED LAND SURVEYOR NO. _____

OR _____
UNITED STATES GOVERNMENT AGENCY

_____ TITLE

SPACE RESERVED FOR
RECORDING OFFICER

DATE FILED: _____

