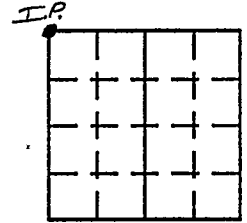


**VERMILLION COUNTY, IND.
"MONUMENT RECORD"
OF**

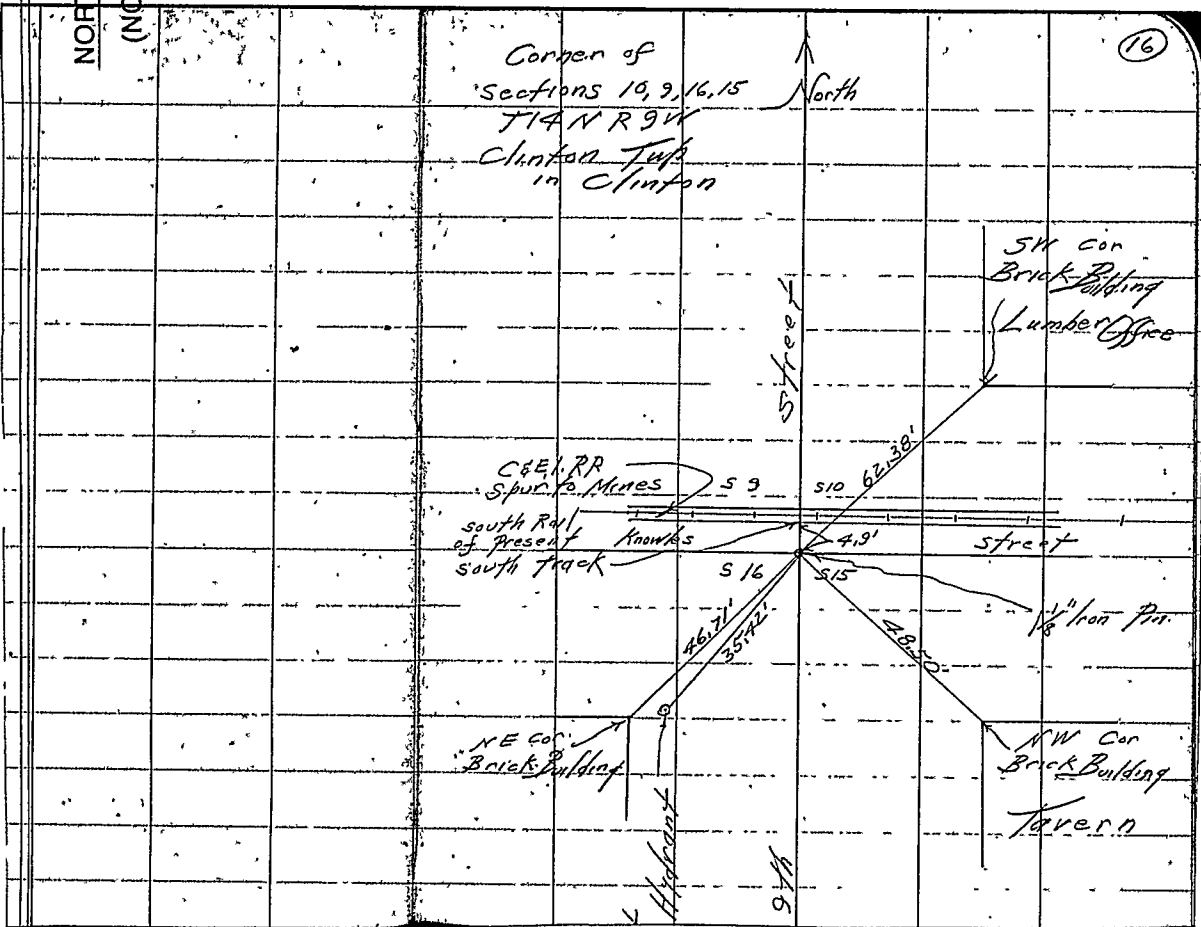
LAND SURVEY MONUMENTS SITUATED IN SECTION 15, TOWNSHIP 14N,
RANGE 9W, OF THE 2 PRINCIPAL MERIDIAN,
COUNTY, INDIANA

MONUMENT DESCRIPTION AND REMARKS: 1 1/8" Iron Pin Found NW corner
From: Pg 16 Brown Corner Stone Book By: Henry J. Dorman
See: Gray File Cabinet Drawer #2

RECOVERY TIE DRAWING



NORTH 2
(NOT TO SCALE)



STATE OF _____
COUNTY OF _____ SS

I, _____, HEREBY
CERTIFY THAT THIS DOCUMENT WAS PREPARED
UNDER MY DIRECTION IN ACCORDANCE WITH
IND. CODE 36-2-12-11-(D)-(3) AND THE ABOVE
DATA IS GIVEN UNDER MY HAND AND SEAL
THIS _____ DAY OF _____, 19 _____ A.D.

INDIANA REGISTERED LAND SURVEYOR NO. _____
OR _____
UNITED STATES GOVERNMENT AGENCY
TITLE _____

SPACE RESERVED FOR
RECORDING OFFICER
DATE FILED _____

