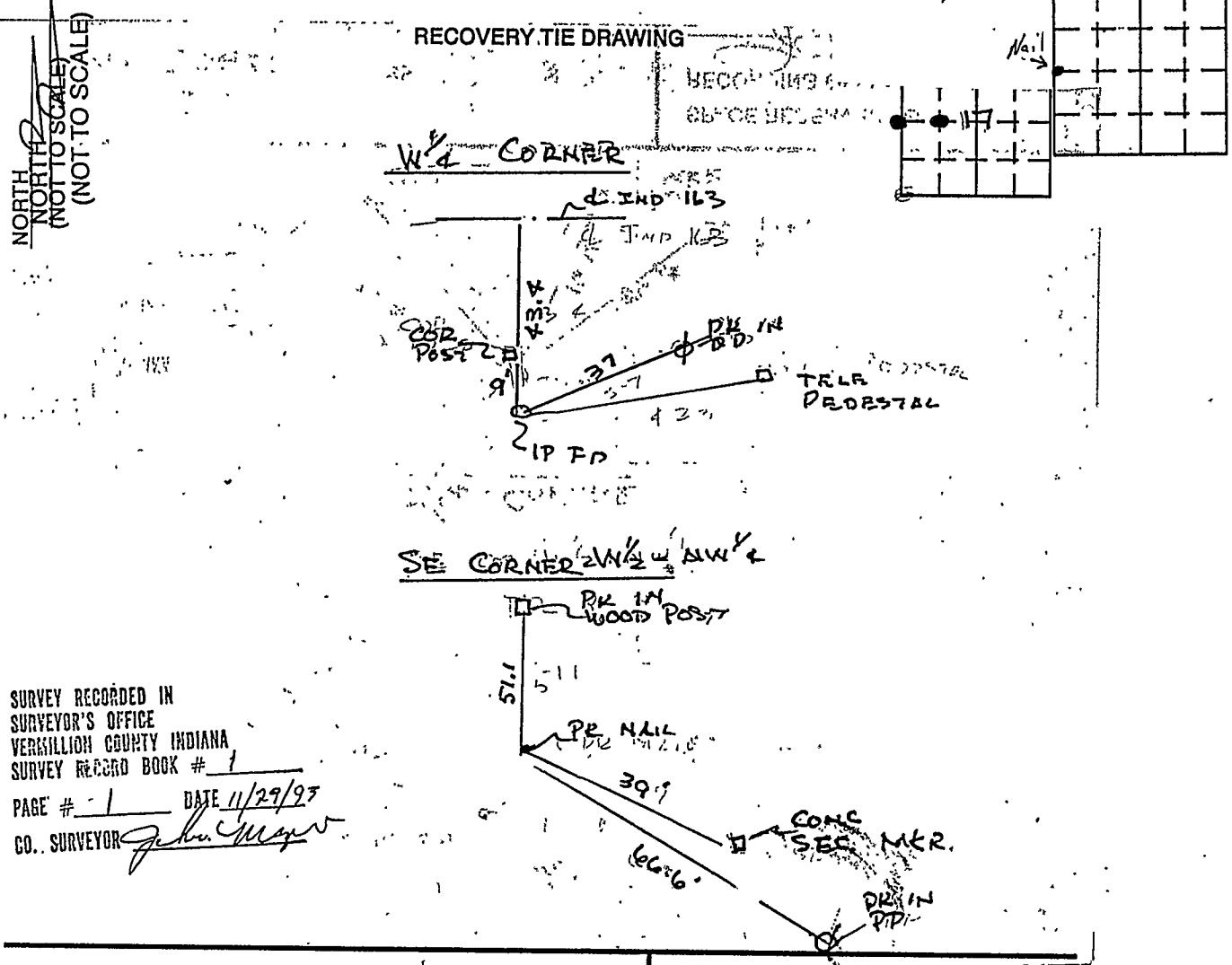


# VERMILLION COUNTY, IND. "MONUMENT RECORD" OF

LAND SURVEY MONUMENTS SITUATED IN SECTION 17, TOWNSHIP 14N,  
RANGE 9W, OF THE 2 PRINCIPAL MERIDIAN,  
COUNTY, INDIANA

MONUMENT DESCRIPTION AND REMARKS: Iron Pin Found AT W 1/4 corner + PK Nail  
AT S.E. 1/4 - W 1/2 NW 1/4 Copied from Monument Record By: Charles J. Becher  
6/9/93 See: Field Survey Book #2

### RECOVERY TIE DRAWING



SURVEY RECORDED IN  
SURVEYOR'S OFFICE  
VERMILLION COUNTY INDIANA  
SURVEY RECORD BOOK # 1  
PAGE # 1 DATE 11/29/93  
CO. SURVEYOR John M. [Signature]

STATE OF \_\_\_\_\_  
COUNTY OF \_\_\_\_\_ SS

I, \_\_\_\_\_, HEREBY  
CERTIFY THAT THIS DOCUMENT WAS PREPARED  
UNDER MY DIRECTION IN ACCORDANCE WITH  
IND. CODE 36-2-12-11-(D)-(3) AND THE ABOVE  
DATA IS GIVEN UNDER MY HAND AND SEAL

THIS \_\_\_\_\_ DAY OF \_\_\_\_\_, 19\_\_\_\_ A.D.

INDIANA REGISTERED LAND SURVEYOR NO. \_\_\_\_\_

OR \_\_\_\_\_  
UNITED STATES GOVERNMENT AGENCY

\_\_\_\_\_ TITLE

SPACE RESERVED FOR  
RECORDING OFFICER

DATE FILED \_\_\_\_\_

