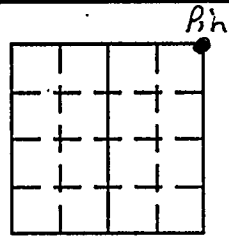
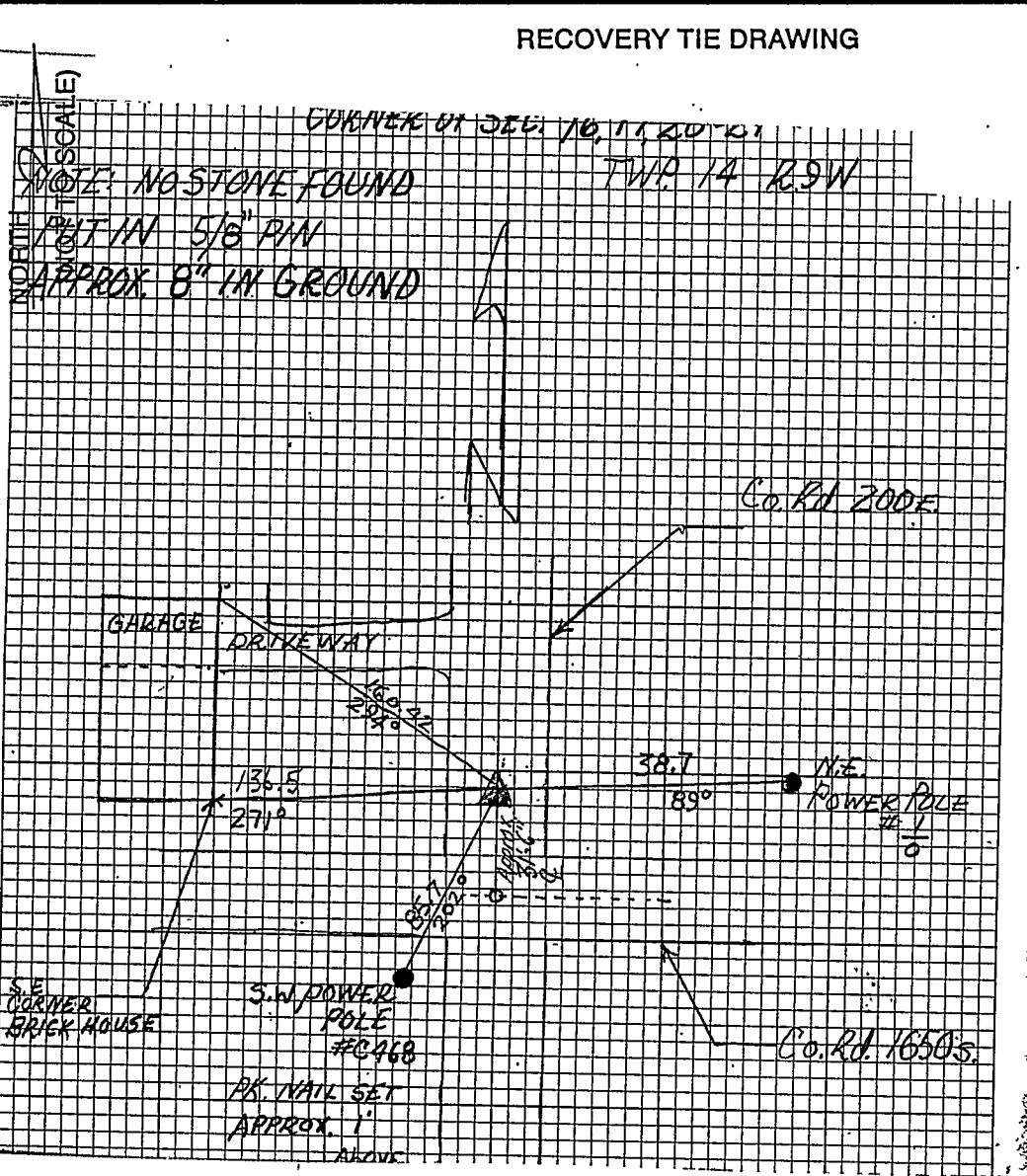


# VERMILLION COUNTY, IND. "MONUMENT RECORD" OF

LAND SURVEY MONUMENTS SITUATED IN SECTION 20, TOWNSHIP 14N,  
RANGE 9W, OF THE 2 PRINCIPAL MERIDIAN,  
COUNTY, INDIANA

MONUMENT DESCRIPTION AND REMARKS: 5/8" Pin Set NE corner  
From: Yellow Hard Back Field Book, By: John V. Major pg 6  
see: Gray File Cabinet Drawer #2 1989 Lietz

RECOVERY TIE DRAWING



STATE OF \_\_\_\_\_  
COUNTY OF \_\_\_\_\_ SS:  
I, \_\_\_\_\_, HEREBY  
CERTIFY THAT THIS DOCUMENT WAS PREPARED  
UNDER MY DIRECTION IN ACCORDANCE WITH  
IND. CODE 36-2-12-11-(D)-(3) AND THE ABOVE  
DATA IS GIVEN UNDER MY HAND AND SEAL  
THIS \_\_\_\_\_ DAY OF \_\_\_\_\_, 19\_\_\_\_ A.D.  
INDIANA REGISTERED LAND SURVEYOR NO. \_\_\_\_\_  
OR \_\_\_\_\_  
UNITED STATES GOVERNMENT AGENCY  
\_\_\_\_\_ TITLE

SPACE RESERVED FOR  
RECORDING OFFICER  
\_\_\_\_\_  
DATE FILED \_\_\_\_\_

