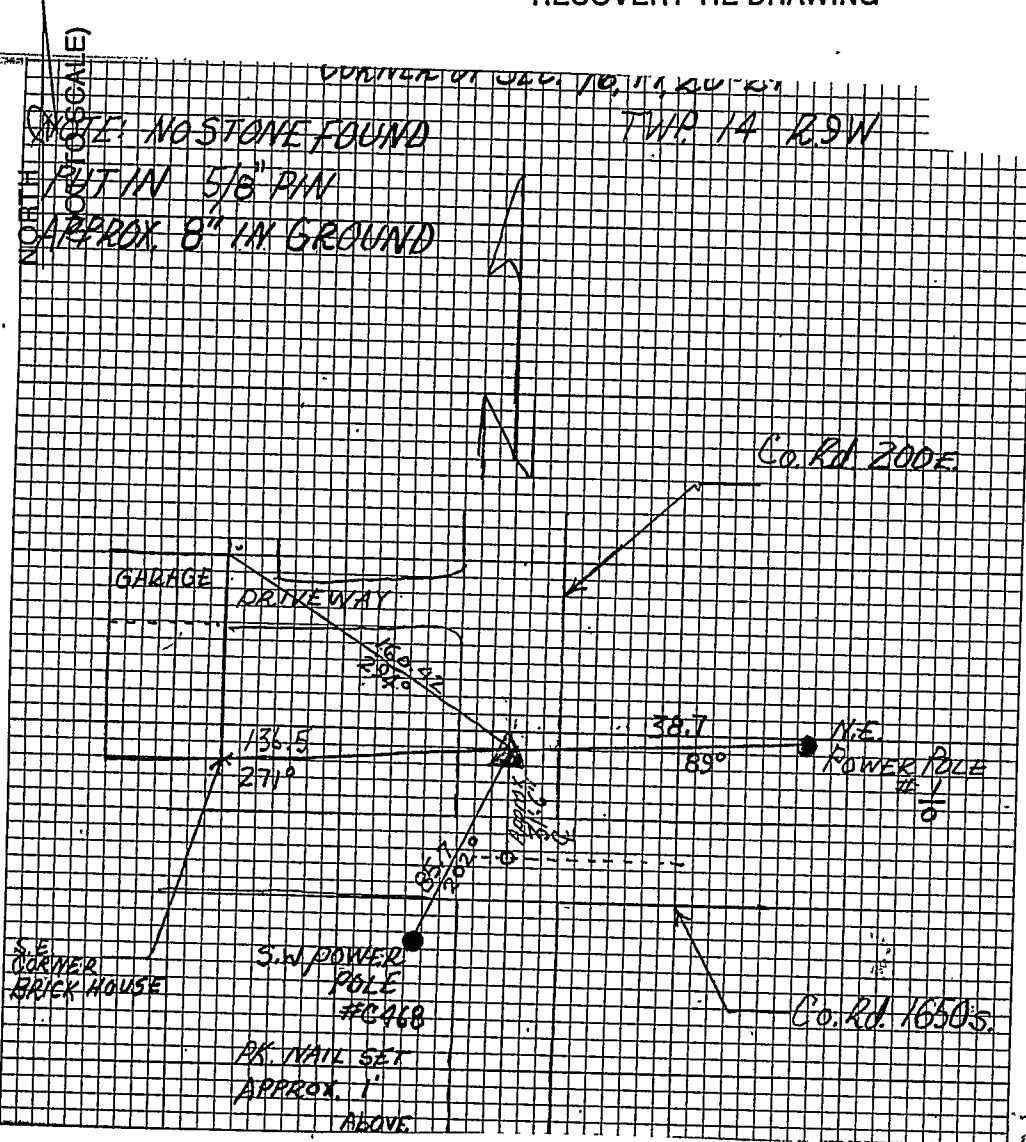
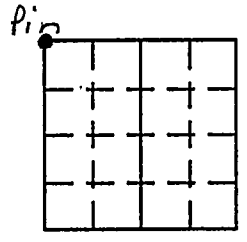


VERMILLION COUNTY, IND. "MONUMENT RECORD" OF

LAND SURVEY MONUMENTS SITUATED IN SECTION 21, TOWNSHIP 14N,
RANGE 9W, OF THE 2 PRINCIPAL MERIDIAN,
COUNTY, INDIANA

MONUMENT DESCRIPTION AND REMARKS: 1/8" Pin Set NW corner
From: Yellow Hard Back Field Book, By: John V. Major pg 6
see: Gray File Cabinet Drawer #2 1989 Lietz

RECOVERY TIE DRAWING



STATE OF _____
COUNTY OF _____ SS:

I, _____, HEREBY
CERTIFY THAT THIS DOCUMENT WAS PREPARED
UNDER MY DIRECTION IN ACCORDANCE WITH
IND. CODE 36-2-12-11-(D)-(3) AND THE ABOVE
DATA IS GIVEN UNDER MY HAND AND SEAL
THIS _____ DAY OF _____, 19____ A.D.

INDIANA REGISTERED LAND SURVEYOR NO. _____

OR _____
UNITED STATES GOVERNMENT AGENCY

TITLE

SPACE RESERVED FOR
RECORDING OFFICER

DATE FILED _____

