

VERMILLION COUNTY, IND. "MONUMENT RECORD" OF

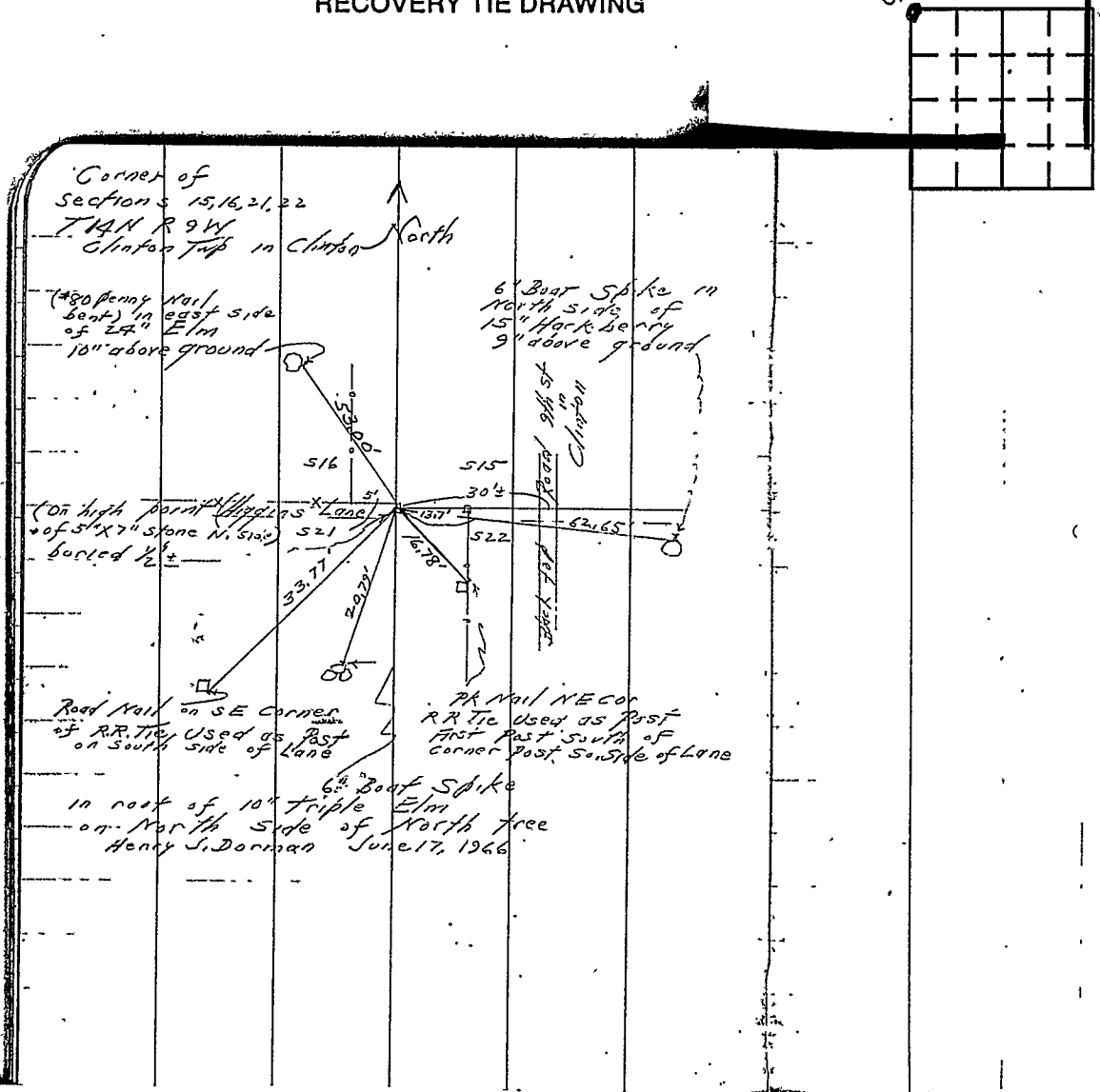
LAND SURVEY MONUMENTS SITUATED IN SECTION 22, TOWNSHIP 14N,
RANGE 9W, OF THE 2 PRINCIPAL MERIDIAN,
COUNTY, INDIANA

MONUMENT DESCRIPTION AND REMARKS: Stone Found NW corner
6/17/66 From: Brown Corner Stone Book By: Henry J. Dorman
see: Gray File Cabinet Drawer #2

RECOVERY TIE DRAWING

stone

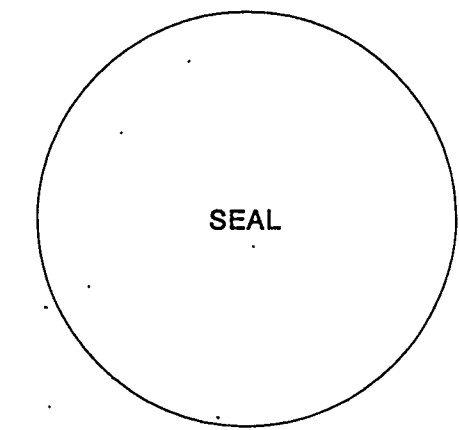
NORTH 2
(NOT TO SCALE)



STATE OF _____
COUNTY OF _____ SS

SPACE RESERVED FOR
RECORDING OFFICER

DATE FILED _____



I, _____, HEREBY
CERTIFY THAT THIS DOCUMENT WAS PREPARED
UNDER MY DIRECTION IN ACCORDANCE WITH
IND. CODE 36-2-12-11-(D)-(3) AND THE ABOVE
DATA IS GIVEN UNDER MY HAND AND SEAL

THIS _____ DAY OF _____, 19____ A.D.

INDIANA REGISTERED LAND SURVEYOR NO. _____

OR _____
UNITED STATES GOVERNMENT AGENCY

TITLE