

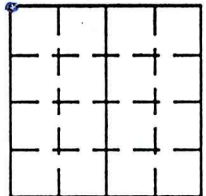
**VERMILLION COUNTY, IND.  
"MONUMENT RECORD"  
OF**

LAND SURVEY MONUMENTS SITUATED IN SECTION 31, TOWNSHIP 14W,  
RANGE 9W, OF THE 2<sup>nd</sup> PRINCIPAL MERIDIAN, Vermillion  
COUNTY, INDIANA

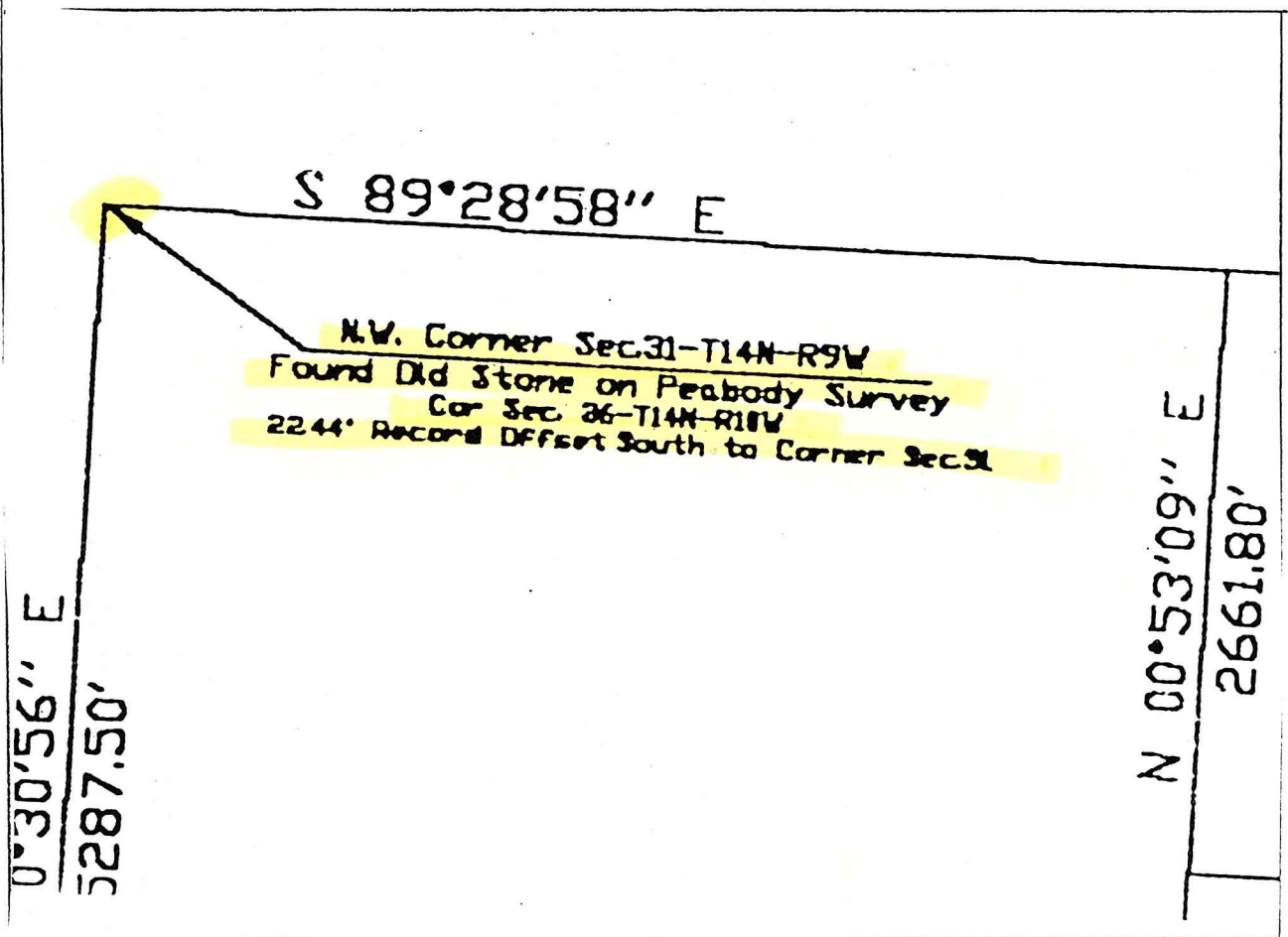
MONUMENT DESCRIPTION AND REMARKS: Keller Surveying Services for  
Dan Robertson Recorded Jan 8, 1998, Sur # 1, P. # 576  
Stone at N.W. Corner

RECOVERY TIE DRAWING

Stone



NORTH 2  
(NOT TO SCALE)



STATE OF \_\_\_\_\_  
COUNTY OF \_\_\_\_\_ SS

I, John R. Keller, HEREBY  
CERTIFY THAT THIS DOCUMENT WAS PREPARED  
UNDER MY DIRECTION IN ACCORDANCE WITH  
IND. CODE 36-2-12-11-(D)-(3) AND THE ABOVE  
DATA IS GIVEN UNDER MY HAND AND SEAL  
THIS \_\_\_\_\_ DAY OF \_\_\_\_\_, 19\_\_\_\_ A.D.

INDIANA REGISTERED LAND SURVEYOR NO. \_\_\_\_\_  
OR LS 80920000  
UNITED STATES GOVERNMENT AGENCY

TITLE

SPACE RESERVED FOR  
RECORDING OFFICER

DATE FILED \_\_\_\_\_

