

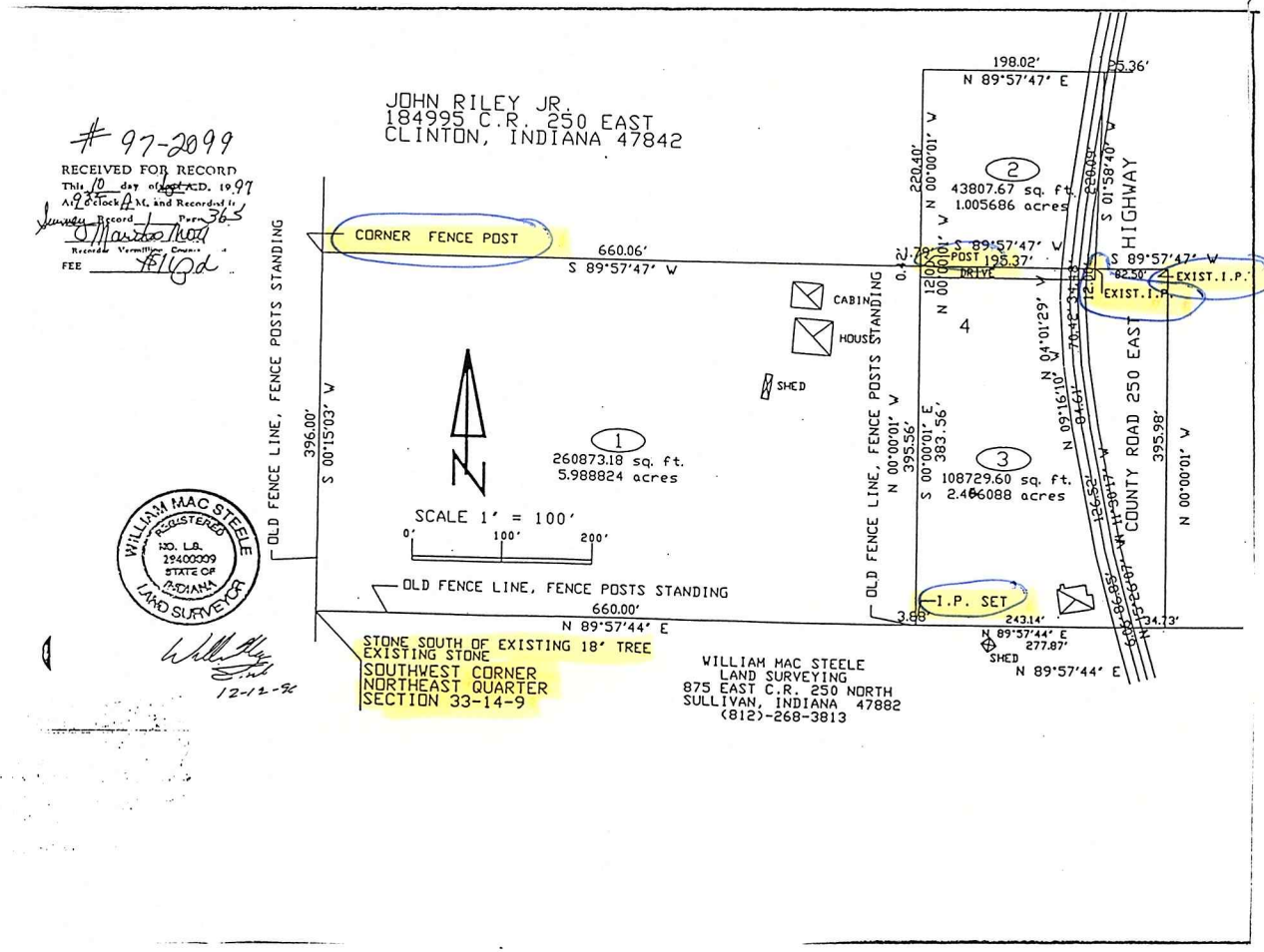
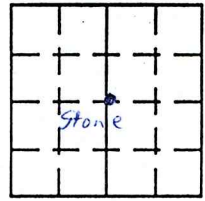
# VERMILLION COUNTY, IND. "MONUMENT RECORD" OF

LAND SURVEY MONUMENTS SITUATED IN SECTION 33, TOWNSHIP 14W,  
RANGE 9W, OF THE 2<sup>nd</sup> PRINCIPAL MERIDIAN, Vermillion  
COUNTY, INDIANA

MONUMENT DESCRIPTION AND REMARKS: William Mac Steele for  
John Riley Jr Recorded Sept. 10, 1997 Sur. #1, P. 365  
Stone at SW corner NE 1/4, Corner Fence Post, Post, Exist. I.P. (2)  
+ I.P. Set

## RECOVERY TIE DRAWING

NORTH  
(NOT TO SCALE)



# 97-2099  
RECEIVED FOR RECORD  
This 10 day of Sept. 1997  
At 2 o'clock P.M. and Recorded in  
Vermillion County, Indiana  
Book 365  
Page 365  
FEE \$10.00



*William Mac Steele*  
12-12-94

STATE OF \_\_\_\_\_  
COUNTY OF \_\_\_\_\_ SS

I, William Mac Steele, HEREBY  
CERTIFY THAT THIS DOCUMENT WAS PREPARED  
UNDER MY DIRECTION IN ACCORDANCE WITH  
IND. CODE 36-2-12-11-(D)-(3) AND THE ABOVE  
DATA IS GIVEN UNDER MY HAND AND SEAL

THIS \_\_\_\_\_ DAY OF \_\_\_\_\_, 19 \_\_\_\_\_ A.D.

\_\_\_\_\_

INDIANA REGISTERED LAND SURVEYOR NO. \_\_\_\_\_

OR \_\_\_\_\_  
UNITED STATES GOVERNMENT AGENCY

\_\_\_\_\_

TITLE

SPACE RESERVED FOR  
RECORDING OFFICER

\_\_\_\_\_

DATE FILED \_\_\_\_\_

