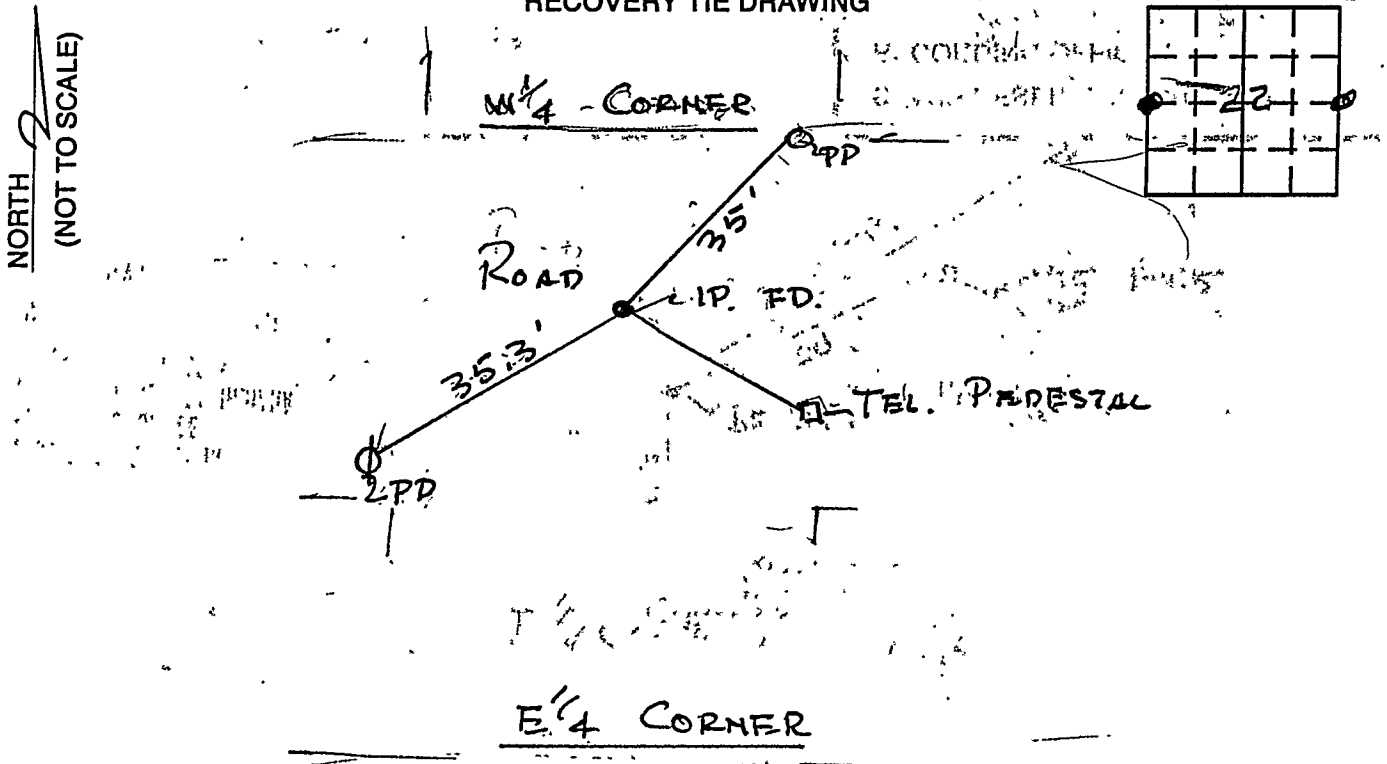


# VERMILLION COUNTY, IND. "MONUMENT RECORD" OF

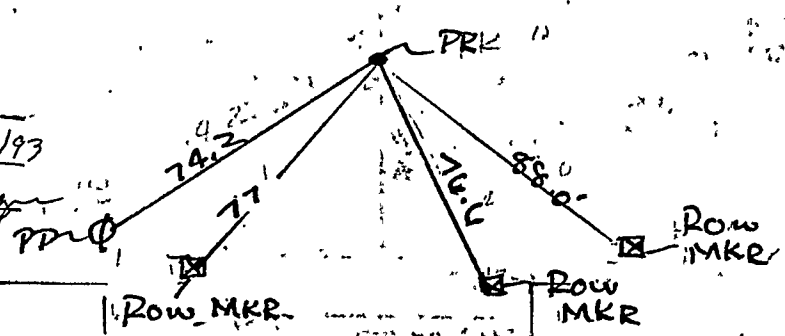
LAND SURVEY MONUMENTS SITUATED IN SECTION 22, TOWNSHIP 15 N,  
RANGE 10 W, OF THE 2ND PRINCIPAL MERIDIAN, VERMILLION  
COUNTY, INDIANA

MONUMENT DESCRIPTION AND REMARKS: FOUND 5/8" IRON PIN AT W 1/4  
CORNER AND FOUND PK NAIL IN PAVEMENT AT  
E 1/4 CORNER

RECOVERY TIE DRAWING



SURVEY RECORDED IN  
SURVEYOR'S OFFICE  
VERMILLION COUNTY INDIANA  
MONUMENT RECORD BOOK # 1  
PAGE # 3 DATE 11/29/93  
CD SURVEYOR John May



STATE OF ILL  
COUNTY OF EDGAR SS  
I, CHARLES J. BECHER, HEREBY  
CERTIFY THAT THIS DOCUMENT WAS PREPARED  
UNDER MY DIRECTION IN ACCORDANCE WITH  
IND. CODE 36-2-12-11-(D)-(3) AND THE ABOVE  
DATA IS GIVEN UNDER MY HAND AND SEAL  
THIS 9 DAY OF JUNE, 19 93 A.D.  
Charles J. Becher  
INDIANA REGISTERED LAND SURVEYOR NO. 0094  
OR \_\_\_\_\_  
UNITED STATES GOVERNMENT AGENCY

SPACE RESERVED FOR  
RECORDING OFFICER  
John May  
DATE FILED 11/29/93

