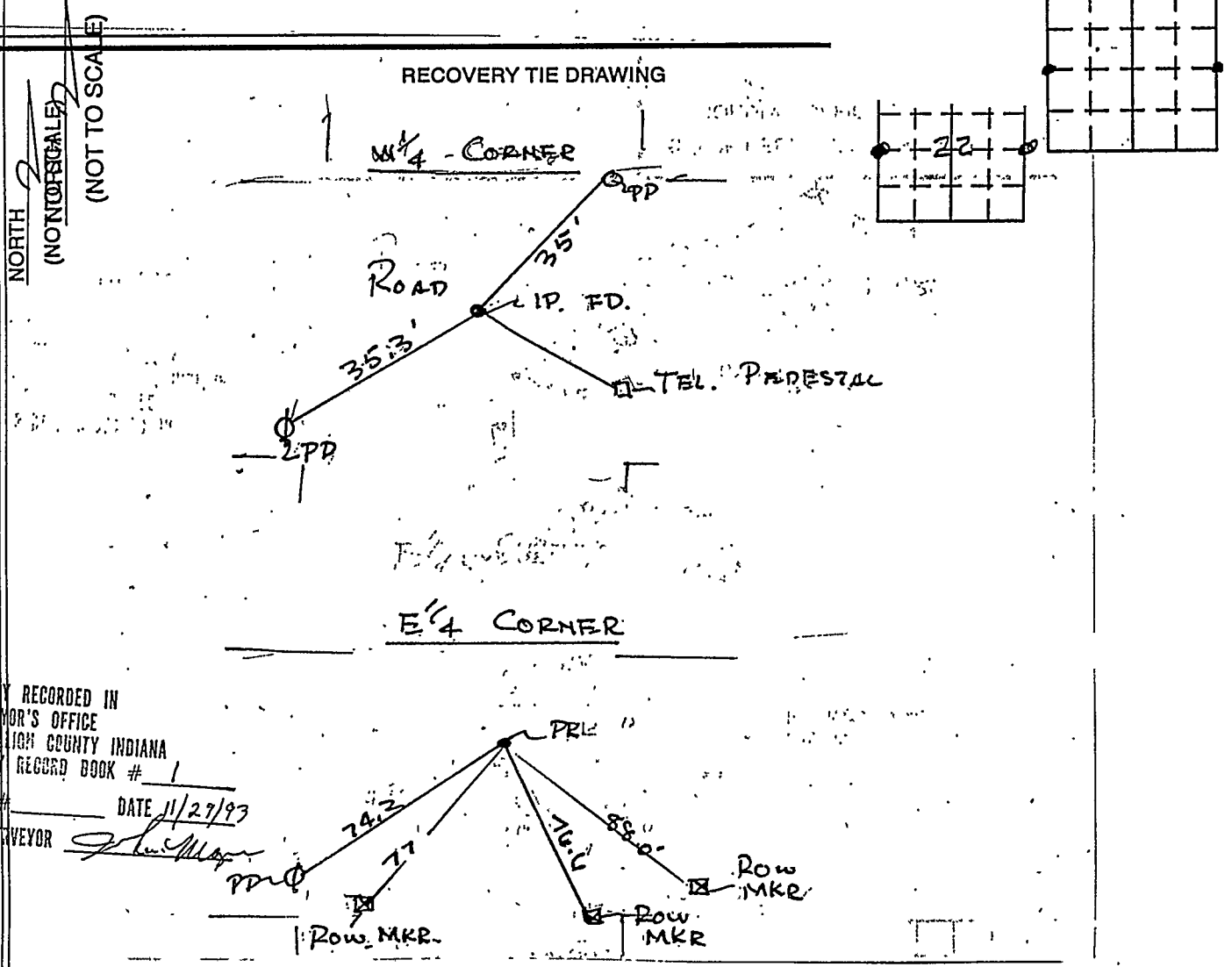


# VERMILLION COUNTY, IND. "MONUMENT RECORD" OF

LAND SURVEY MONUMENTS SITUATED IN SECTION 22, TOWNSHIP 15N,  
RANGE 10W, OF THE 2 PRINCIPAL MERIDIAN,  
COUNTY, INDIANA

MONUMENT DESCRIPTION AND REMARKS: 5/8" Iron Pin. W 1/4 corner + PK Nail in  
Pavement E 1/4 corner copied from Monument Record by  
Charles J. Becher 6/9/93 see: Field Survey Record Book #2

### RECOVERY TIE DRAWING



SURVEY RECORDED IN  
 TOWN CLERK'S OFFICE  
 VERMILLION COUNTY INDIANA  
 SURVEY RECORD BOOK # 1  
 DATE 11/27/93  
 SURVEYOR John May

STATE OF \_\_\_\_\_  
COUNTY OF \_\_\_\_\_ SS

I, \_\_\_\_\_, HEREBY  
CERTIFY THAT THIS DOCUMENT WAS PREPARED  
UNDER MY DIRECTION IN ACCORDANCE WITH  
IND. CODE 36-2-12-11-(D)-(3) AND THE ABOVE  
DATA IS GIVEN UNDER MY HAND AND SEAL

THIS \_\_\_\_\_ DAY OF \_\_\_\_\_, 19\_\_\_\_ A.D.

INDIANA REGISTERED LAND SURVEYOR NO. \_\_\_\_\_

OR \_\_\_\_\_  
UNITED STATES GOVERNMENT AGENCY

\_\_\_\_\_ TITLE

SPACE RESERVED FOR  
RECORDING OFFICER

DATE FILED \_\_\_\_\_

