

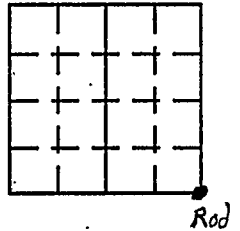
**VERMILLION COUNTY, IND.  
"MONUMENT RECORD"  
OF**

LAND SURVEY MONUMENTS SITUATED IN SECTION 27, TOWNSHIP 15N,  
RANGE 10W, OF THE 2 PRINCIPAL MERIDIAN,  
COUNTY, INDIANA

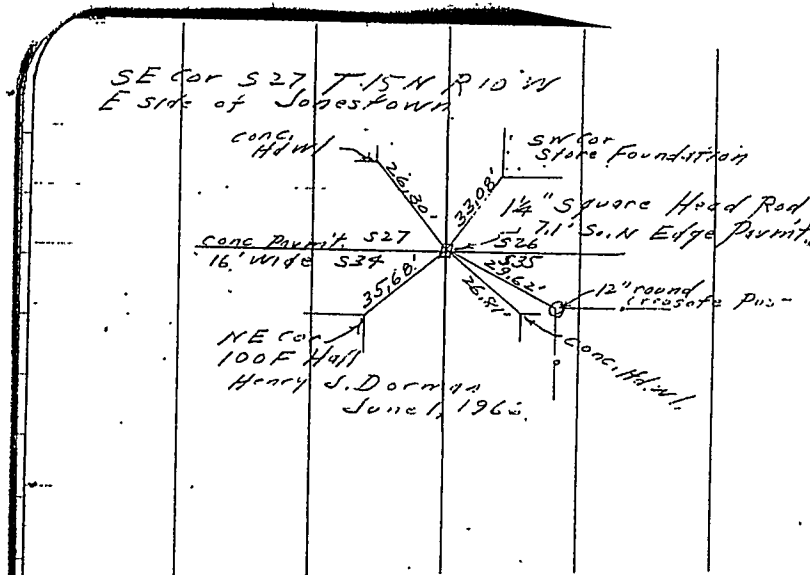
MONUMENT DESCRIPTION AND REMARKS: 1 1/4" Square Head Rod Found SE corner  
6/1/66 From: Brown Corner Stone Book By: Henry J. Dorman  
see: Gray File Cabinet Drawer #2

RECOVERY TIE DRAWING

NORTH 2  
(NOT TO SCALE)



NORTH 2  
(NOT TO SCALE)



STATE OF \_\_\_\_\_  
COUNTY OF \_\_\_\_\_ SS

SPACE RESERVED FOR  
RECORDING OFFICER

DATE FILED \_\_\_\_\_

I, \_\_\_\_\_, HEREBY  
CERTIFY THAT THIS DOCUMENT WAS PREPARED  
UNDER MY DIRECTION IN ACCORDANCE WITH  
IND. CODE 36-2-12-11-(D)-(3) AND THE ABOVE  
DATA IS GIVEN UNDER MY HAND AND SEAL

THIS \_\_\_\_\_ DAY OF \_\_\_\_\_, 19 \_\_\_\_\_ A.D.

INDIANA REGISTERED LAND SURVEYOR NO. \_\_\_\_\_

OR \_\_\_\_\_  
UNITED STATES GOVERNMENT AGENCY

TITLE \_\_\_\_\_

