

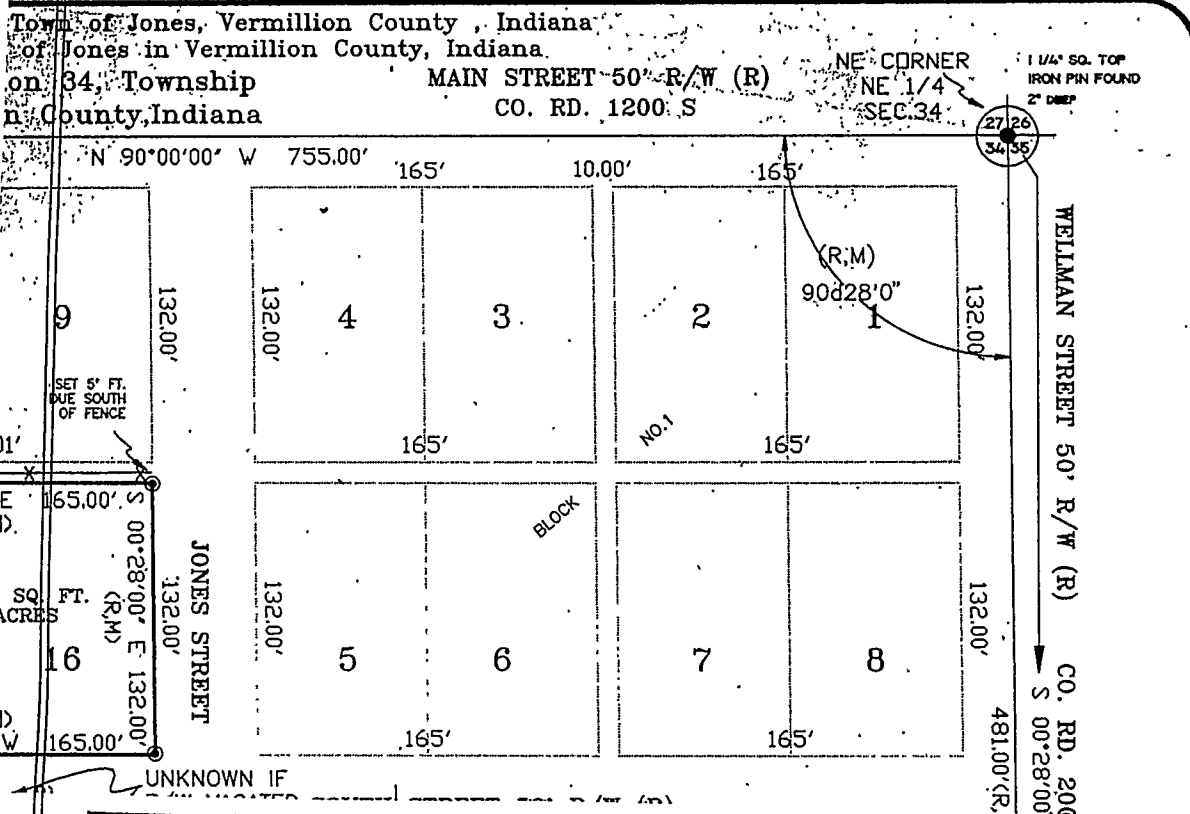
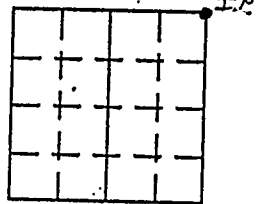
# VERMILLION COUNTY, IND. "MONUMENT RECORD" OF

LAND SURVEY MONUMENTS SITUATED IN SECTION 34, TOWNSHIP 15N  
 RANGE 10W, OF THE 2 PRINCIPAL MERIDIAN,  
 COUNTY, INDIANA

MONUMENT DESCRIPTION AND REMARKS: 1/4" Square Top Iron Pin Found NE corner  
David Lindsey By: Michael F. Feldbusch 6/12/96  
See: Plat Book 2, pg 21

## RECOVERY TIE DRAWING

NORTH  
(NOT TO SCALE)



STATE OF \_\_\_\_\_  
 COUNTY OF \_\_\_\_\_ SS

I, \_\_\_\_\_, HEREBY  
 CERTIFY THAT THIS DOCUMENT WAS PREPARED  
 UNDER MY DIRECTION IN ACCORDANCE WITH  
 IND. CODE 36-2-12-11-(D)-(3) AND THE ABOVE  
 DATA IS GIVEN UNDER MY HAND AND SEAL  
 THIS \_\_\_\_\_ DAY OF \_\_\_\_\_, 19\_\_\_\_ A.D.

INDIANA REGISTERED LAND SURVEYOR NO. \_\_\_\_\_

OR \_\_\_\_\_  
 UNITED STATES GOVERNMENT AGENCY

TITLE \_\_\_\_\_

SPACE RESERVED FOR  
 RECORDING OFFICER

DATE FILED \_\_\_\_\_

