

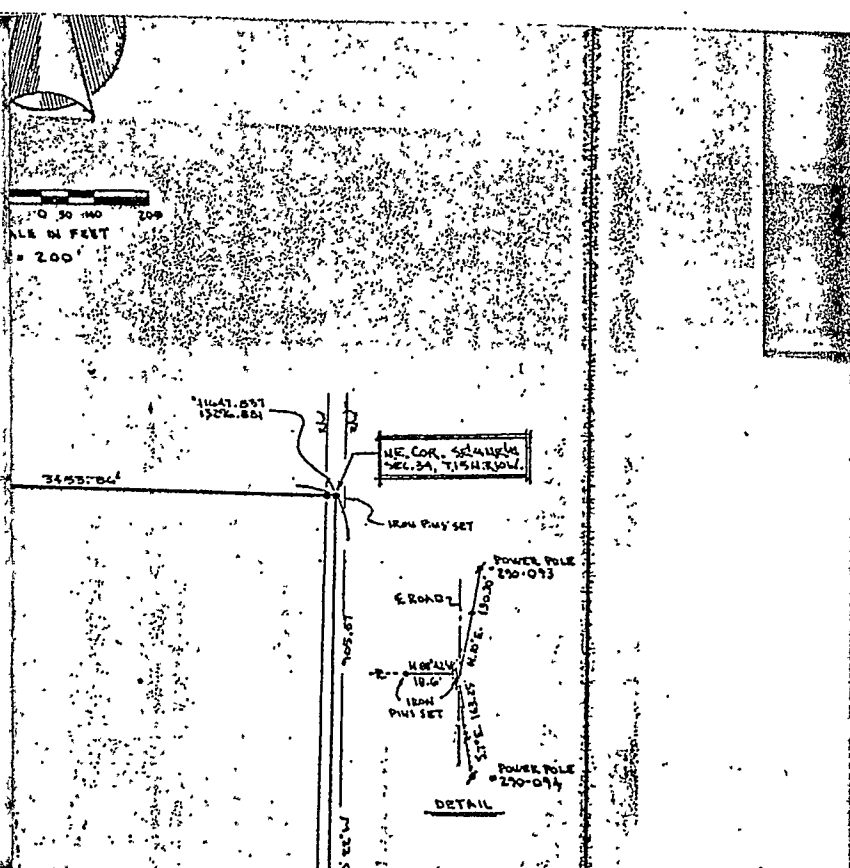
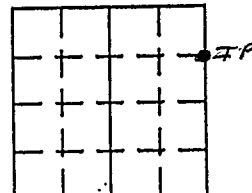
VERMILLION COUNTY, IND.  
"MONUMENT RECORD"  
OF

LAND SURVEY MONUMENTS SITUATED IN SECTION 34, TOWNSHIP 15N,  
RANGE 10W, OF THE 2 PRINCIPAL MERIDIAN,  
COUNTY, INDIANA

MONUMENT DESCRIPTION AND REMARKS: Iron Pin Set NE corner SE 1/4 NE 1/4  
Horse shoe Lake Preserve By: Alan Stanley 11/22/85  
see: Plat Book 1 pg 37

RECOVERY TIE DRAWING

NORTH 2  
(NOT TO SCALE)



STATE OF \_\_\_\_\_  
COUNTY OF \_\_\_\_\_ SS

I, \_\_\_\_\_, HEREBY  
CERTIFY THAT THIS DOCUMENT WAS PREPARED  
UNDER MY DIRECTION IN ACCORDANCE WITH  
IND. CODE 36-2-12-11-(D)-(3) AND THE ABOVE  
DATA IS GIVEN UNDER MY HAND AND SEAL  
THIS \_\_\_\_\_ DAY OF \_\_\_\_\_, 19 \_\_\_\_\_ A.D.

INDIANA REGISTERED LAND SURVEYOR NO. \_\_\_\_\_

OR \_\_\_\_\_  
UNITED STATES GOVERNMENT AGENCY

TITLE

SPACE RESERVED FOR  
RECORDING OFFICER

DATE FILED \_\_\_\_\_

