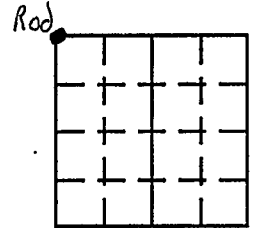


**VERMILLION COUNTY, IND.
"MONUMENT RECORD"
OF**

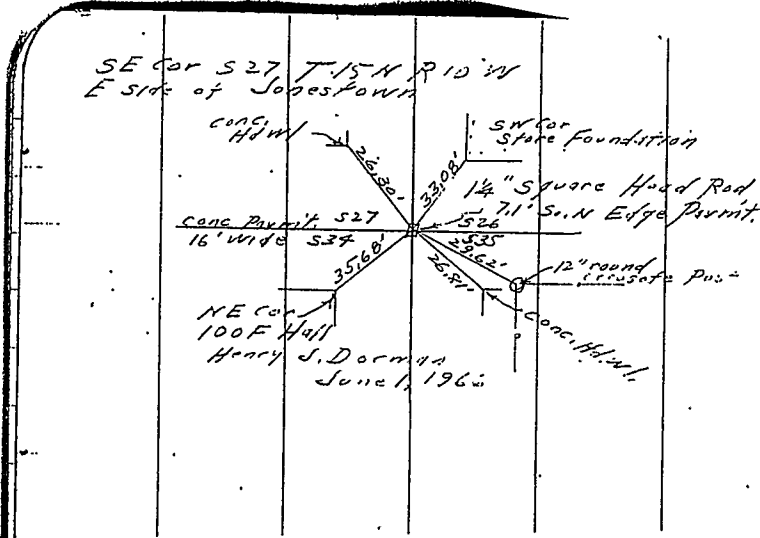
LAND SURVEY MONUMENTS SITUATED IN SECTION 35, TOWNSHIP 15N,
RANGE 10W, OF THE 2 PRINCIPAL MERIDIAN,
COUNTY, INDIANA

MONUMENT DESCRIPTION AND REMARKS: 1 1/4" Square Head Rod Found NW corner
6/1/66 From: Brown Corner Stone Book By: Henry J. Dorman
see: Gray File Cabinet Drawer #2

RECOVERY TIE DRAWING



NORTH 2 (NOT TO SCALE)
NORTH 2 (NOT TO SCALE)



STATE OF _____
COUNTY OF _____ SS

I, _____, HEREBY
CERTIFY THAT THIS DOCUMENT WAS PREPARED
UNDER MY DIRECTION IN ACCORDANCE WITH
IND. CODE 36-2-12-11-(D)-(3) AND THE ABOVE
DATA IS GIVEN UNDER MY HAND AND SEAL

THIS _____ DAY OF _____, 19____ A.D.

INDIANA REGISTERED LAND SURVEYOR NO. _____

OR _____
UNITED STATES GOVERNMENT AGENCY

_____ TITLE

SPACE RESERVED FOR
RECORDING OFFICER

DATE FILED _____

SEAL